



Unicorn Mineral Resources – AGM October 2021

www.unicornmineralresources.com



Disclaimer

This presentation does not constitute or form part of any offer for sale or solicitation of any offer to buy or subscribe for any securities in Unicorn Mineral Resources Ltd. nor shall it or any part of it form the basis of, or be relied on in connection with, or act as any inducement to enter into, any contract or commitment whatsoever. No reliance may be placed for any purpose whatsoever on the information or opinions contained in this presentation or on any other document or oral statement or on the completeness, accuracy or fairness of any such information and/or opinions. No undertaking, representation, warranty or other assurance, express or implied, is made or given by or on behalf of Unicorn Mineral Resources or any of their respective directors, employees or advisers, as to the accuracy or completeness of the information or opinions contained in this presentation, and (save in the case of fraud) no responsibility or liability is accepted by any of them for any such information or opinions or for any errors, omissions, misstatements, negligence or otherwise contained or referred to in this presentation. The contents of this presentation have not been approved by an authorized person within the meaning of the Financial Services and Markets Act 2000.

This presentation is not a prospectus within the meaning of the Prospectus (Directive 2003/71/EC) Regulations 2005 of Ireland and therefore has not been approved by the Irish Financial Services Regulatory Authorities being the competent authority for the purposes of Directive 2003/71/EC in Ireland. This presentation is not an offering document for the purposes of section 49 of the Investment Funds, Companies and Miscellaneous Provisions Act 2005 of Ireland.

This Presentation has been prepared by the Directors of Mineral Resources and is being issued solely to and directed at persons who have professional experience in matters relating to investments falling within Article 19(1)(a) of the Financial Services and Markets Act 2000 (Financial Promotion) Order 2005 (as amended the "FPO") or (b) high net worth entities and other persons to whom the presentation may otherwise lawfully be communicated, falling within Article 49(1)(a) of the FPO (all such persons together being referred to as "Relevant Persons"). In consideration of the receipt of the presentation each recipient warrants and represents that he or it is a person falling within that description. Delivery of this information to any other person or reproduction, in whole or in part, without the prior consent of Unicorn Mineral Resources is prohibited.

This information is being supplied to you, in whole or in part, for information purposes only and not for any other purpose. In particular, the distribution of this document in jurisdictions other than United Kingdom or Ireland may be restricted by law and persons into whose domain this document comes should inform themselves about, and observe, any such restrictions. Any failure to comply with these restrictions may constitute a violation of laws of any such other jurisdictions.

Unicorn Mineral Resources

Ireland – A First Class Global Zinc Destination

- ❖ The world's most fertile geological terrane (tonnes/km²)

- ❖ Large, high grade zinc / lead mines:

Navan	>125Mt (8% Zn / 2% Pb)
Lisheen	22Mt (14% Zn / 2% Pb)
Galmoy	9Mt (12% Zn / 2% Pb)
Silvermines	18Mt (5% Zn / 4% Pb)
Tynagh	11Mt (5% Zn / 6% Pb)

- ❖ The world's 10th largest Zinc producer

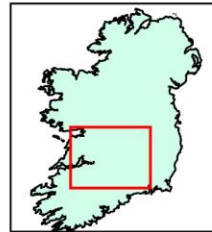
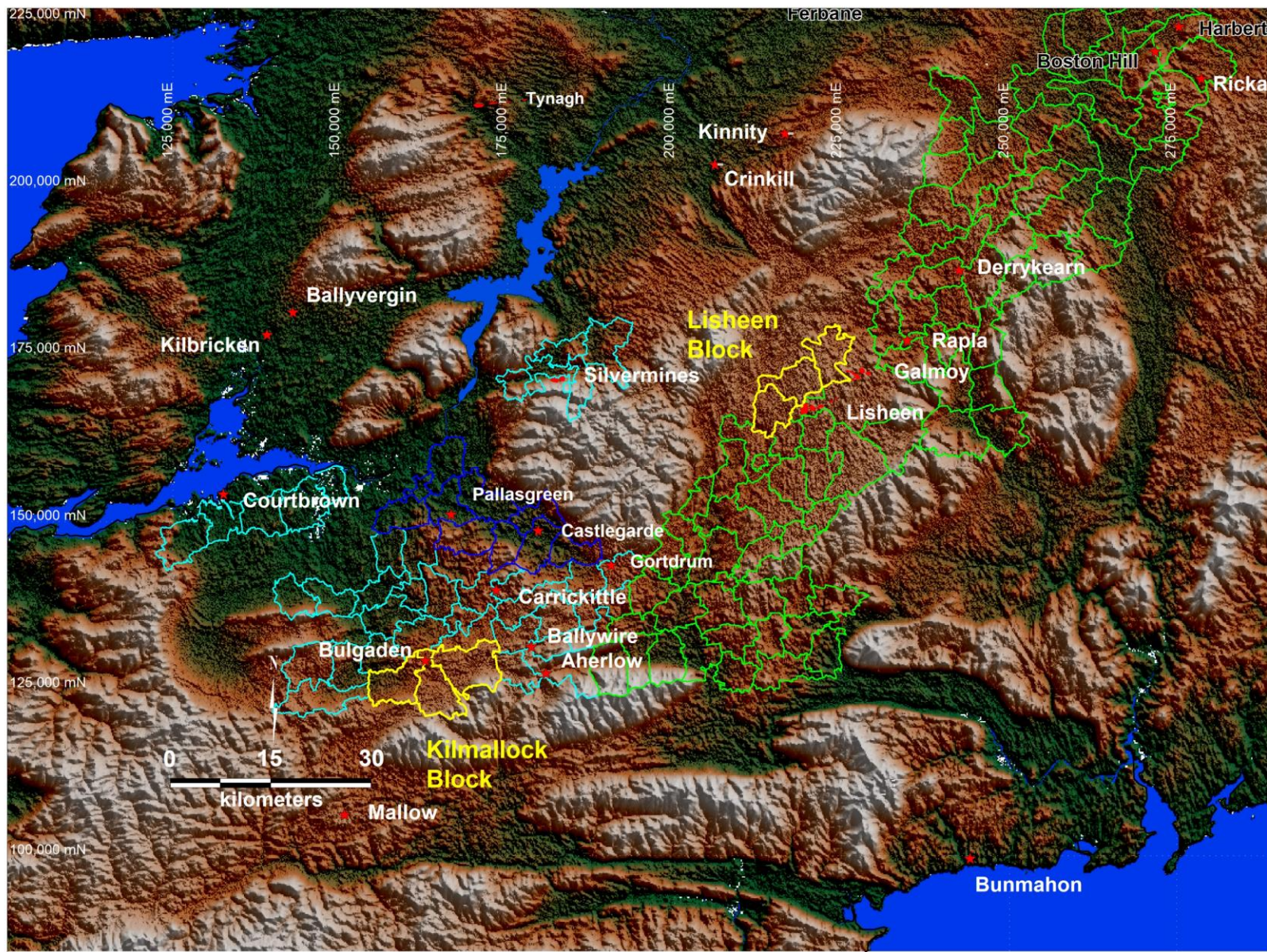
- ❖ Stable, mining friendly government with a low corporate tax regime and highly educated workforce

- ❖ Highly developed transport and power infrastructure, part of the European Union

- ❖ UMR ahead of the competition with respect to acquisition of high quality zinc prospects



Unicorn Mineral Resources



- Unicorn Licence
- Glencore - Pallas Green
- Zinc Mines of Ireland
- Group Eleven
- Mineral Deposit
- Mineral Occurrence

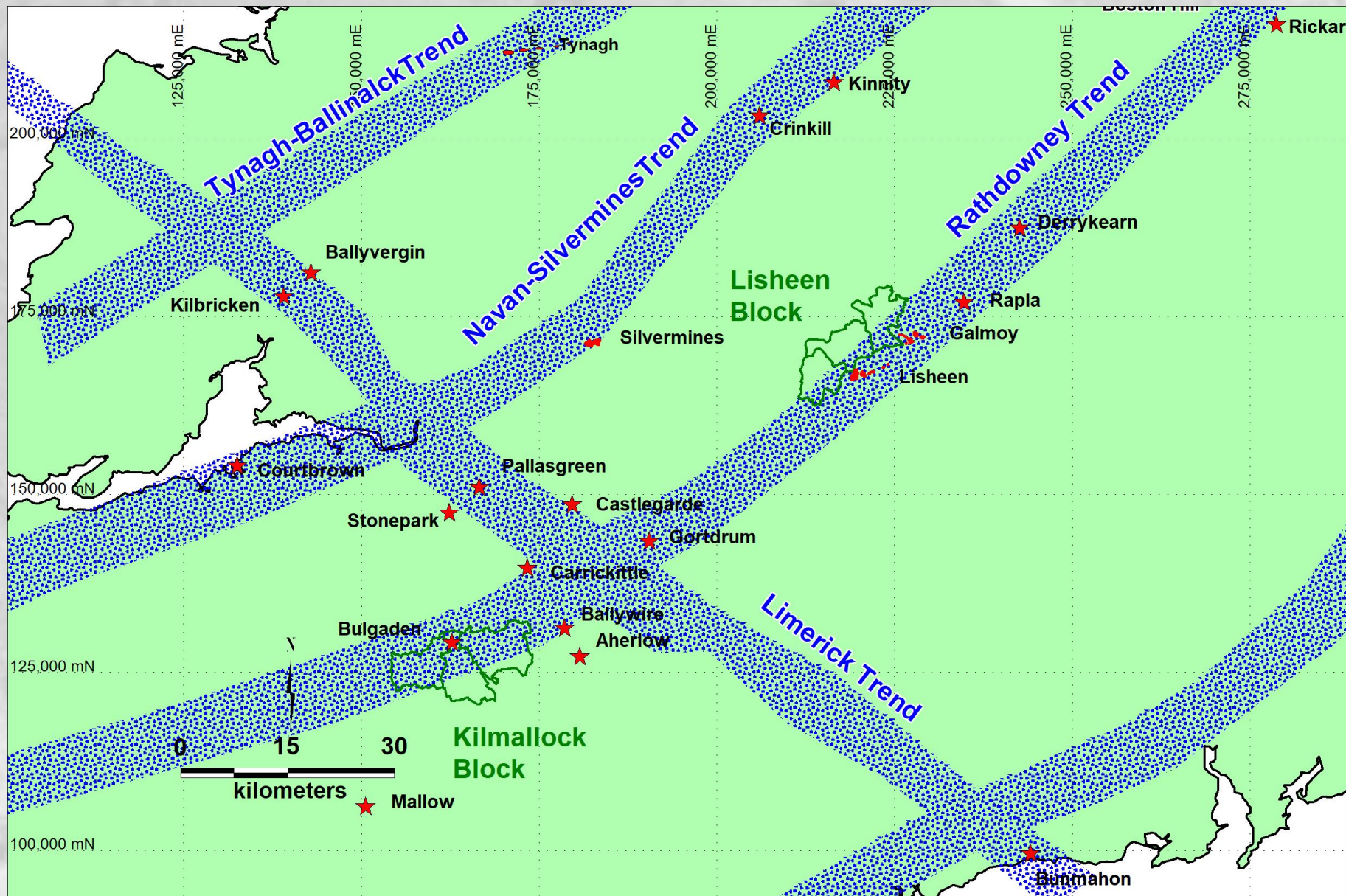
Economic Waulsortian Hosted Deposits

Lisheen
22.8Mt, 12% Zn / 2.1% Pb / 26g/t Ag
Galmoy
9.7Mt, 13.2% Zn / 3% Pb
Silvermines
17.7Mt, 6.4% Zn / 2.5% Pb / 23g/t Ag
Tynagh
9.2Mt, 5.0% Zn / 6.2% Pb / 0.5% Cu / 66g/t Ag
Gortdrum (Cu / Ag Deposit)
3.8Mt, 1.2% Cu / 25g/t Ag

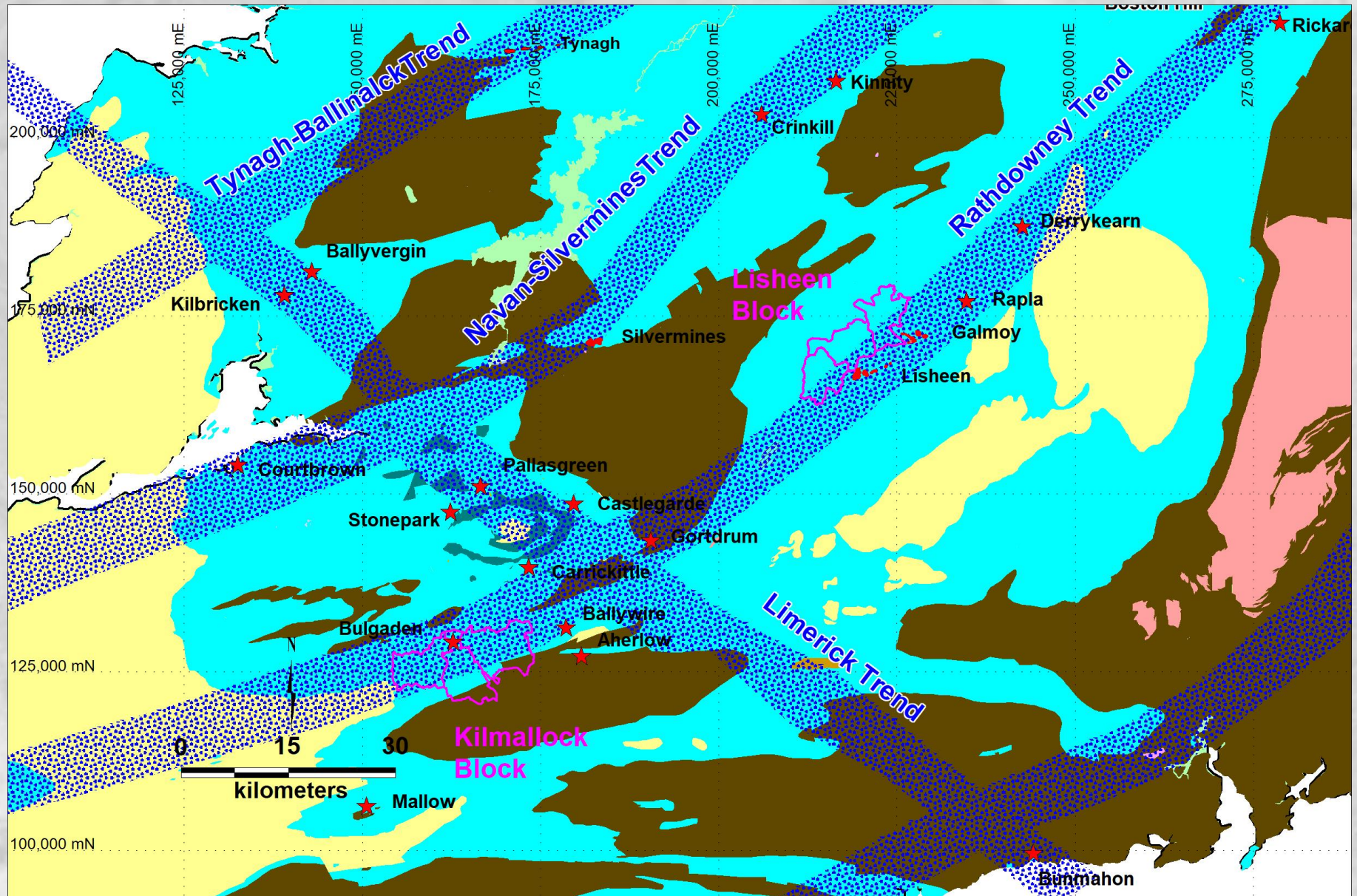


Ireland DTM Significant Mineral Occurrences	
Project UMR - Steel AG	Scale 1:50,000
Produced by: UMR	Date: 15 January 2008
Map AS DTM Ireland	MapScale: 1:50,000
Scale: 1:50,000	Projection: Irish Transverse Mercator

Unicorn Mineral Resources



Unicorn Mineral Resources



Unicorn Mineral Resources

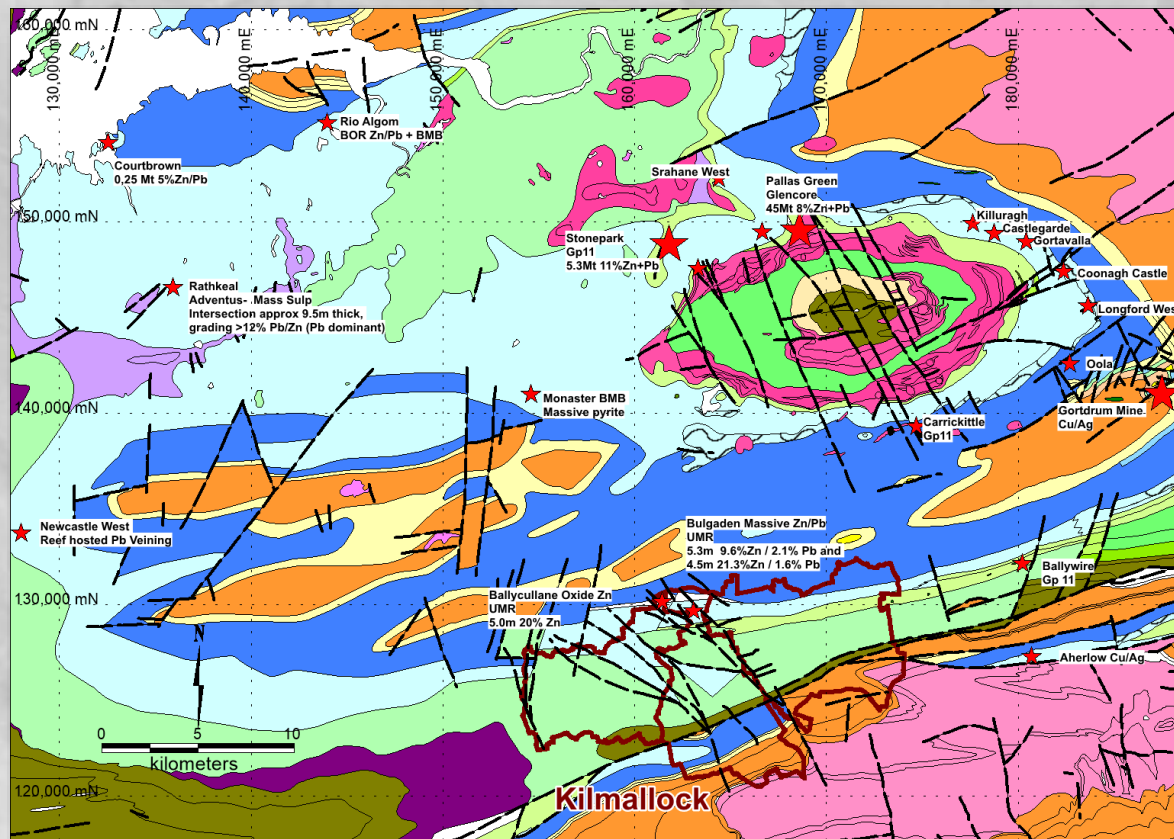
Kilmallock Block

Block	Three Contiguous Prospecting Licences, Surface Area 129.70km ²
Infrastructure	Well developed minor and regional class road network, south of the small town of Kilmallock. Land use is dominated by pasture land for grazing of sheep, cattle and horses.
Regional location	Located along the southwestern extension of the Rathdowney Mineralising Trend
Strategic Location	20km South of the Pallas Green Zn / Pb Deposit (The largest undeveloped deposit in Ireland) and 25km southwest from the Gortdrum Cu/Ag Deposit.
Target	Base of Waulsortian Reef - Carbonate Hosted, Zinc / Lead Massive Sulphides – relatively shallow c.180 – 300m.
Geological Setting	Southern side of the Limerick Basin in a region with an extensive, well developed, Waulsortian Reef host lithology. Structurally complex with a strong northwest-southeast and east-west grain, highly analogous to Pallas Green. Well developed basal Waulsortian Reef breccias, essential ground preparation for carbonate hosted massive sulphide mineralisation. Geology is well constrained by historic, shallow stratigraphic drilling
Significant Results	<p>Historic Stratigraphic Diamond Drilling has been used to develop a robust geological and structural model.</p> <p>Primary, base of Waulsortian Reef hosted, massive sulphide mineralisation was discovered by Boliden at Bulgaden. Best Results include:</p> <p>3249-14: 6.00m, grading 10.43% Zn / 1.78% Pb 3249-16: 12.00m, grading 4.29% Zn / 0.91% Pb 3249-18: 2.40m, grading 12.76% Zn / 2.0% Pb 3249-19: 5.30m, grading 9.55% Zn / 2.09% Pb and 3.80m grading 14.66% Zn / 4.82% Pb 3249-24: 10.50m, grading 8.34% Zn / 1.52% Pb (including 3.40m grading 20.62% Zn / 3.43% Pb) 3249-25: 4.50m grading 16.53% Zn / 1.25% Pb</p> <p>Results from An Airborne Geophysical Survey (Magnetics, EM and Radiometrics) has just been released in October 2019 and has enhanced the prospectivity of this licence area.</p>



Unicorn Mineral Resources

Kilmallock Block - Limerick Regional Setting

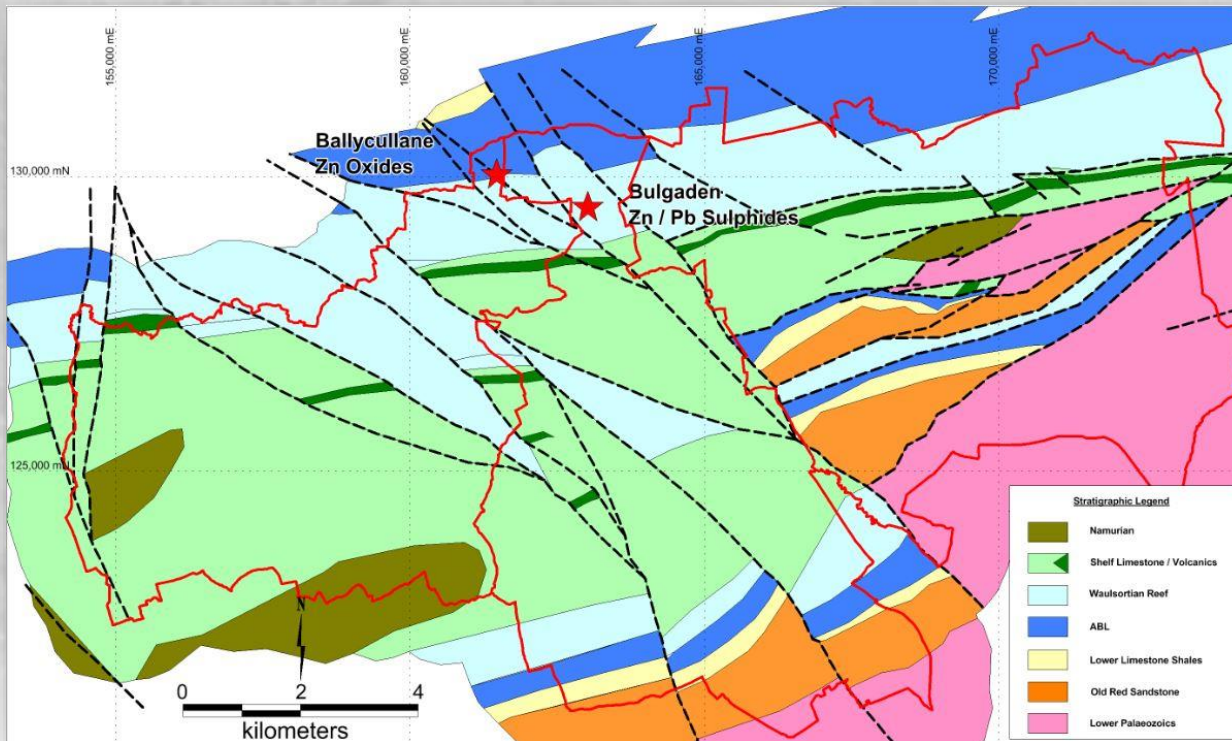


- ❖ Located along the extension of the Rathdowney Trend
- ❖ Extensive Waulsortian Reef development
- ❖ Limerick Province recently identified as an “Irish Type” target area
- ❖ Significant Zn/Pb deposits – Pallas Green and Stonepark
- ❖ Numerous small Zn/Pb deposits
- ❖ Major mineralised district in the early stages of exploration



Unicorn Mineral Resources

Kilmallock Block – Detailed Geology



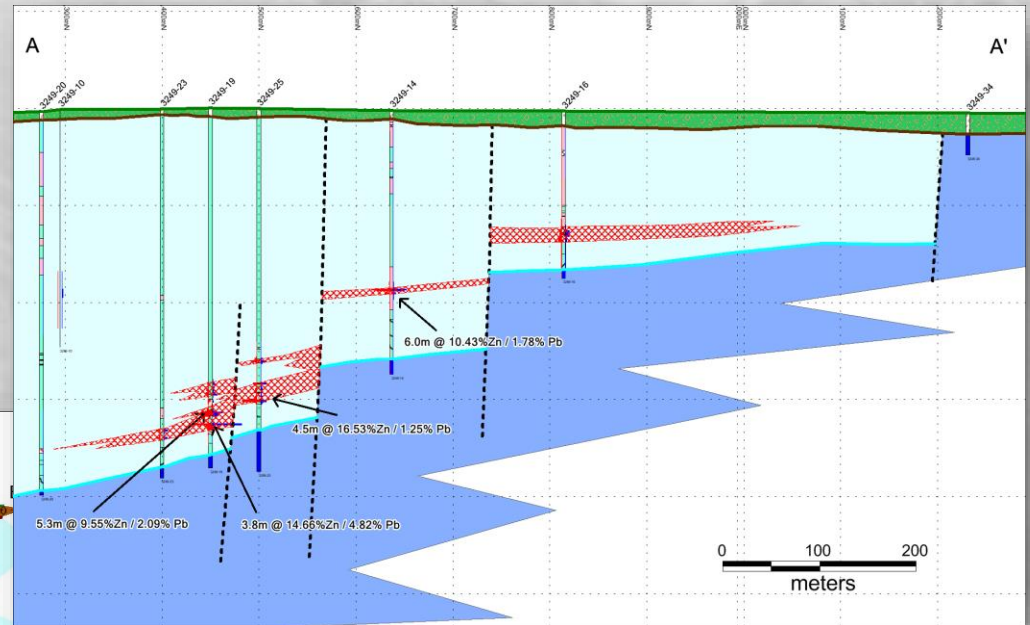
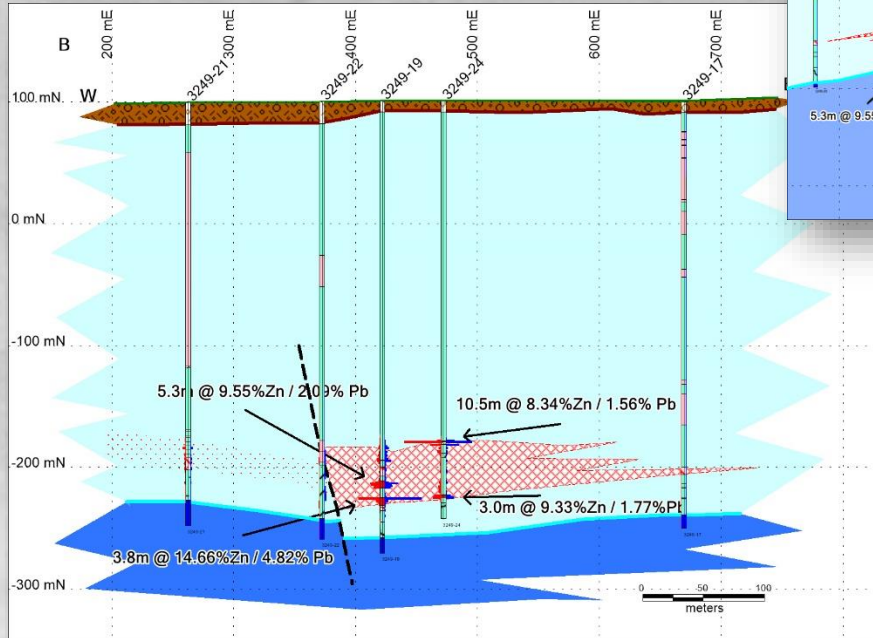
- ❖ High grade Zn / Pb mineralisation at Ballycullane and Bulgaden.
- ❖ Mineralisation is open and has not been defined or delineated.
- ❖ The targets are shallow (<300m).
- ❖ Extensive development of the untested target horizon.
- ❖ Well developed northwest – southeast faulting, analogous to Pallas Green.



Unicorn Mineral Resources

Kilmallock Block

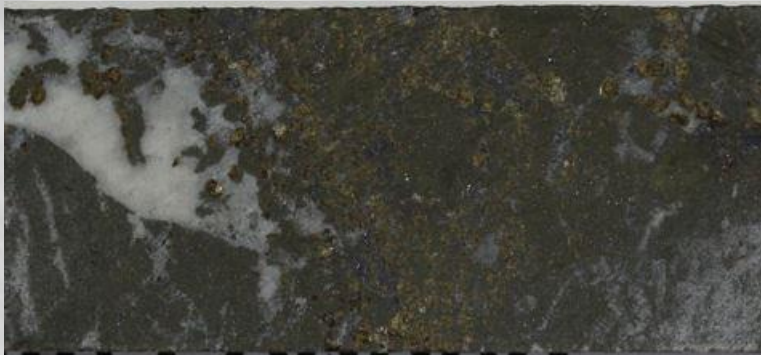
Sections A – A' and B – B'



- ❖ Stratiform / Stratabound mineralisation
- ❖ Structural control
- ❖ Carbonate breccia hosted
- ❖ Target depth 180 – 300m.

Unicorn Mineral Resources

UMKK001 - Mineralisation



289.1m 11.2% Zn / 1.71% Pb / 7.53g/t Ag



298.1m 6.51% Zn / 1.64% Pb / 10.26g/t Ag



302.2m 7.19% Zn / 0.05% Pb / 10.01g/t Ag



Unicorn Mineral Resources

Kilmallock Block – Intersections

Ballycullane (Oxide Zone)

BC3 1.5m grading 13% Zn
BC4 5.0m grading 20% Zn
BC5 3.0m grading 11% Zn
BC6 3.0m grading 13.% Zn

Bulgaden (Sulphide Zone)

3249-14 6.0m grading 10.43% Zn / 1.78% Pb
3249-16 12.0m grading 4.29% Zn / 0.91% Pb / 23.55g/t Ag
3249-18 2.4m grading 12.76% Zn / 2.0% Pb / 34.4g/t Ag
3249-19 5.3m grading 9.55% Zn / 2.09% Pb / 27.26g/t Ag
3249-19 3.8m grading 14.66% Zn / 4.82% Pb / 133.79g/t Ag
3249-24 10.5m grading 8.34% Zn / 1.52% Pb / 61.98g/t Ag
including 1.2m grading 48.94% Zn / 7.23% Pb / 204g/t Ag
3249-25 4.5m grading 16.53% Zn / 1.25% Pb / 57.12g/t Ag
UMKK001 5.75m grading 3.28% Zn / 0.61% Pb / 7.27g/t Ag
UMKK001 7.6m grading 2.48% Zn / 0.25% P / 8.85g/t Ag



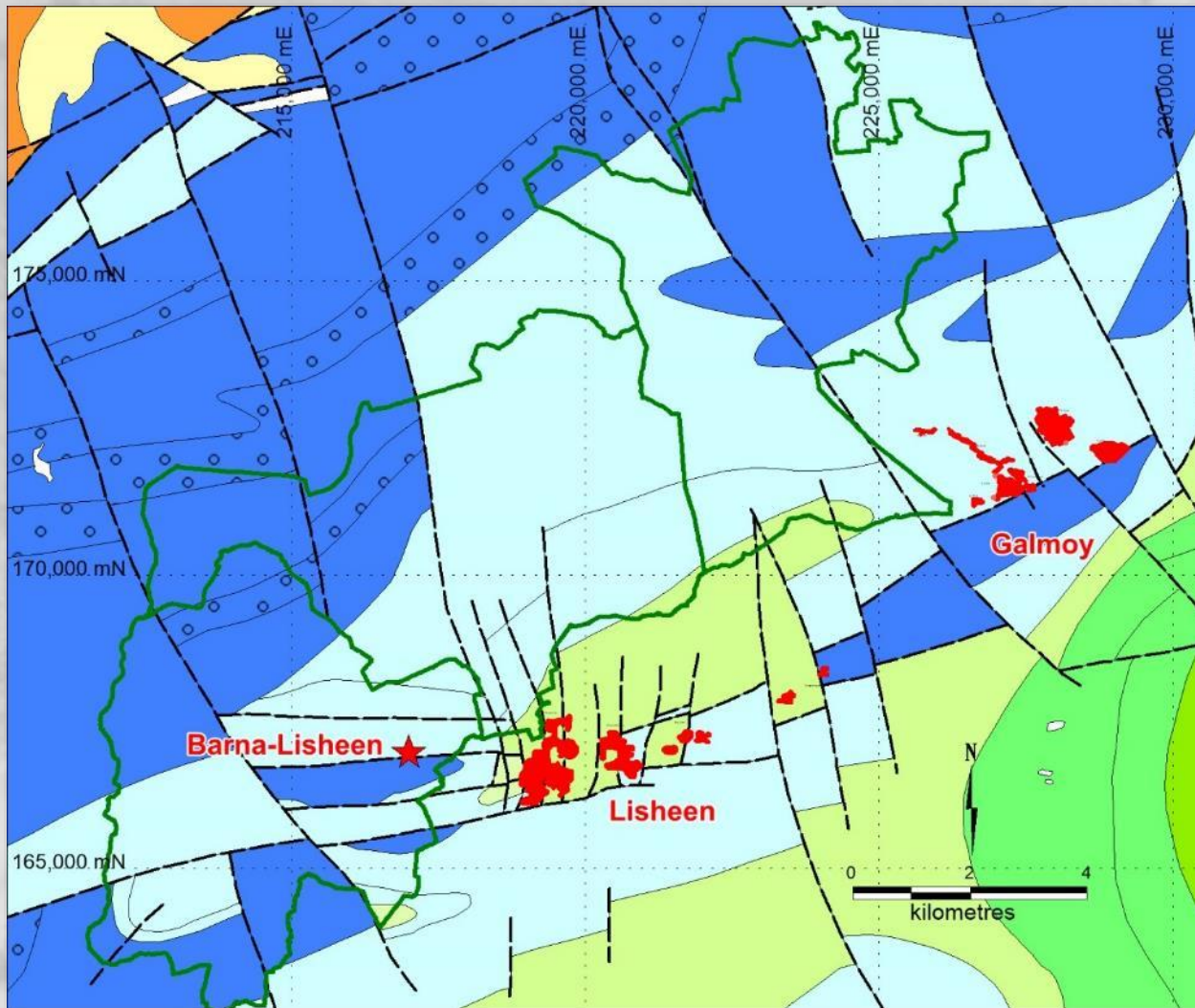
Unicorn Mineral Resources

Lisheen Block

Block	Three contiguous Prospecting Licences, Surface Area 102.24km ²
Infrastructure	Well developed minor and regional class road network, south of the small town of Kilcormick. Land use is dominated by pasture land for grazing of sheep, cattle with minor raised bog.
Regional location	Located along the world famous, highly prospective Rathdowney Mineralising Trend.
Strategic Location	Adjacent to the Lisheen and Galmoy Zn / Pb Deposits
Target	Base of Waulsortian Reef - Carbonate Hosted, Zinc / Lead Massive Sulphides
Geological Setting	Located along the Rathdowney Trend immediately north of the Lisheen and Galmoy deposits occupying a strategic location around both of these deposits. The licences are underlain by well developed and regional dolomitised Waulsortian Reef that dips gently to the south. The area is cross-cut by Caledonian faults orientated ENE-WSW and NW-SE. Extensions of the main controlling fault systems at both the Lisheen and Galmoy deposits can be traced onto these licences. Historic exploration was focused upon the immediate mine areas at both deposits, there is significant opportunity to explore for additional deposits in the 5 – 10Mt range and the imminent reopening of the Galmoy mine mean that there is potential to develop a mining centre being fed by numerous smaller deposits.
Significant Results	<p>Recent Mining has taken place immediately adjacent to these licences.</p> <p>Lisheen : 22Mt @12% Zn / 2% Pb - Located immediately to the south of the Block</p> <p>Galmoy : 9Mt @13.5 Zn / 2% Pb - Located immediately to the east of the Block</p> <p>Barna Lisheen – significant mineral occurrence located on the licence Block c.1km northwest of the Lisheen Main Zone Lens. Base of Reef breccia hosted massive sulphides dominated by sphalerite and galena – highly prospective and undeveloped. The presence of Barna Lisheen supports the potential for other satellite deposits across this belt. Drill hole No. 20 had an intersection of 6.8m @ 7.16% Zn / 0.17%Pb Inc. 2.1m @ 13%Zn</p> <p>Early stage evaluation must be completed ASAP to develop an exploration strategy for the block</p>

Unicorn Mineral Resources

Lisheen Block



- ❖ Located along the Rathdowney Trend
- ❖ Well developed Waulsortian Reef with depositional / structurally controlled facies variation
- ❖ High Grade Irish Type massive sulphide occurrences
- ❖ Region is not fully explored and opportunities exist to discover additional massive sulphide deposits



Unicorn Mineral Resources

UMR Summary

- ❖ **Commodities have been rising steadily, demand for Zinc is exceeding supply**
- ❖ **Ireland is the world's leading zinc province, in terms of tonnes / km².**
- ❖ **UMR has refocused it's position with 6 Prospecting Licences divided into 2 contiguous blocks**
- ❖ **All of the licence blocks are positioned at highly prospective locations along regional mineralising trends close to known economic deposits.**
- ❖ **Highly significant zinc and lead sulphide mineralisation and alteration has been discovered on both licence blocks.**
- ❖ **Drill ready targets in areas with prospective geology and relatively shallow depths.**

