



Unicorn Mineral Resources Project Review March 2020

www.unicornmineralresources.com



Disclaimer

This presentation does not constitute or form part of any offer for sale or solicitation of any offer to buy or subscribe for any securities in Unicorn Mineral Resources Ltd. nor shall it or any part of it form the basis of, or be relied on in connection with, or act as any inducement to enter into, any contract or commitment whatsoever. No reliance may be placed for any purpose whatsoever on the information or opinions contained in this presentation or on any other document or oral statement or on the completeness, accuracy or fairness of any such information and/or opinions. No undertaking, representation, warranty or other assurance, express or implied, is made or given by or on behalf of Unicorn Mineral Resources or any of their respective directors, employees or advisers, as to the accuracy or completeness of the information or opinions contained in this presentation, and (save in the case of fraud) no responsibility or liability is accepted by any of them for any such information or opinions or for any errors, omissions, misstatements, negligence or otherwise contained or referred to in this presentation. The contents of this presentation have not been approved by an authorized person within the meaning of the Financial Services and Markets Act 2000.

This presentation is not a prospectus within the meaning of the Prospectus (Directive 2003/71/EC) Regulations 2005 of Ireland and therefore has not been approved by the Irish Financial Services Regulatory Authorities being the competent authority for the purposes of Directive 2003/71/EC in Ireland. This presentation is not an offering document for the purposes of section 49 of the Investment Funds, Companies and Miscellaneous Provisions Act 2005 of Ireland.

This Presentation has been prepared by the Directors of Mineral Resources and is being issued solely to and directed at persons who have professional experience in matters relating to investments falling within Article 19(1)(a) of the Financial Services and Markets Act 2000 (Financial Promotion) Order 2005 (as amended the "FPO") or (b) high net worth entities and other persons to whom the presentation may otherwise lawfully be communicated, falling within Article 49(1)(a) of the FPO (all such persons together being referred to as "Relevant Persons"). In consideration of the receipt of the presentation each recipient warrants and represents that he or it is a person falling within that description. Delivery of this information to any other person or reproduction, in whole or in part, without the prior consent of Unicorn Mineral Resources is prohibited.

This information is being supplied to you, in whole or in part, for information purposes only and not for any other purpose. In particular, the distribution of this document in jurisdictions other than United Kingdom or Ireland may be restricted by law and persons into whose domain this document comes should inform themselves about, and observe, any such restrictions. Any failure to comply with these restrictions may constitute a violation of laws of any such other jurisdictions.



Unicorn Mineral Resources

Ireland – A First Class Global Zinc Destination

- ❖ The world's most fertile geological terrain (tonnes/km²)

- ❖ Large, high grade zinc / lead mines:

Navan	>125Mt (8% Zn / 2% Pb)
Lisheen	22Mt (14% Zn / 2% Pb)
Galmoy	9Mt (12% Zn / 2% Pb)
Silvermines	18Mt (5% Zn / 4% Pb)
Tynagh	11Mt (5% Zn / 6% Pb)

- ❖ The world's 10th largest Zinc producer

- ❖ Stable, mining friendly government with a low corporate tax regime and highly educated workforce

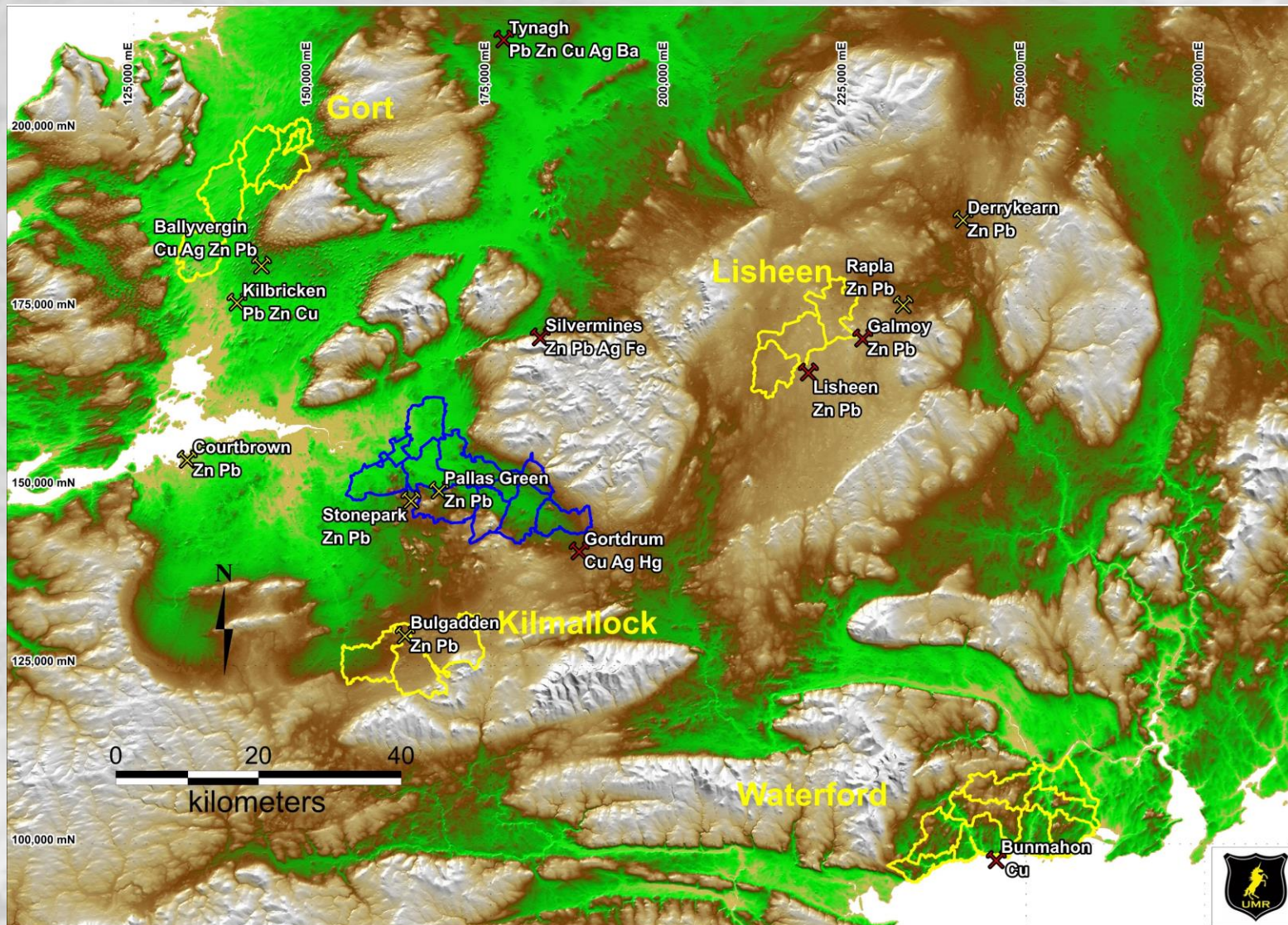
- ❖ Highly developed transport and power infrastructure, part of the European Union

- ❖ UMR ahead of the competition with respect to acquisition of high quality zinc prospects



Unicorn Mineral Resources

Ground Position



- Unicorn Licence
- Glencore Licence
- Mineral Deposit
- Mineral Occurrence

Economic Waulsortian Hosted Deposits

Lisheen
22.8Mt 12% Zn / 2.1% Pb
/ 26 g/t Ag

Galmoy
9.7Mt 13.2% Zn / 3% Pb

Silvermines
17.7Mt 6.4% Zn / 2.5% Pb
/ 23 g/t Ag

Tynagh
9.2Mt 5.0% Zn / 6.2% Pb
/ 0.5% Cu / 66 g/t Ag

Gortdrum (Cu / Ag Deposit)
3.8Mt 1.2% Cu / 25 g/t Ag

Unicorn Mineral Resources
Ireland - Ground Position



Unicorn Mineral Resources

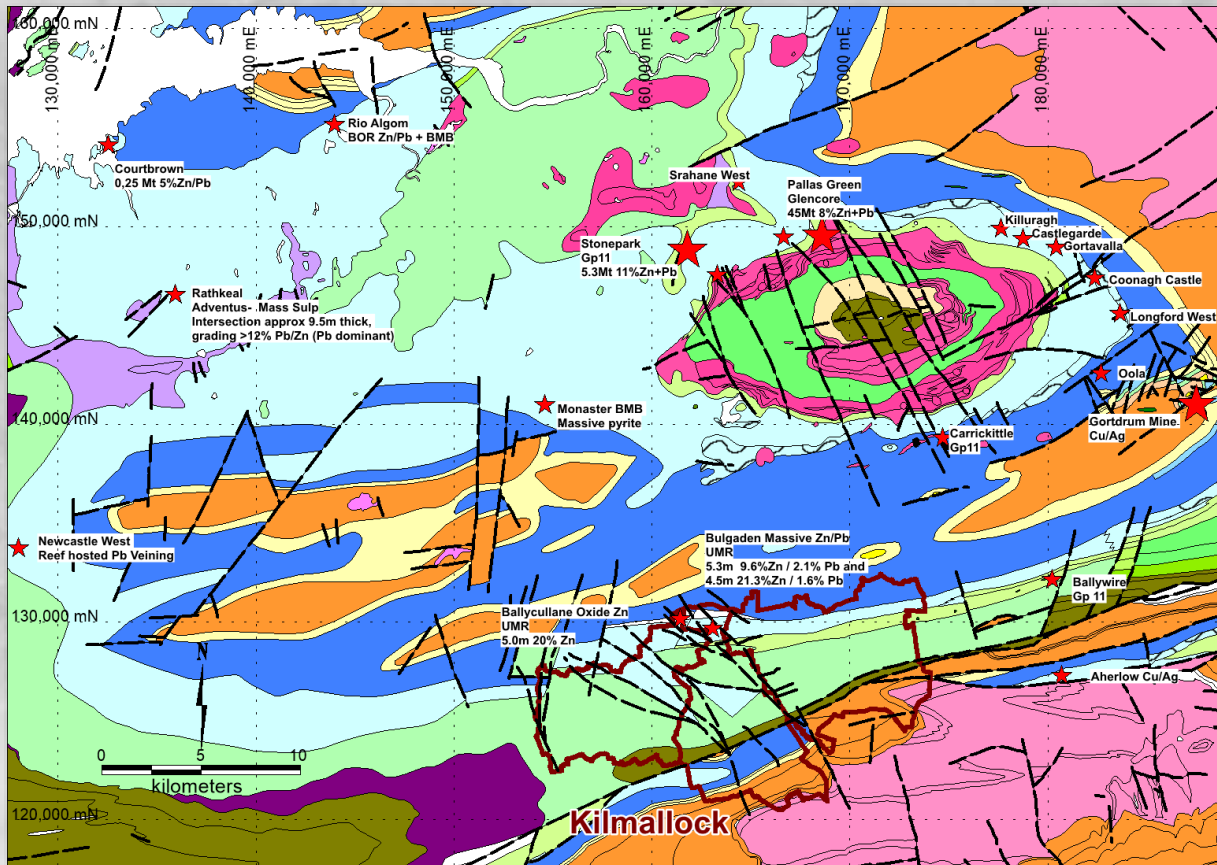
Kilmallock Block

Block	Three Contiguous Prospecting Licences, Surface Area 129.70km ²
Infrastructure	Well developed minor and regional class road network, south of the small town of Kilmallock. Land use is dominated by pasture land for grazing of sheep, cattle and horses.
Regional location	Located along the southwestern extension of the Rathdowney Mineralising Trend
Strategic Location	20km South of the Pallas Green Zn / Pb Deposit (The largest undeveloped deposit in Ireland) and 25km southwest from the Gortdrum Cu/Ag Deposit.
Target	Base of Waulsortian Reef - Carbonate Hosted, Zinc / Lead Massive Sulphides – relatively shallow c.180 – 300m.
Geological Setting	Southern side of the Limerick Basin in a region with an extensive, well developed, Waulsortian Reef host lithology. Structurally complex with a strong northwest-southeast and east-west grain, highly analogous to Pallas Green. Well developed basal Waulsortian Reef breccias, essential ground preparation for carbonate hosted massive sulphide mineralisation. Geology is well constrained by historic, shallow stratigraphic drilling
Significant Results	<p>Historic Stratigraphic Diamond Drilling has been used to develop a robust geological and structural model.</p> <p>Primary, base of Waulsortian Reef hosted, massive sulphide mineralisation was discovered by Boliden at Bulgaden. Best Results include:</p> <p>3249-14: 6.00m, grading 10.43% Zn / 1.78% Pb 3249-16: 12.00m, grading 4.29% Zn / 0.91% Pb 3249-18: 2.40m, grading 12.76% Zn / 2.0% Pb 3249-19: 5.30m, grading 9.55% Zn / 2.09% Pb and 3.80m grading 14.66% Zn / 4.82% Pb 3249-24: 10.50m, grading 8.34% Zn / 1.52% Pb (including 3.40m grading 20.62% Zn / 3.43% Pb) 3249-25: 4.50m grading 16.53% Zn / 1.25% Pb</p> <p>Results from An Airborne Geophysical Survey (Magnetics, EM and Radiometrics) has just been released in October 2019 and has enhanced the prospectivity of this licence area.</p>



Unicorn Mineral Resources

Kilmallock Block - Limerick Regional Setting

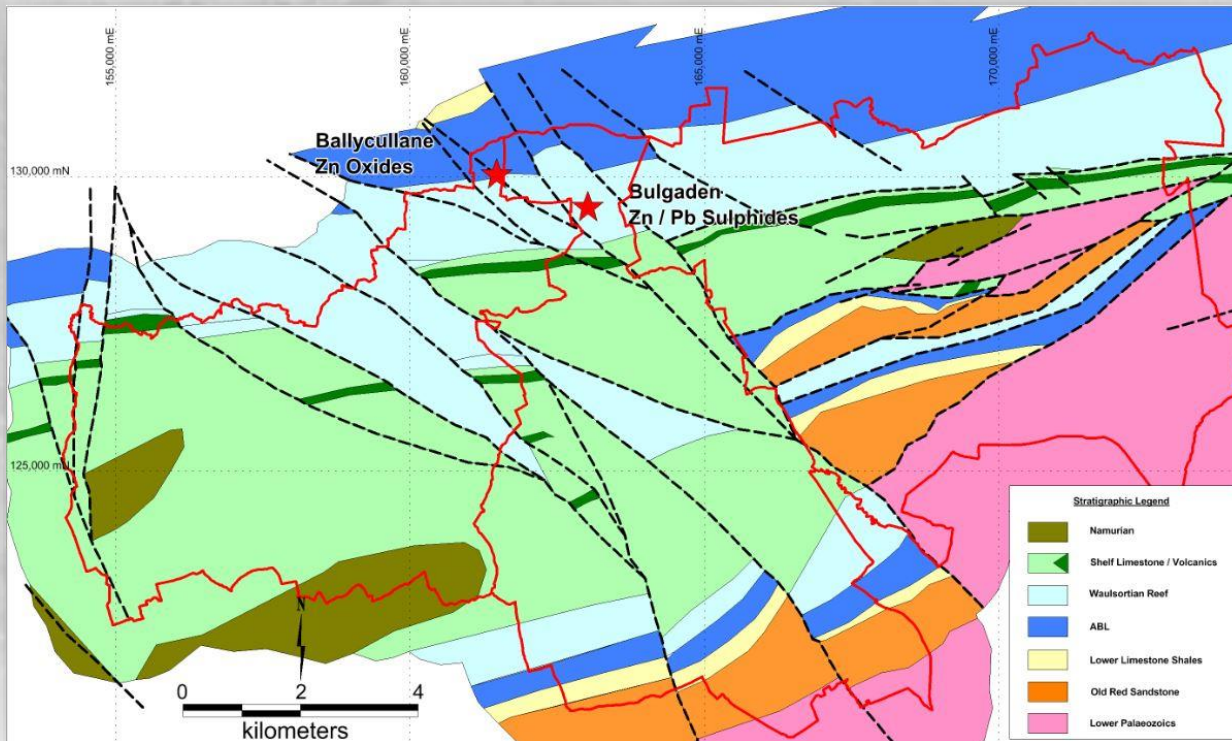


- ❖ Located along the extension of the Rathdowney Trend
- ❖ Extensive Waulsortian Reef development
- ❖ Limerick Province recently identified as an “Irish Type” target area
- ❖ Significant Zn/Pb deposits – Pallas Green and Stonepark
- ❖ Numerous small Zn/Pb deposits
- ❖ Major mineralised district in the early stages of exploration



Unicorn Mineral Resources

Kilmallock Block – Detailed Geology

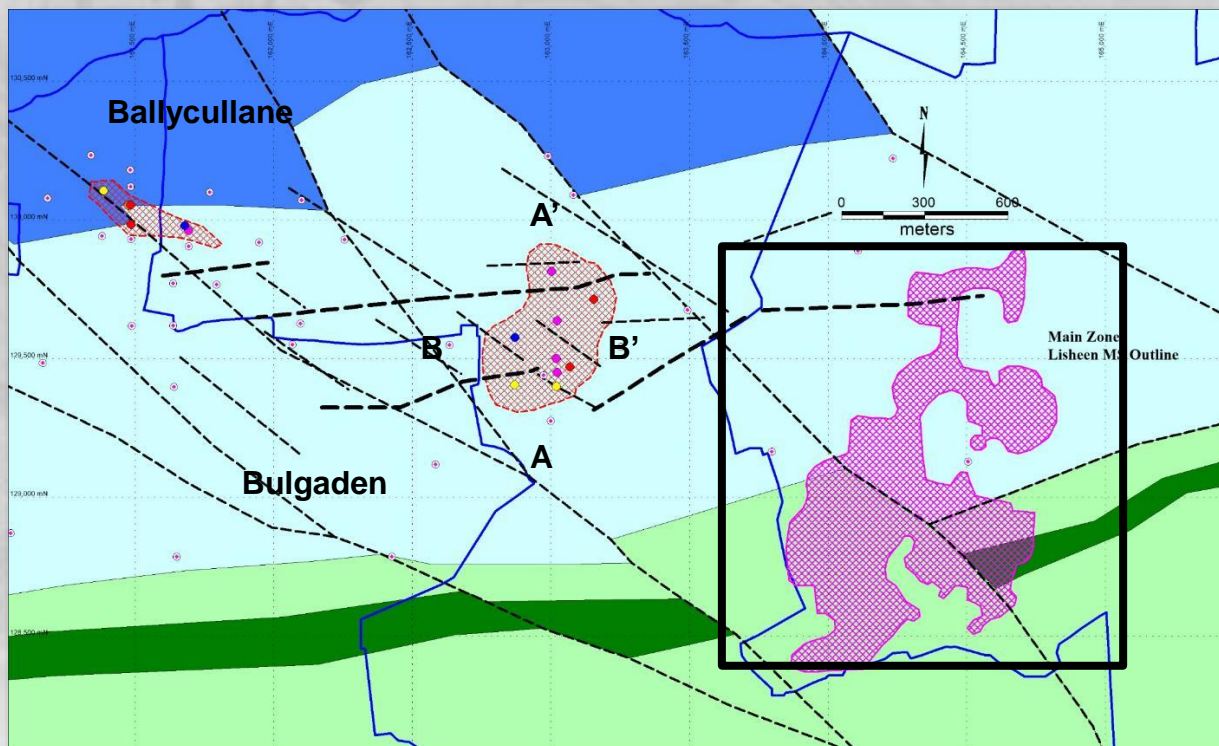


- ❖ High grade Zn / Pb mineralisation at Ballycullane and Bulgaden.
- ❖ Mineralisation is open and has not been defined or delineated.
- ❖ The targets are shallow (<300m).
- ❖ Extensive development of the untested target horizon.
- ❖ Well developed northwest – southeast faulting, analogous to Pallas Green.



Unicorn Mineral Resources

Kilmallock Target Size Comparison 12Mt



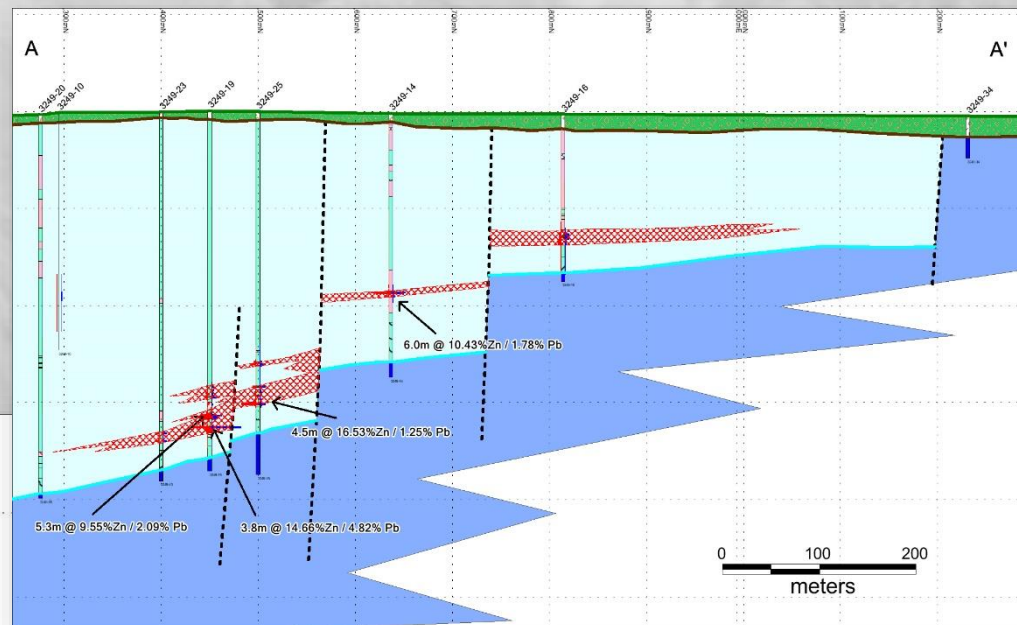
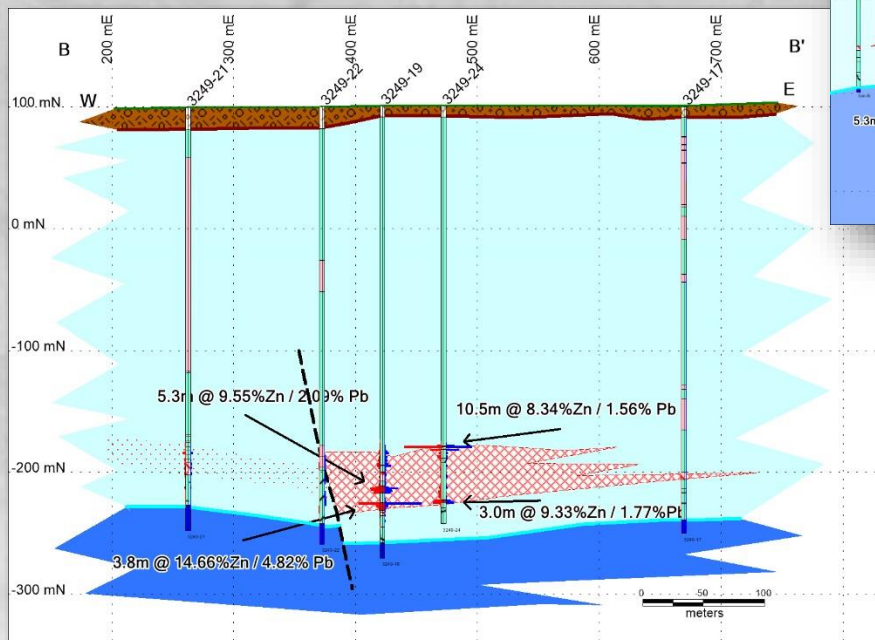
- ❖ Shows the footprint of the massive sulphides defined to date.
- ❖ Footprint of the Lisheen Main Zone (12Mt) included for scale / comparison
- ❖ Mineralisation is analogous to Lisheen - stratiform, stratabound and flat lying.
- ❖ Ballycullane Zone – Oxide deposit
- ❖ Bulgaden - Primary sulphides. Not delineated or constrained – open in all directions



Unicorn Mineral Resources

Kilmallock Block

Sections A – A' and B – B'



- ❖ Stratiform / Stratabound mineralisation
- ❖ Structural control
- ❖ Carbonate breccia hosted
- ❖ Target depth 180 – 300m.



Unicorn Mineral Resources

Kilmallock Block – Intersections

Ballycullane (Oxide Zone)

BC3 1.5m grading 13% Zn
BC4 5.0m grading 20% Zn
BC5 3.0m grading 11% Zn
BC6 3.0m grading 13.% Zn

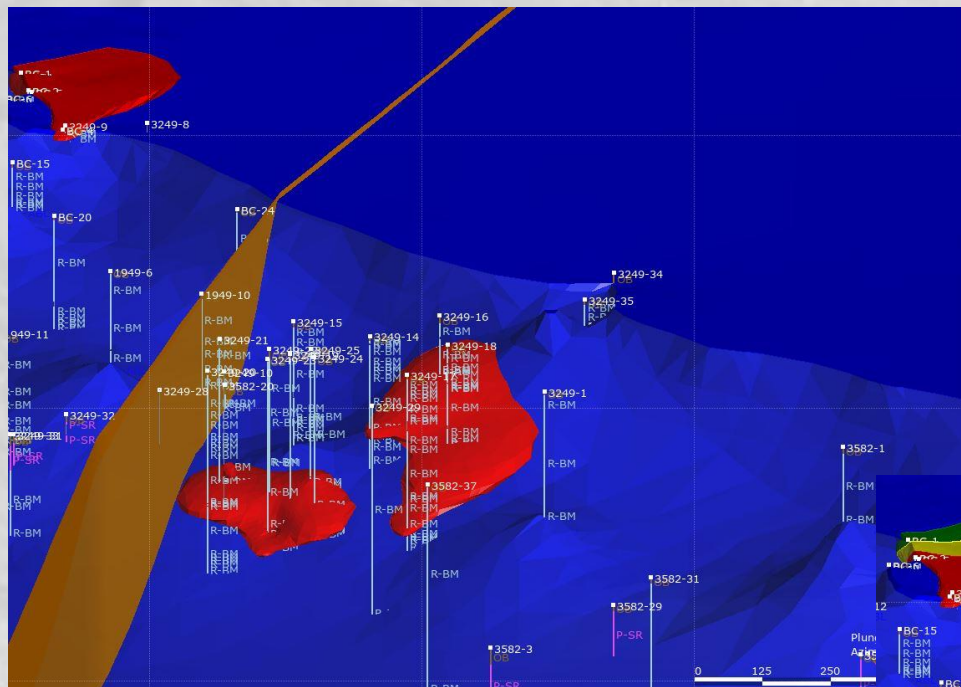
Bulgaden (Sulphide Zone)

3249-14 6.0m grading 10.43% Zn / 1.78% Pb
3249-16 12.0m grading 4.29% Zn / 0.91% Pb / 23.55g/t Ag
3249-18 2.4m grading 12.76% Zn / 2.0% Pb / 34.4g/t Ag
3249-19 5.3m grading 9.55% Zn / 2.09% Pb / 27.26g/t Ag
3249-19 3.8m grading 14.66% Zn / 4.82% Pb / 133.79g/t Ag
3249-24 10.5m grading 8.34% Zn / 1.52% Pb / 61.98g/t Ag
including 1.2m grading 48.94% Zn / 7.23% Pb / 204g/t Ag
3249-25 4.5m grading 16.53% Zn / 1.25% Pb / 57.12g/t Ag

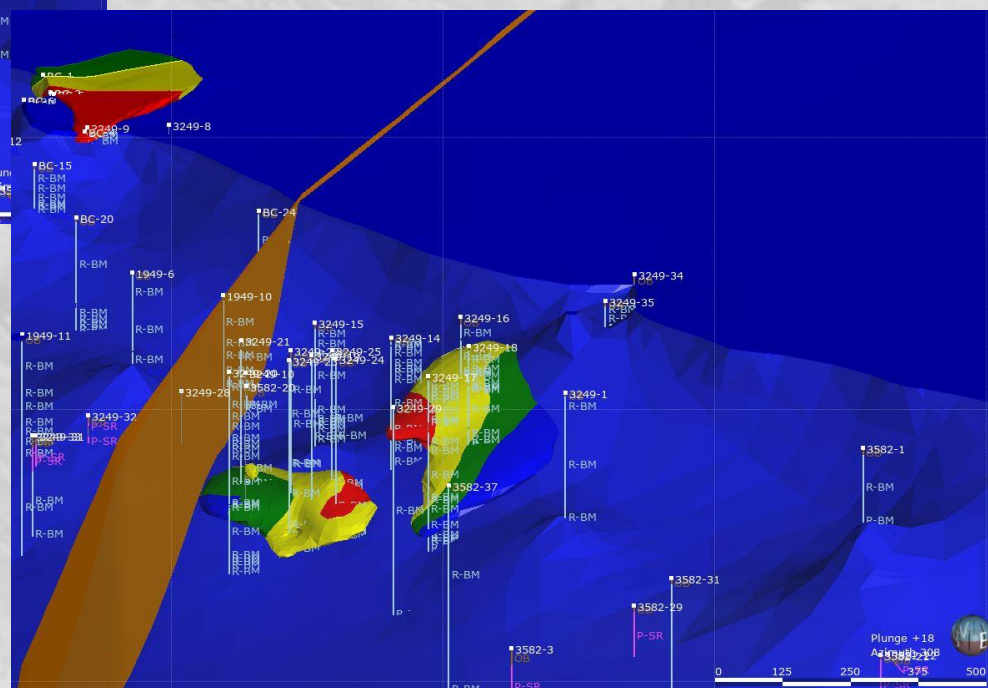


Unicorn Mineral Resources

Kilmallock Block – Leapfrog Model – Looking NW



- ❖ Min Zones relative to Base of Reef surface and NW-SE Faulting
- ❖ Bulgaden two bodies stepping down to the south
- ❖ Stratiform / stratabound



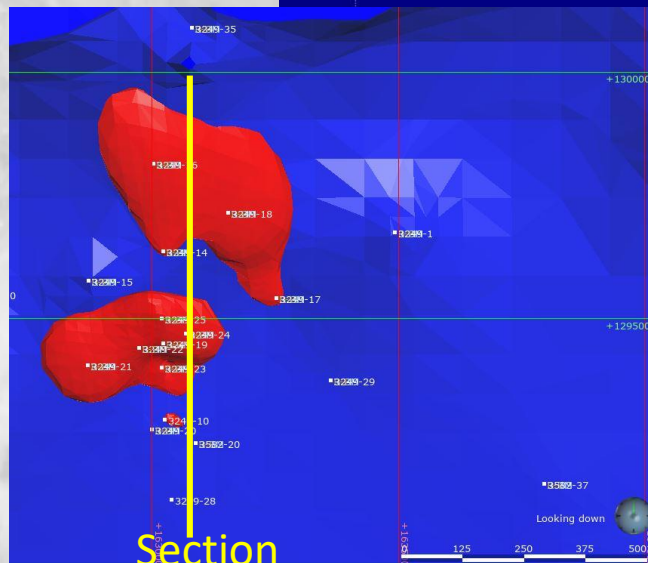
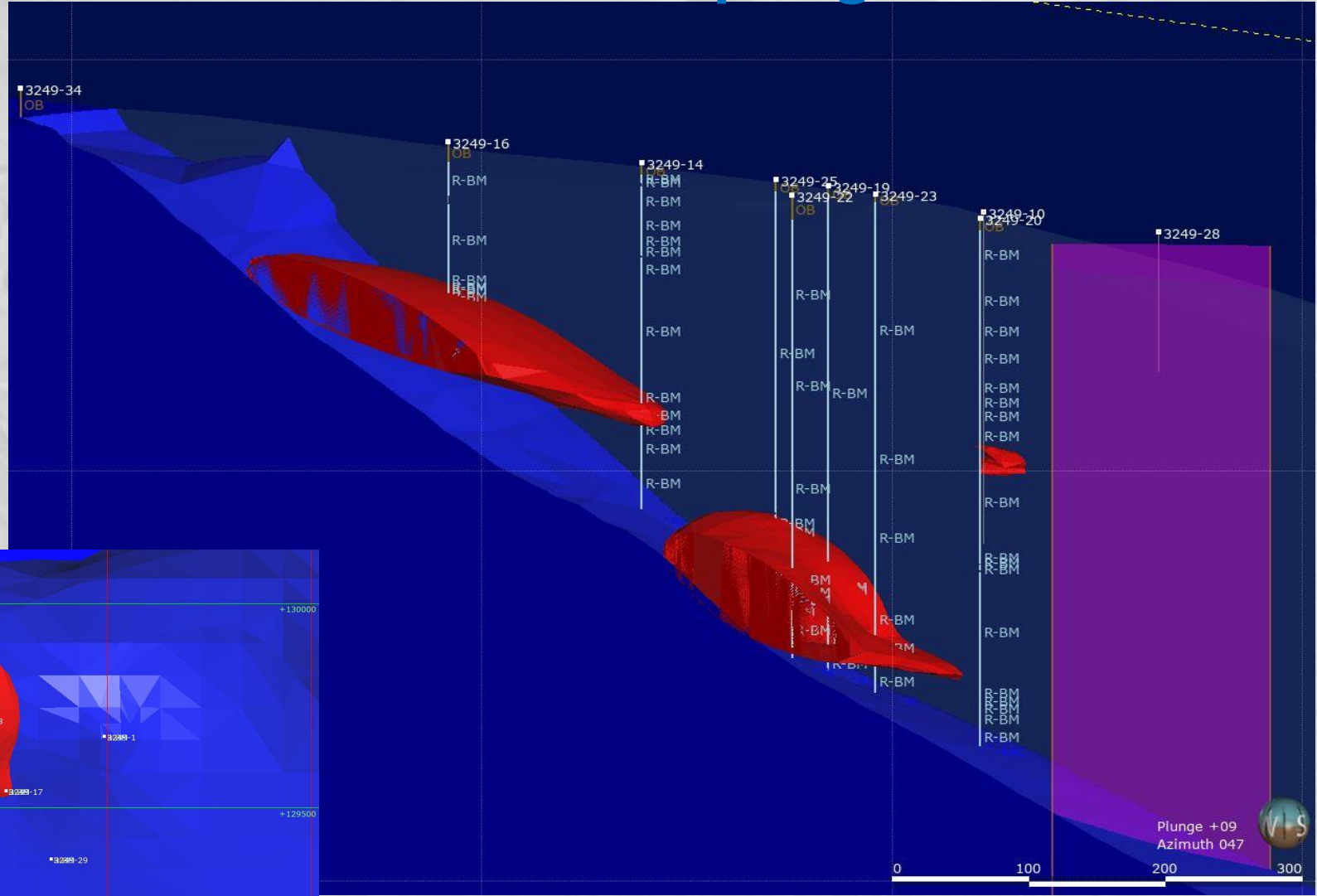
- ❖ Metal Zoning within Bulgaden Zones poorly constrained with high grade core

- ❖ Area between Bulgaden and Ballycullane open



Unicorn Mineral Resources

Kilmallock Block – Leapfrog Model

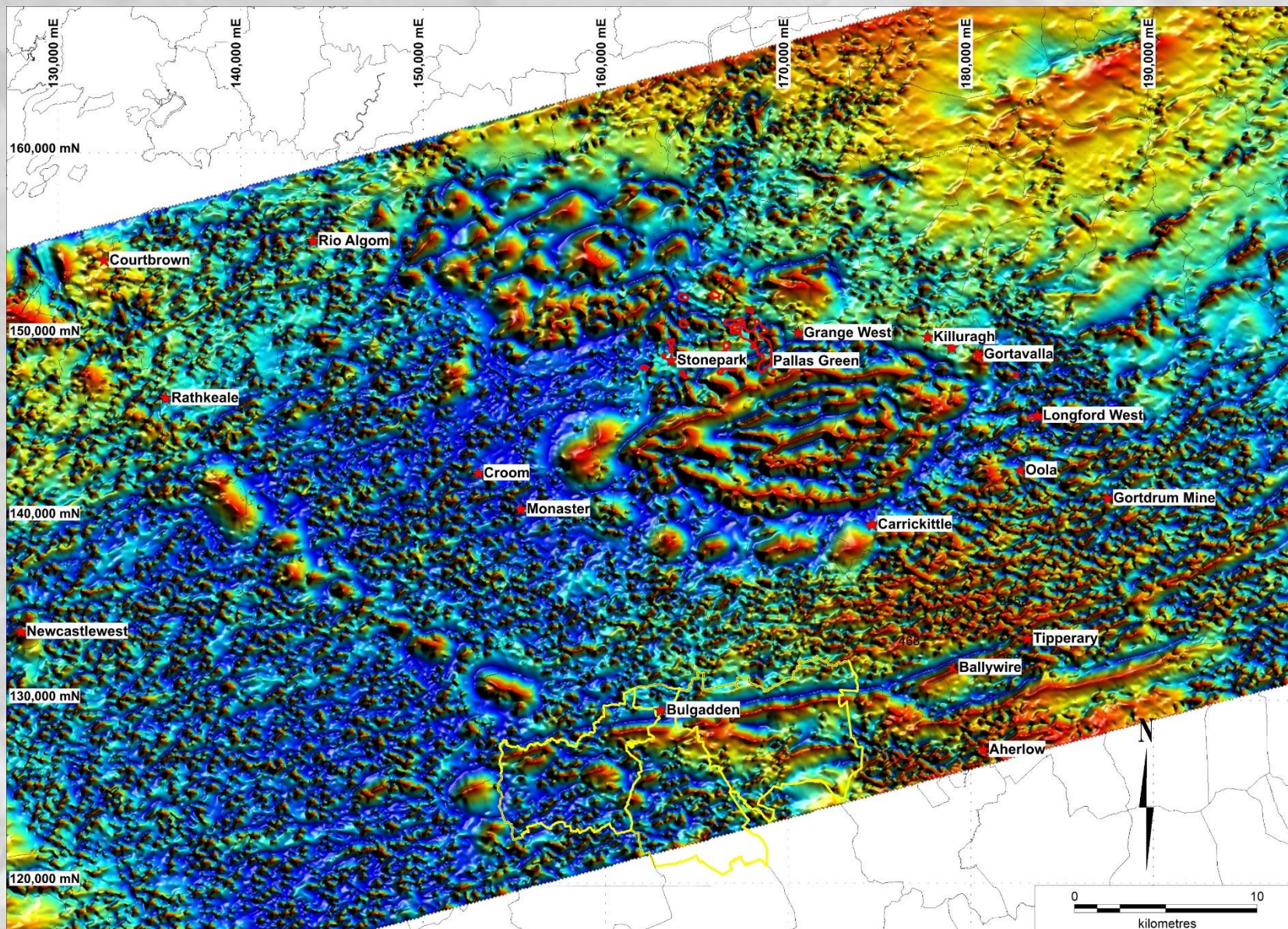


- ❖ Mineralised Zones at or close to base of Reef
- ❖ Mineralised bodies poorly constrained by drilling



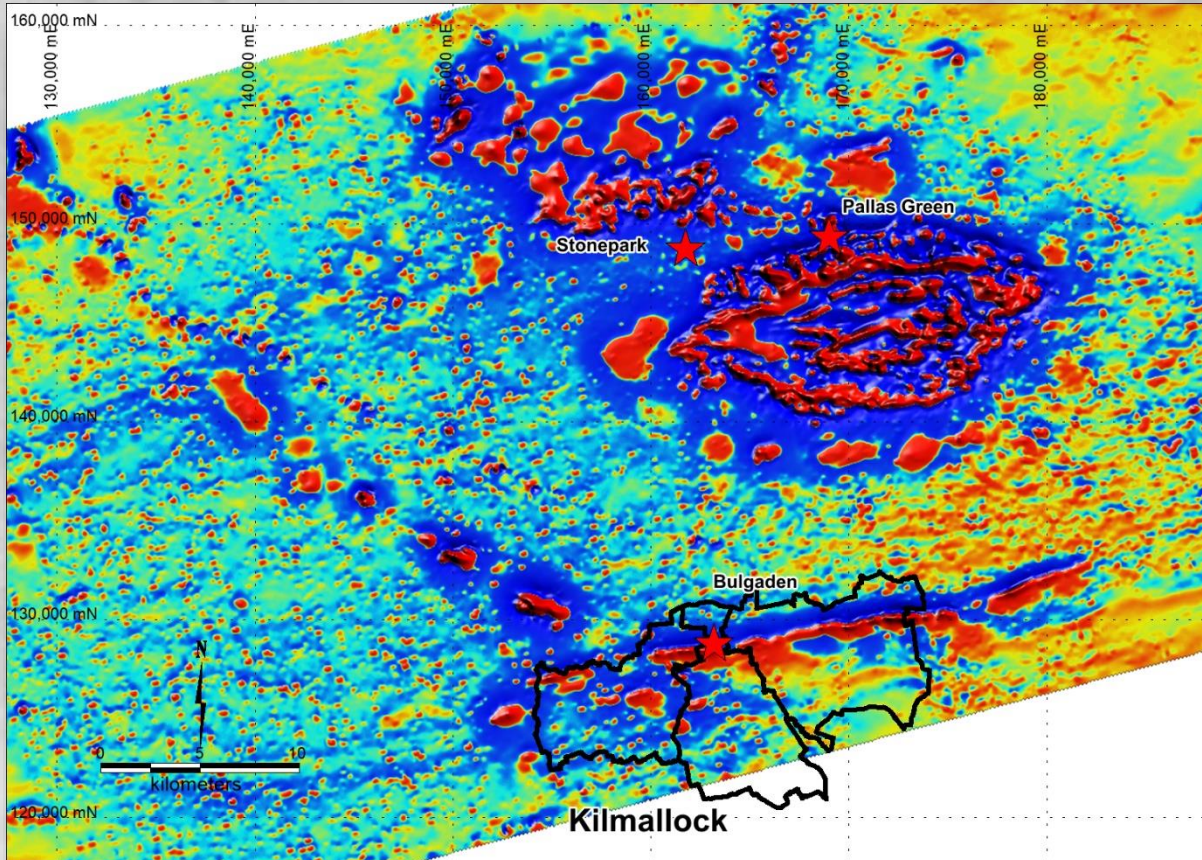
Unicorn Mineral Resources

Limerick – TELLUS Airborne Magnetics Results Oct 2019



Unicorn Mineral Resources

Kilmallock – TELLUS Airborne Magnetics

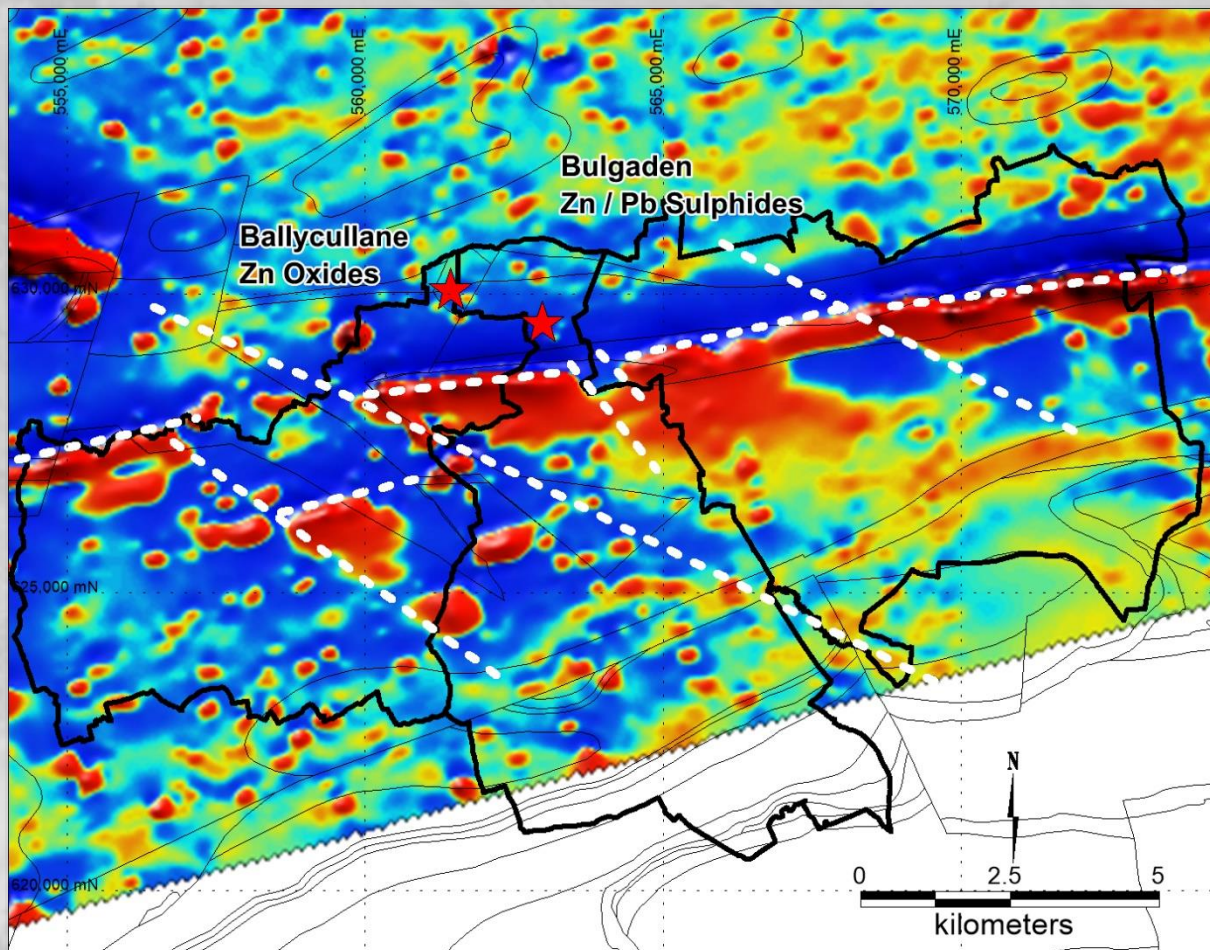


- ❖ TELLUS High Resolution magnetics – 200m line spacing
- ❖ Note the coincidence of main deposits with high magnetics – Knockroe Volcanics
- ❖ Note incidence of breaks (faulting / facies changes) along ENE trending high magnetic terminating at Bulgaden
- ❖ Strong NW-SE structural control – note the NW Lineaments and magnetic domain edge focused at Kilmallock



Unicorn Mineral Resources

Kilmallock – TELLUS Airborne Magnetics

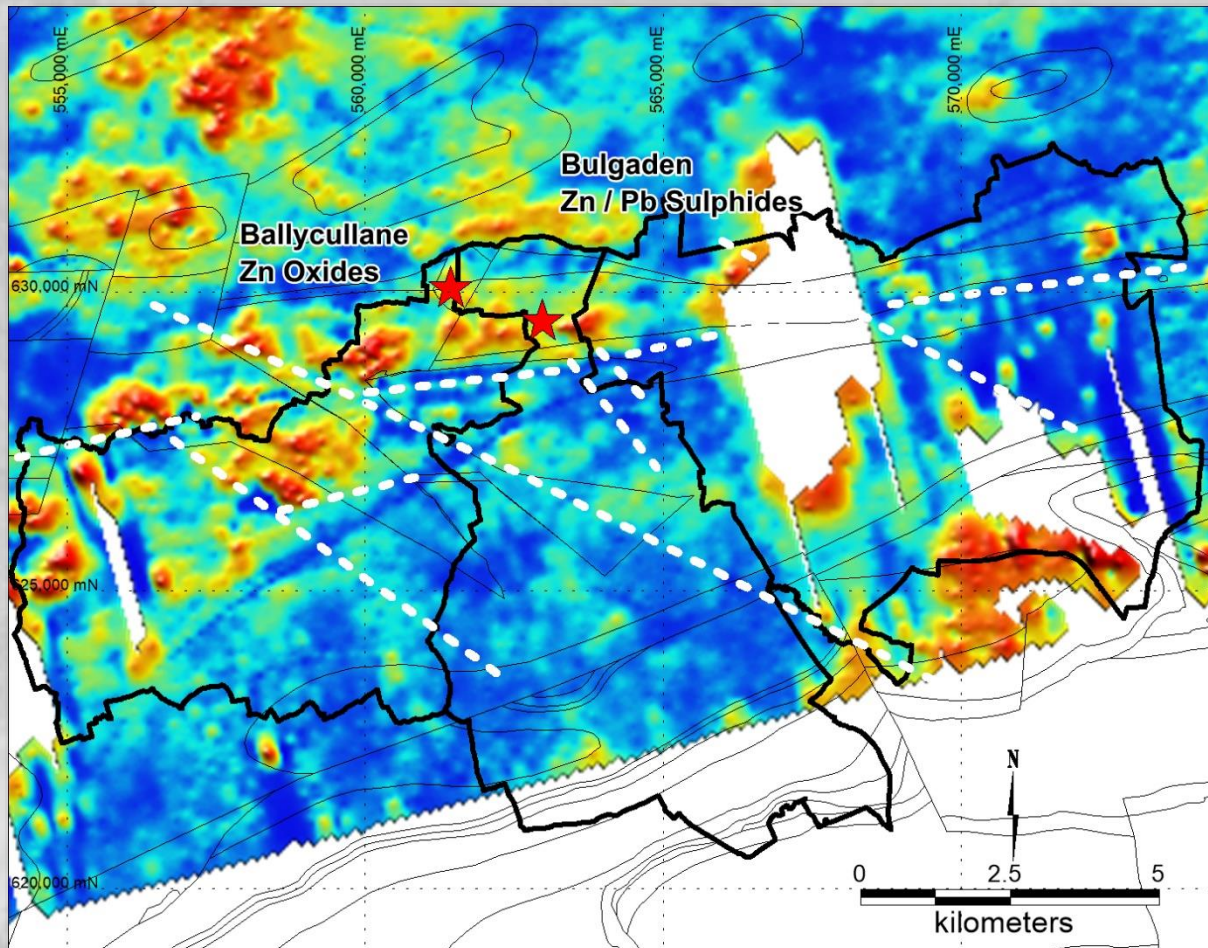


- ❖ TELLUS High Resolution magnetics – High magnetic susceptibility hot colours, mainly related to volcanics
- ❖ Lineaments show a clear NW-SE grain, analogous to Pallas Green and Stonepark.
- ❖ Note: NW-SE Domain boundary between high magnetic background to the east and lower magnetic background to the west
- ❖ Data is currently being decultured



Unicorn Mineral Resources

Kilmallock – TELLUS Airborne EM Resistivity



- ❖ EM data has been clipped when aircraft was flying >200m
- ❖ Hot colours relate to high resistivity (Reef subcrop)
- ❖ Note: complex break up of high resistivity at Ballycullane / Bulgaden related to local faulting / facies changes
- ❖ Good coincidence between magnetic lineaments and resistivity variability



Unicorn Mineral Resources

Waterford Block

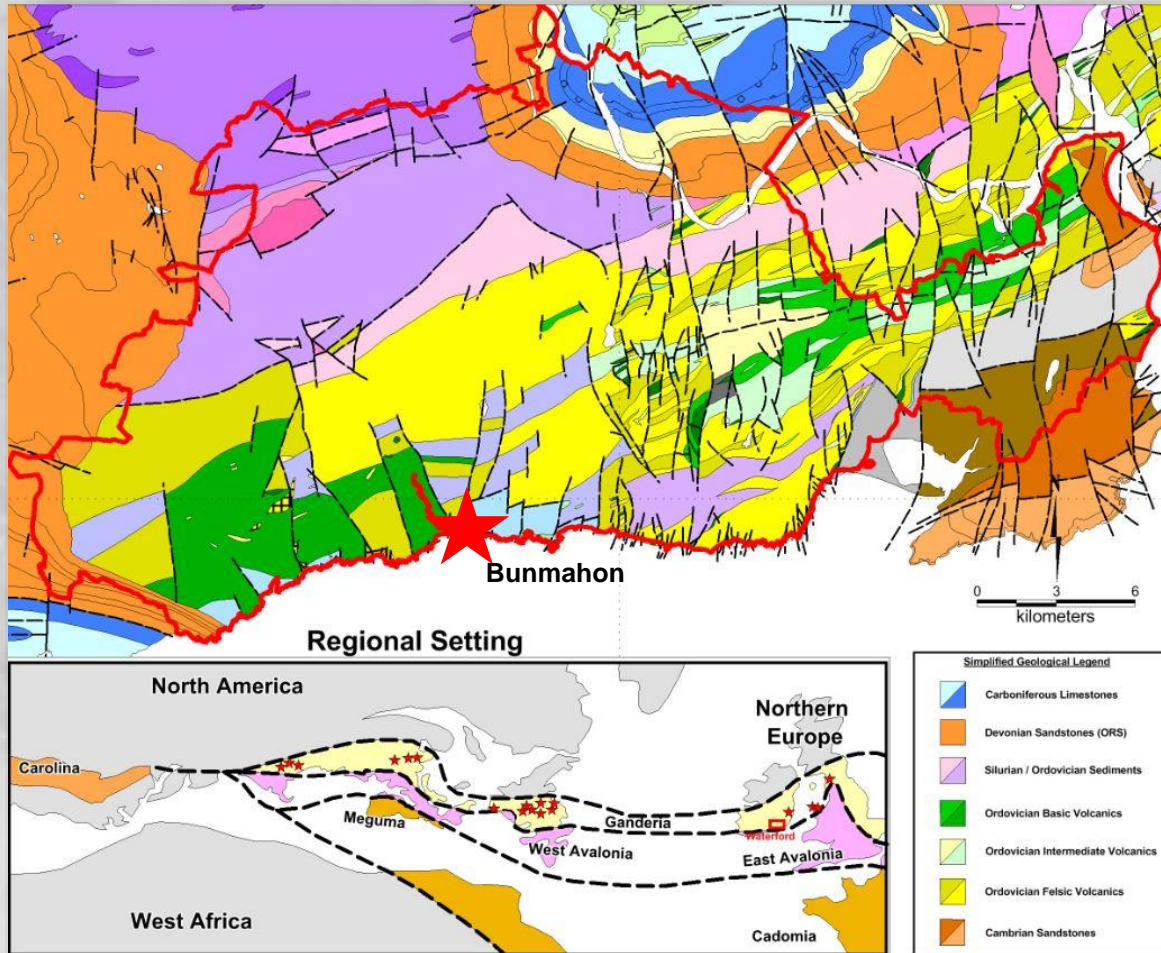
Block	Nine Contiguous Prospecting Licences, covering a surface area of 320.4km ²
Infrastructure	Well developed minor and motorway class road network. South and west of the major regional City of Waterford. Port facilities at Waterford and New Ross, located 15km northeast of the Licence Block. Extensive copper workings and occurrences form part of Copper Coast Geopark.
Regional location	Located along the southern extension of the Avoca / Parys Mountain Mineralising Trend. In a region of Ordovician / Silurian aged bimodal volcanics and metasediments.
Strategic Location	The historic Bunmahon Copper mine is located within the licence block and outcrops on the coast. Between 1826 and 1879, official records note that c.211,000 tonnes of copper metal was produced from Bunmahon.
Target	Volcanogenic Hosted Massive Sulphide deposits, Sediment Hosted Deposits and Shear Hosted Gold deposits
Geological Setting	Ordovician aged bimodal (basic - acidic) volcanics, interdigitating with metasediments overlain by Silurian aged sediments. Depositional environment is an Island Arc / Back Arc setting. Located along strike from major mining camps; Avoca and Parys Mountain to the east / northeast and Bathurst (New Brunswick) to the west (pre-Atlantic opening). Clear evidence of large scale active faulting and regional subsidence. Crustal thinning, basin development, high heat flow and alkali basalt extrusives. Nb / Zr plots confirm the prospectivity of the acid volcanics (rhyolites).
Significant Results	<p>Mapping has confirmed that the region hosts prospective stratigraphy for the target deposit types.</p> <p>Very little modern exploration has been carried out. The last significant work was carried out by Aquitaine in the early 1980's. Discussions with Aquitaine personnel confirm that the ground was surrendered because of internal company politics and the potential of the Waterford region was untested.</p> <p>UMR identified that the geological model for the region was not fit for purpose and have, in partnership with the Geological Survey of Ireland, recently carried out an Airborne Magnetics, EM and Radiometrics survey. The results of which will be used to more effectively target areas of significant potential.</p> <p>Historic diamond drilling is quite limited, given the scale of the region. The results of historic diamond drilling confirm that there is significant potential for VHMS and SEDEX mineralisation in this region with stringers and lenses of low grade massive sulphides intersected but not followed up.</p> <p>UMR has carried out detailed Lithogeochemical and deep overburden sampling supported by ground geophysics to confirm and extend historic work. The results have developed and refined targets, bringing them to stage where they are ready for a drilling campaign</p>



Unicorn Mineral Resources

Waterford Block

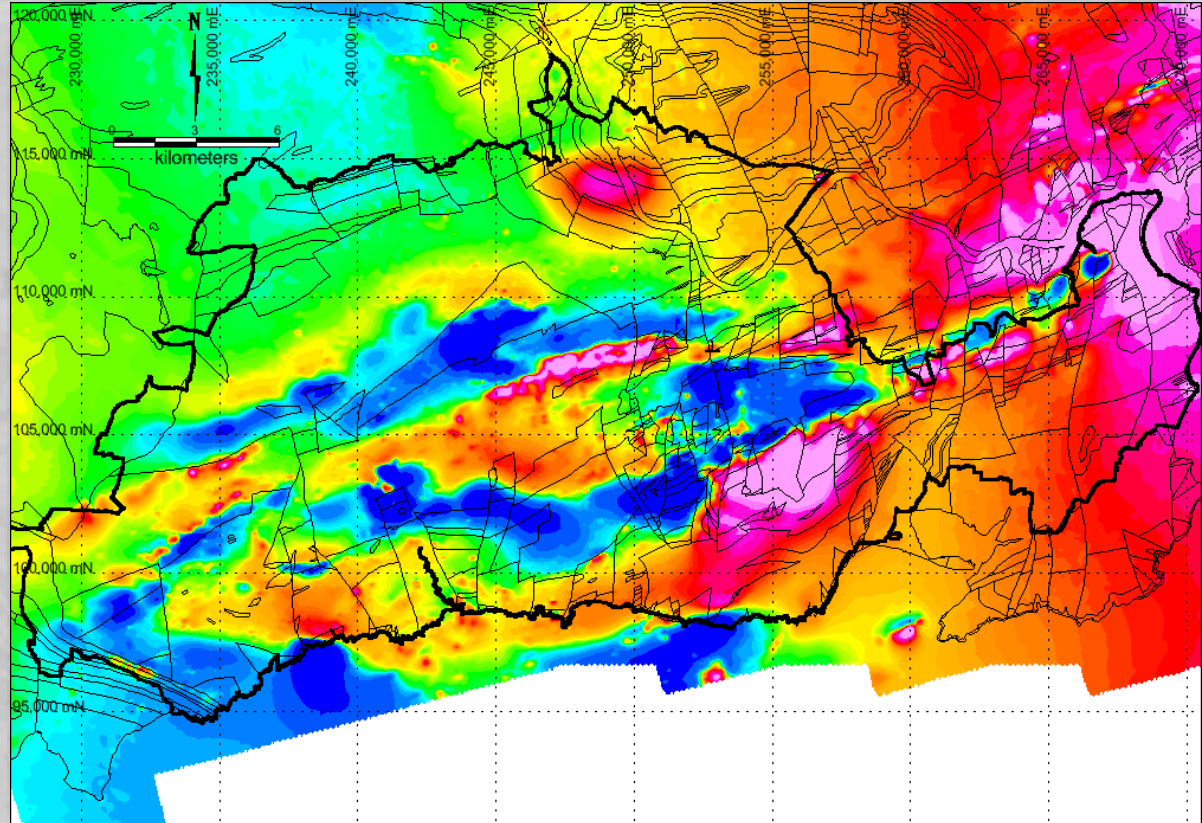
- ❖ Bimodal Ordovician Volcanics deposited in an extensional Arc environment
- ❖ Numerous Zn / Pb / Cu mineral occurrences
- ❖ Along strike from significant VHMS camps to the northeast and across the Atlantic to the west.



Unicorn Mineral Resources

Waterford Block

- ❖ Airborne geophysical survey flown in May / June 2016. UMR / GSI collaboration.
- ❖ Confirms the inaccuracy of the historic geological models – reinterpretation is in progress
- ❖ Geological / Structural contacts defined by the airborne geophysics are being used to more accurately define and refine targets to improve targeting efficiency



Unicorn Mineral Resources

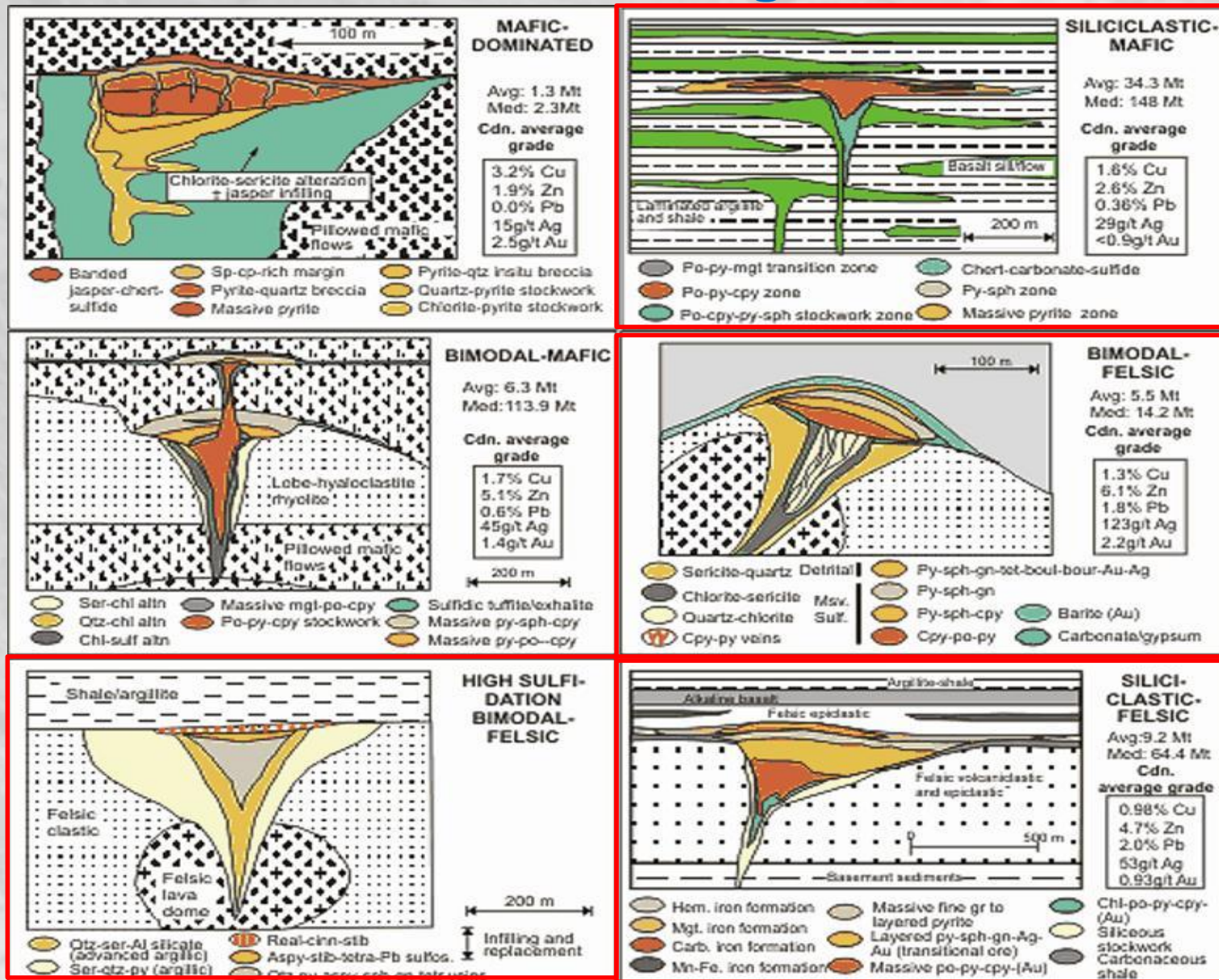
Waterford Current Situation / Challenges / Opportunities

- ❖ Historic exploration consisted of; geological mapping / prospecting, soil sampling (partial coverage), deep overburden sampling, stream sediment sampling, Airborne Geophysics Input EM (Barringer 1980), ground EM (Max-Min), gravity surveying, lithogeochemistry, diamond drilling .
- ❖ Recent exploration work (UMR) –digitisation of historic data, geological mapping / prospecting, Deep Overburden geochemistry, lithogeochemistry, panning, gravity surveying, airborne geophysics (high definition magnetics, Frequency domain EM and Radiometrics) and diamond drilling.
- ❖ Geology is well exposed along coast and shows a complex interdigitation of volcanics and sediments. Paucity of outcrop inland means that the current geological map is inaccurate and in particular the formational contacts are poorly established.
- ❖ Recent airborne survey has delineated the contacts between various facies allowing for more accurate targeting of drilling and follow up exploration.
- ❖ A 6 hole drilling programme commenced in October 2019 to test identified Target areas for Mineralisation and also to confirm revised interpretation of Geology.



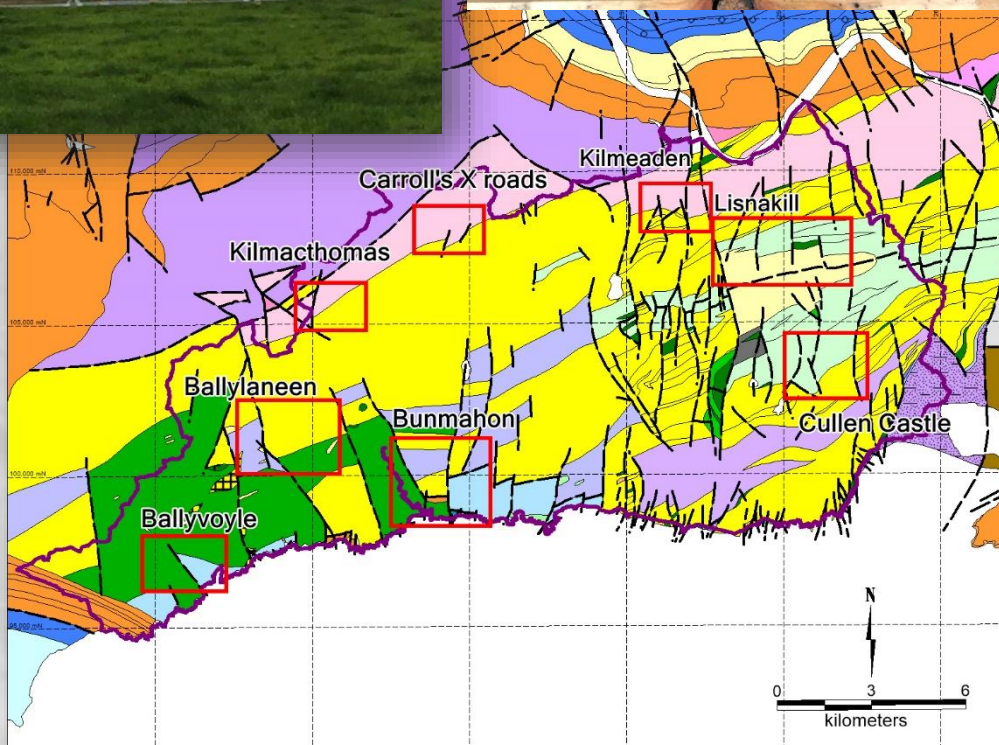
Unicorn Mineral Resources

Waterford VHMS Target Models



Unicorn Mineral Resources

Waterford Block



- ❖ Preliminary work has identified eight target areas for follow up groundwork.
- ❖ This work is ongoing and includes: deep overburden sampling, gravity and lithogeochemical sampling.
- ❖ Results from the first few areas tested are encouraging and high quality drill targets have been identified.
- ❖ Drilling commenced in October 2019 with intersections of Zinc and Lead in all 6 holes.



Unicorn Mineral Resources

Bunmahon



- Mine records state that c. 200,000t of copper was produced from Bunmahon in the 18th C.
- Based on an average grade of 5%Cu the deposit was >4Mt
- The style of mineralisation is Quartz Shear Zones hosting Chalcopyrite / Bornite, with minor Pyrite and Galena
- This is considered to be analogous to the Churchill Deposit in Northern British Columbia
- Considered to be an indicator of the presence of other types of copper deposits - VHMS



Unicorn Mineral Resources

Lisnakill Target Area

Geology	North limb of synclinal structure. Strata dip gently to the south. Contact between Rhyolitic and andesitic volcanics. Mapping and prospecting detected silicified gossanous outcrop at Orchardstown.
Geophysics	The Tellus survey defined a major E-W striking magnetic break, thought to be the contact between the Rhyolites and andesites, this was found to be at least 500m further to the south than had been mapped. Preliminary gravity surveying by UMR has identified a significant residual anomaly down dip from a major geochemical anomaly
Geochemistry	Soil and Deep Overburden (base of Till) Sampling has identified a coherent Zn / Pb anomaly (up to 6,700ppm Zn)
Lithogeochemistry	Lithogeochemical sampling and analysis undertaken by UMR has defined an anomalous trend related to sericite alteration with a strong AI (Alteration Index) and CCPI (Chlorite, Carbonate, Pyrite Index).
Drilling	Limited phase of drilling was carried out in the early 1980's by Aquitaine. Several of the holes intersected stringer base metal mineralisation (stringer sphalerite & galena) with associated quartz carbonate veining and sericite alteration. Zn + Pb of up to 2.9% over 3.6m are the best intersections so far from this area)
Target	Top of Campile Fm. VHMS style mineralisation. Follow up on historic DOB geochemistry and ground geophysics. Test new geological interpretation based upon new airborne data. Follow up on the stringer/ disseminated mineralisation intersected by historic drilling



Unicorn Mineral Resources

Kilmeaden Target Area

Geology	Contact between the Campile rhyolites and sediments, locally black shales. Cross cutting NNW striking offsets. Geology is poorly defined due to lack of outcrop.
Geophysics	Airborne magnetic data highlights a strongly developed east-west contact from high Magnetic susceptibility in the south to low in the north
Geochemistry	Soil geochemistry is not particularly elevated in this region. However, a DOB survey carried out by Aquitaine detected a very strong combined Zn, Pb, Cu anomaly running across this area.
Lithogeochemistry	Due to lack of outcrop or float development across this target area no lithogeochemical samples from the greater Kilmeaden area have been obtained.
Drilling	<p>Aquitaine drilled three diamond drillholes WKI01-03 in this area. WKI 02 & 03 were drilled in unmineralised sediments. From the recently acquired magnetic data it seems they were too far north of the main contact in the area. WKI03 was drilled on a Cu anomaly just at the contact and collared in volcanics, overlying black shales. This hole intersected 3.0m grading 2.5% Cu.</p> <p>No further drilling has been carried out since.</p>
Target	Top of Campile Fm. VHMS style mineralisation. Follow up on historic DOB geochemistry and ground geophysics. Test new geological interpretation based upon new airborne data that redefines the contact between the volcanics and the sediments. Follow up on the high grade Copper mineralisation intersected by historic drilling



Unicorn Mineral Resources

Bunmahon Target Area

Geology	Contact between the basic Bunmahon Fm and the Campile felsic extrusives (Rhyolites / tuffs). Historic mining centred at Bunmahon mining chalcopryite in steeply dipping, NW-SE striking, metric scale, vein systems / lodes associated with a quartz gangue. Evidence is exposed along the coast of rhyolites with barren pyritic stockworks. The historic Bunmahon Copper mine is located within the licence block and outcrops on the coast. Between 1826 and 1879, official records note that c.211,000 tonnes of copper metal was produced from Bunmahon.
Geophysics	Tellus airborne magnetics map a pronounced NW-SE grain across this area paralleling the orientation of the vein systems, suggesting either a fundamental geological control or structural offsets related to shearing.
Geochemistry	Very strongly anomalous Cu values detected in the recent soil sampling, probably to be expected due to contamination from historic mining activity.
Lithogeochemistry	Perhaps not surprisingly given the style of mineralisation (epigenetic Cu) the Lithogeochemistry does not pick up strong alteration signatures that would normally be associated with VMS systems.
Drilling	Limited drilling has taken place in the Bunmahon region. Most of the historic mining was based upon drifting along veins systems exposed on the coast and sinking shafts on outcropping mineralisation inland. One would imagine that this would leave scope for further discoveries in this region.
Target	Epigenetic shear hosted copper mineralisation within steeply dipping vein systems. Quartz veining with chalcopryite and minor bornite. The two main lodes, the Tankardstown and Stage lodes dip towards each other in what could be a synclinal structure. This setting opens the possibility that there is the potential for saddle reef structures at the closure of the fold axis, with thicker and higher grade mineralisation.



Unicorn Mineral Resources

Ballyvoyle Target Area

Geology	Contact between the Bunmahon Volcanics and the sediments / felsites to the east. The unconformable contact with the ORS outcrops to the south.
Geophysics	Anomaly detected by the Aquitaine input survey was followed up by DOB sampling
Geochemistry	Significantly anomalous copper values detected in DOB. A strong anomaly with up to 2038ppm Cu was detected. There is little enrichment of Zn or Pb associated with this anomaly. The soil values are uniformly low across this region, perhaps due to thickening of overburden approaching the higher ground underlain by ORS.
Lithogeochemistry	No samples collected in this area
Drilling	No drilling has been carried out in this area
Target	Copper rich massive sulphide mineralisation associated with the Bunmahon basic to intermediate volcanics



Unicorn Mineral Resources

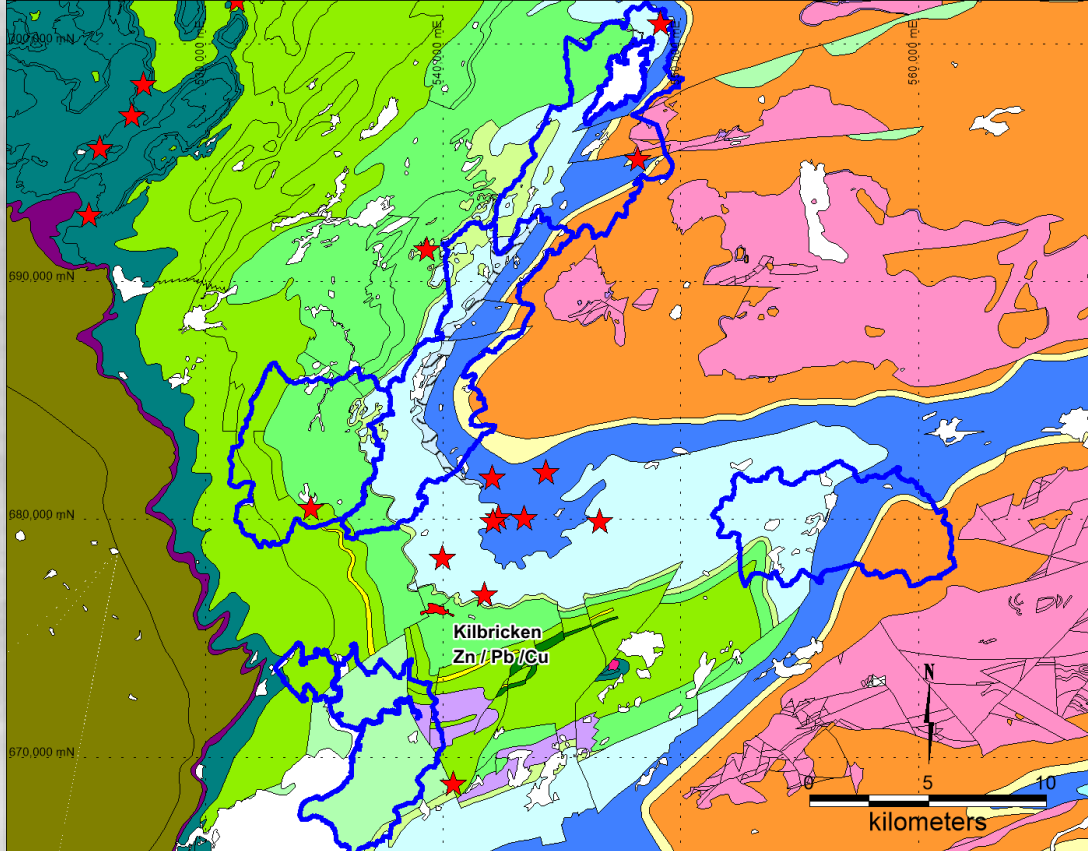
Gort Block

Block	Seven Non Contiguous Prospecting Licences, Surface Area 292.65km ²
Infrastructure	Well developed minor and motorway class road network, north and east of the major regional town of Ennis
Regional location	Located at the intersection between the Tynagh-Ballinalack and Limerick Mineralising Trends
Strategic Location	25km Southwest of the Tynagh Deposit (11Mt @ 5%Zn/ 6%Pb) and 5km west / northwest from the Kilbricken Deposit (2.7Mt @8.8%Zn eq Indicated & 1.7Mt @ 8.2% Zn eq Inferred).
Target	Base of Waulsortian Reef - Carbonate Hosted, Zinc / Lead Massive Sulphides
Geological Setting	Western side of the Sleive Barnagh Lower Palaeozoic Inlier and around the margins of the Clare Syncline. Structurally complex with early stage fault movement controlling local shelf / basin margins.
Significant Results	Prospecting has discovered lead and copper mineralisation in float and outcrop Mapping has defined major basement faults, with low grade Cu mineralisation that can be traced through the Carbonate Stratigraphy Diamond drilling has intersected Waulsortian Reef hosted massive pyrite, significant faulting with well developed breccias, dolomite and disseminated pyrite.



Unicorn Mineral Resources

Gort Block



- ❖ Extensive untested Waulsortian Reef on UMR ground
- ❖ Highly significant prospect being drilled by Hannan Metals at Kilbricken, just 5km away to the South-East. (2.7Mt @ 8.8% Zn eq. Indicated & 1.7Mt @ 8.2% Zn eq. Inferred)
- ❖ The targets are relatively shallow (<300m).
- ❖ Numerous mineral occurrences across the Clare region developed high in the stratigraphy, can be associated with deeper, high grade, massive sulphides located at the base of the Waulsortian Reef



Unicorn Mineral Resources

Gort Block

- ❖ Ground geophysical surveying is ongoing
- ❖ Target generation is ongoing using new data / models
- ❖ **An Airborne Geophysical Survey (Magnetics, EM and Radiometrics) expected to be flown in the Spring 2020**
- ❖ Future Exploration Program will be decided on interpretation of current ground exploration together with results from Airborne Survey



Unicorn Mineral Resources

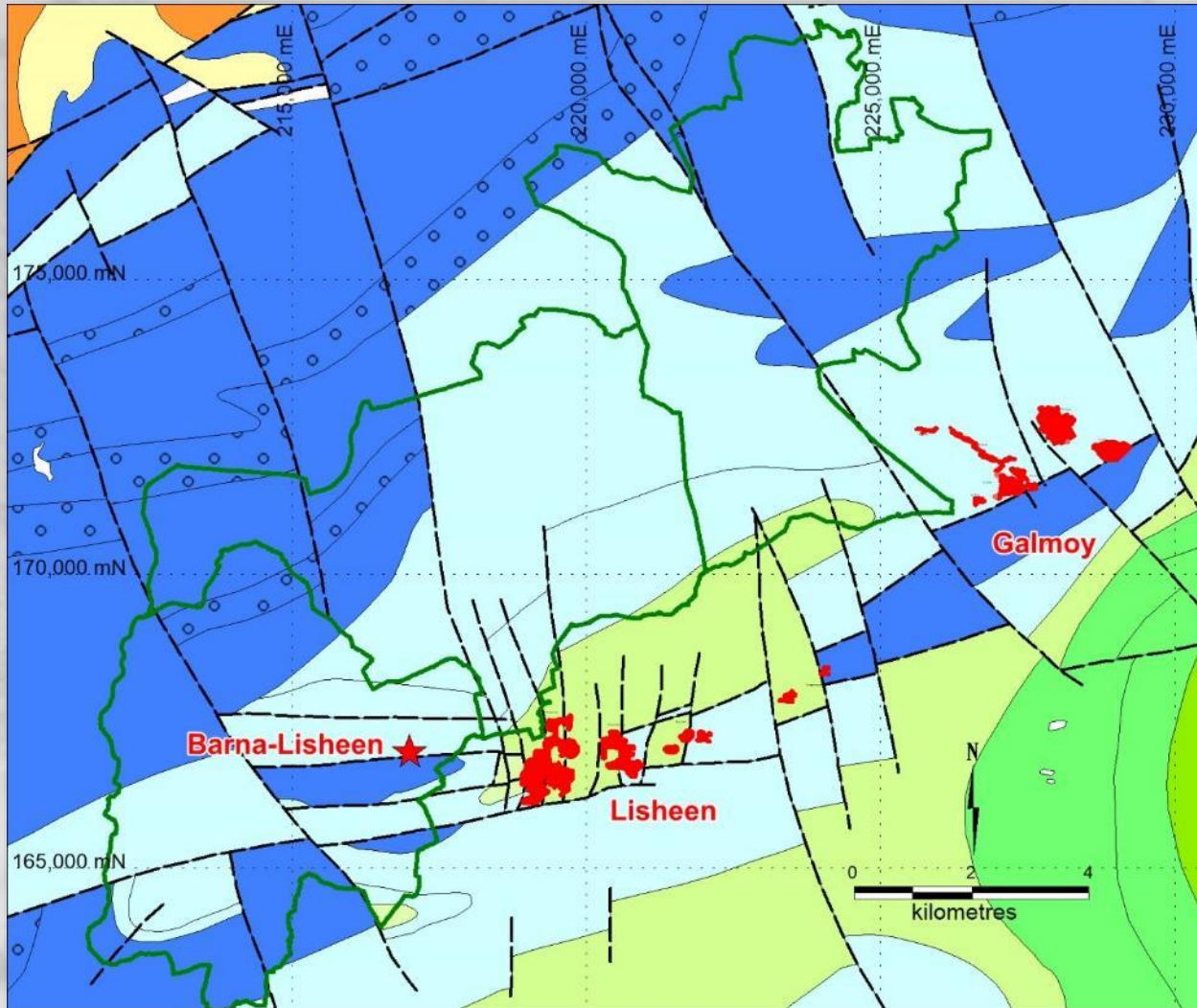
Lisheen Block

Block	Three contiguous Prospecting Licences, Surface Area 102.24km ²
Infrastructure	Well developed minor and regional class road network, south of the small town of Kilcormick. Land use is dominated by pasture land for grazing of sheep, cattle with minor raised bog.
Regional location	Located along the world famous, highly prospective Rathdowney Mineralising Trend.
Strategic Location	Adjacent to the Lisheen and Galmoy Zn / Pb Deposits
Target	Base of Waulsortian Reef - Carbonate Hosted, Zinc / Lead Massive Sulphides
Geological Setting	Located along the Rathdowney Trend immediately north of the Lisheen and Galmoy deposits occupying a strategic location around both of these deposits. The licences are underlain by well developed and regional dolomitised Waulsortian Reef that dips gently to the south. The area is cross-cut by Caledonian faults orientated ENE-WSW and NW-SE. Extensions of the main controlling fault systems at both the Lisheen and Galmoy deposits can be traced onto these licences. Historic exploration was focused upon the immediate mine areas at both deposits, there is significant opportunity to explore for additional deposits in the 5 – 10Mt range and the imminent reopening of the Galmoy mine mean that there is potential to develop a mining centre being fed by numerous smaller deposits.
Significant Results	<p>Recent Mining has taken place immediately adjacent to these licences.</p> <p>Lisheen : 22Mt @12% Zn / 2% Pb - Located immediately to the south of the Block</p> <p>Galmoy : 9Mt @13.5 Zn / 2% Pb - Located immediately to the east of the Block</p> <p>Barna Lisheen – significant mineral occurrence located on the licence Block c.1km northwest of the Lisheen Main Zone Lens. Base of Reef breccia hosted massive sulphides dominated by sphalerite and galena – highly prospective and undeveloped. The presence of Barna Lisheen supports the potential for other satellite deposits across this belt. Drill hole No. 20 had an intersection of 6.8m@ 7.16% Zn / 0.17%Pb Inc. 2.1m@ 13%Zn</p> <p>Early stage evaluation must be completed ASAP to develop an exploration strategy for the block</p>



Unicorn Mineral Resources

Lisheen Block



- ❖ Located along the Rathdowney Trend
- ❖ Well developed Waulsortian Reef with depositional / structurally controlled facies variation
- ❖ High Grade Irish Type massive sulphide occurrences
- ❖ Region is not fully explored and opportunities exist to discover additional massive sulphide deposits



Unicorn Mineral Resources

UMR Conclusion

- ❖ High grade Waulsortian Reef hosted mineralisation at Kilmallock in the Limerick province is an outstanding opportunity. Results from the “TELLUS” Airborne survey released in October 2019 have enhanced the prospectivity of this Licence area and shows a 14Km East West strike through Bulgaden high grade discovery with potential for similar discoveries along same.
- ❖ The Waterford Block is an exciting opportunity and the “TELLUS” Airborne survey has allowed us to develop new geological models. Unicorn has just commenced an 8 hole drilling programme in October 2019 to test identified Target areas for Zinc and Copper.
- ❖ The three prospecting licences on the Lisheen Block are contiguous with the Lisheen and Galmoy Deposits along the world famous Rathdowney Trend. There is existing mineralisation on the licences and this block is an undoubted high quality addition to UMR’s portfolio of prospective ground
- ❖ The Gort Block is adjacent to Hannan Metals “Kilbricken Copper/Zinc Ore body.



Unicorn Mineral Resources

Corporate Overview

Highly experienced Board and Management – Strong Technical Base



Directors

Paddy Doherty – Chairman

Mr Doherty is a founding partner, Chairman and Managing Director of the Electro Automation Group. The Group was founded in 1984 and has developed various interests in Design, Commissioning and Maintenance, which primarily include Car Parking Equipment, Automatic Gates and Doors, Security Equipment, Access Controls, Tolling and one off Design Projects. The Group has interests in Ireland, Northern Ireland, England and Germany.

Richard O'Shea – CEO

Over 25 years experience in Exploration Companies including CEO of AIM listed Ovoca Gold

John O'Connor – CFO

Over 30 years experience in Exploration Companies including CFO of AIM listed Ovoca Gold

Dave Blaney P.Geo – COO

30 Years experience in the exploration industry with a particular focus on the Irish Midlands Orefield

Consultant

Graham Reid P.Geo

40 Years experience in Irish and worldwide exploration with Geophysical expertise



UMR- Corporate Overview continued

- UMR's exploration strategy has been focused on the prospective 'Irish Midlands Orefield' where UMR has three licence blocks: Gort, Kilmallock, and Lisheen-Barna , and a block of nine licences over the volcano-sedimentary terrain with potential for VMS deposits in Waterford. See map with UMR licences shown together with existing mining deposits and new discoveries at Pallasgreen, Stonepark and Kilbricken.
- Unicorn currently has approx. 12.5 Million shares in issue and aprox 2.5 million options. (Approx. 15 Million shares fully diluted).
- The company has been managed in a very cost effective manner with due regard to maximising the potential of every euro spent to contribute to making a discovery.
- There are currently aprox 60 Shareholders with the majority being family and friends of the Directors. (Tightly held).
- UMR plans to concentrate its exploration effort on developing the quality drill targets on its highly prospective blocks over next 12 months.

Corporate Contact
Richard O Shea CEO
Email : ros@eircom.net
Mobile : +353 87 2560397

Technical Contact
Dave Blaney Geologist COO
Email : blaneyd@brg.ie
Mobile : +353 87 2796487

- <http://unicornmineralresources.com/>

