



UMR Project Review – August 2018



Disclaimer

This presentation does not constitute or form part of any offer for sale or solicitation of any offer to buy or subscribe for any securities in Unicorn Mineral Resources Ltd. nor shall it or any part of it form the basis of, or be relied on in connection with, or act as any inducement to enter into, any contract or commitment whatsoever. No reliance may be placed for any purpose whatsoever on the information or opinions contained in this presentation or on any other document or oral statement or on the completeness, accuracy or fairness of any such information and/or opinions. No undertaking, representation, warranty or other assurance, express or implied, is made or given by or on behalf of Unicorn Mineral Resources or any of their respective directors, employees or advisers, as to the accuracy or completeness of the information or opinions contained in this presentation, and (save in the case of fraud) no responsibility or liability is accepted by any of them for any such information or opinions or for any errors, omissions, misstatements, negligence or otherwise contained or referred to in this presentation. The contents of this presentation have not been approved by an authorized person within the meaning of the Financial Services and Markets Act 2000.

This presentation is not a prospectus within the meaning of the Prospectus (Directive 2003/71/EC) Regulations 2005 of Ireland and therefore has not been approved by the Irish Financial Services Regulatory Authorities being the competent authority for the purposes of Directive 2003/71/EC in Ireland. This presentation is not an offering document for the purposes of section 49 of the Investment Funds, Companies and Miscellaneous Provisions Act 2005 of Ireland.

This Presentation has been prepared by the Directors of Mineral Resources and is being issued solely to and directed at persons who have professional experience in matters relating to investments falling within Article 19(1)(a) of the Financial Services and Markets Act 2000 (Financial Promotion) Order 2005 (as amended the "FPO") or (b) high net worth entities and other persons to whom the presentation may otherwise lawfully be communicated, falling within Article 49(1)(a) of the FPO (all such persons together being referred to as "Relevant Persons"). In consideration of the receipt of the presentation each recipient warrants and represents that he or it is a person falling within that description. Delivery of this information to any other person or reproduction, in whole or in part, without the prior consent of Unicorn Mineral Resources is prohibited.

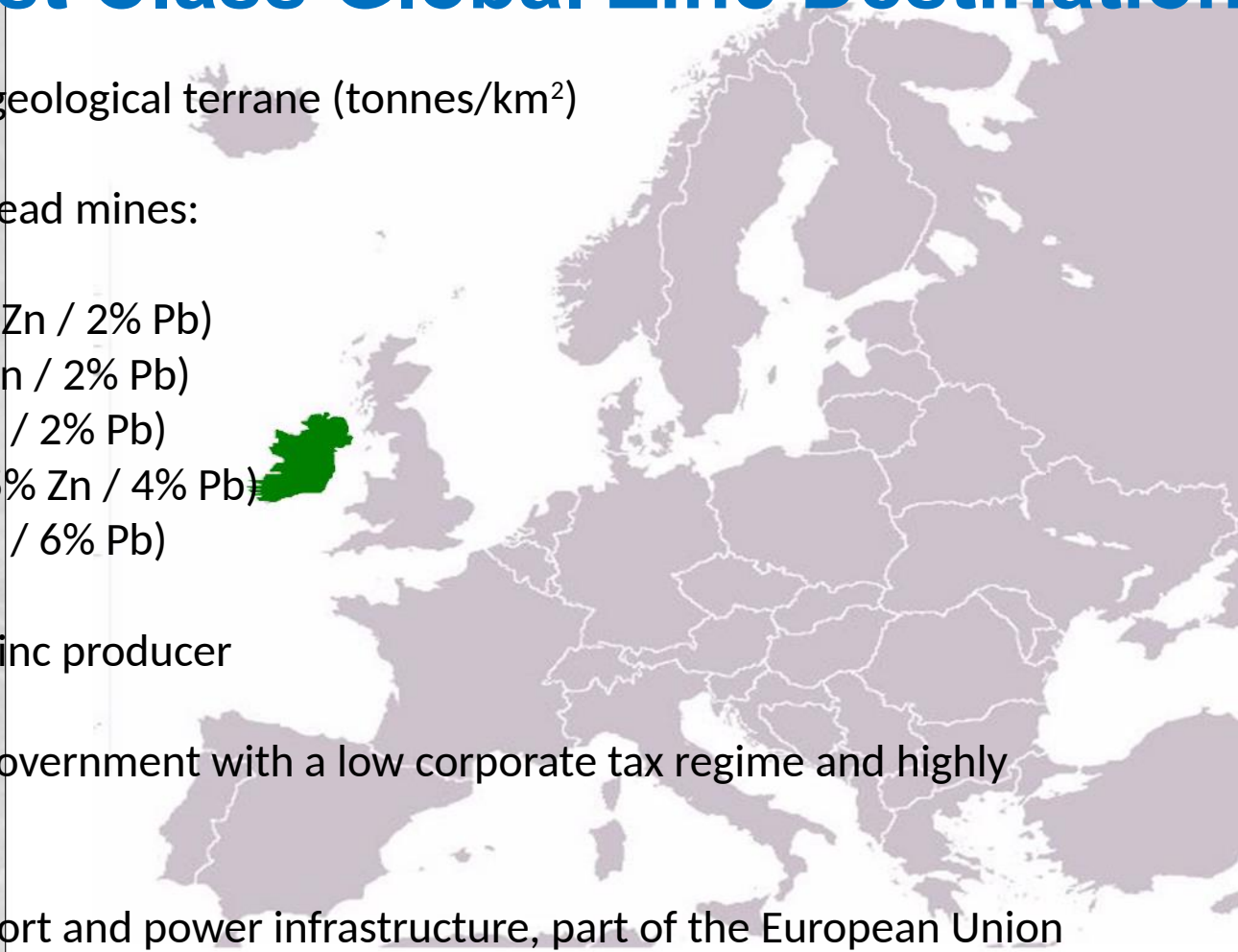
This information is being supplied to you, in whole or in part, for information purposes only and not for any other purpose. In particular, the distribution of this document in jurisdictions other than United Kingdom or Ireland may be restricted by law and persons into whose domain this document comes should inform themselves about, and observe, any such restrictions. Any failure to comply with these restrictions may constitute a violation of laws of any such other jurisdictions.



Unicorn Mineral Resources

Ireland – A First Class Global Zinc Destination

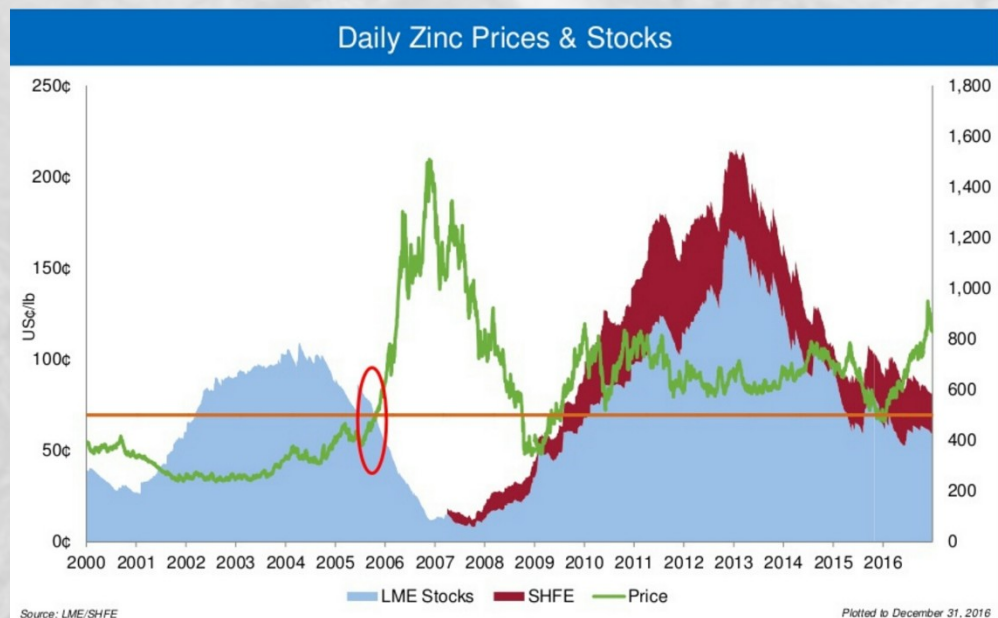
- ❖ The world's most fertile geological terrane (tonnes/km²)
- ❖ Large, high grade zinc / lead mines:
 - Navan** >125Mt (8% Zn / 2% Pb)
 - Lisheen** 22Mt (14% Zn / 2% Pb)
 - Galmoy** 9Mt (12% Zn / 2% Pb)
 - Silvermines** 18Mt (5% Zn / 4% Pb)
 - Tynagh** 11Mt (5% Zn / 6% Pb)
- ❖ The world's 10th largest Zinc producer
- ❖ Stable, mining friendly government with a low corporate tax regime and highly educated workforce
- ❖ Highly developed transport and power infrastructure, part of the European Union
- ❖ UMR ahead of the competition with respect to acquisition of high quality zinc prospects



Unicorn Mineral Resources

Zinc is Poised for Record Price Levels

- ❖ LME Stocks remain at 12 year lows.
- ❖ Demand continuing to develop
- ❖ Zinc supply shows a sustained fall since the beginning of 2013 and continues to fall.
- ❖ No large scale projects in the pipeline with the exception of technically, metallurgically or geopolitical challenging deposits
- ❖ Supply / demand fundamentals analogous to 2006 when the zinc price rose by c. 300%
- ❖ Strong potential for price to increase above \$2.00/lb



Unicorn Mineral Resources

Corporate Overview

Highly experienced Board and Management – Strong Technical Base

Directors

Paddy Doherty – Chairman

Mr Doherty is a founding partner, Chairman and Managing Director of the Electro Automation Group. The Group was founded in 1984 and has developed various interests in Design, Commissioning and Maintenance, which primarily include Car Parking Equipment, Automatic Gates and Doors, Security Equipment, Access Controls, Tolling and one off Design Projects. The Group has interests in Ireland, Northern Ireland, England and Germany. Group Turnover for the current year is expected to be in excess of €23 Million.

Richard O'Shea – CEO

Over 25 years experience in Exploration Companies including CEO of AIM listed Ovoca Gold

John O'Connor – CFO

Over 30 years experience in Exploration Companies including CFO of AIM listed Ovoca Gold

Dave Blaney P.Geol – COO

30 Years experience in the exploration industry with a particular focus on the Irish Midlands Orefield



Unicorn Mineral Resources

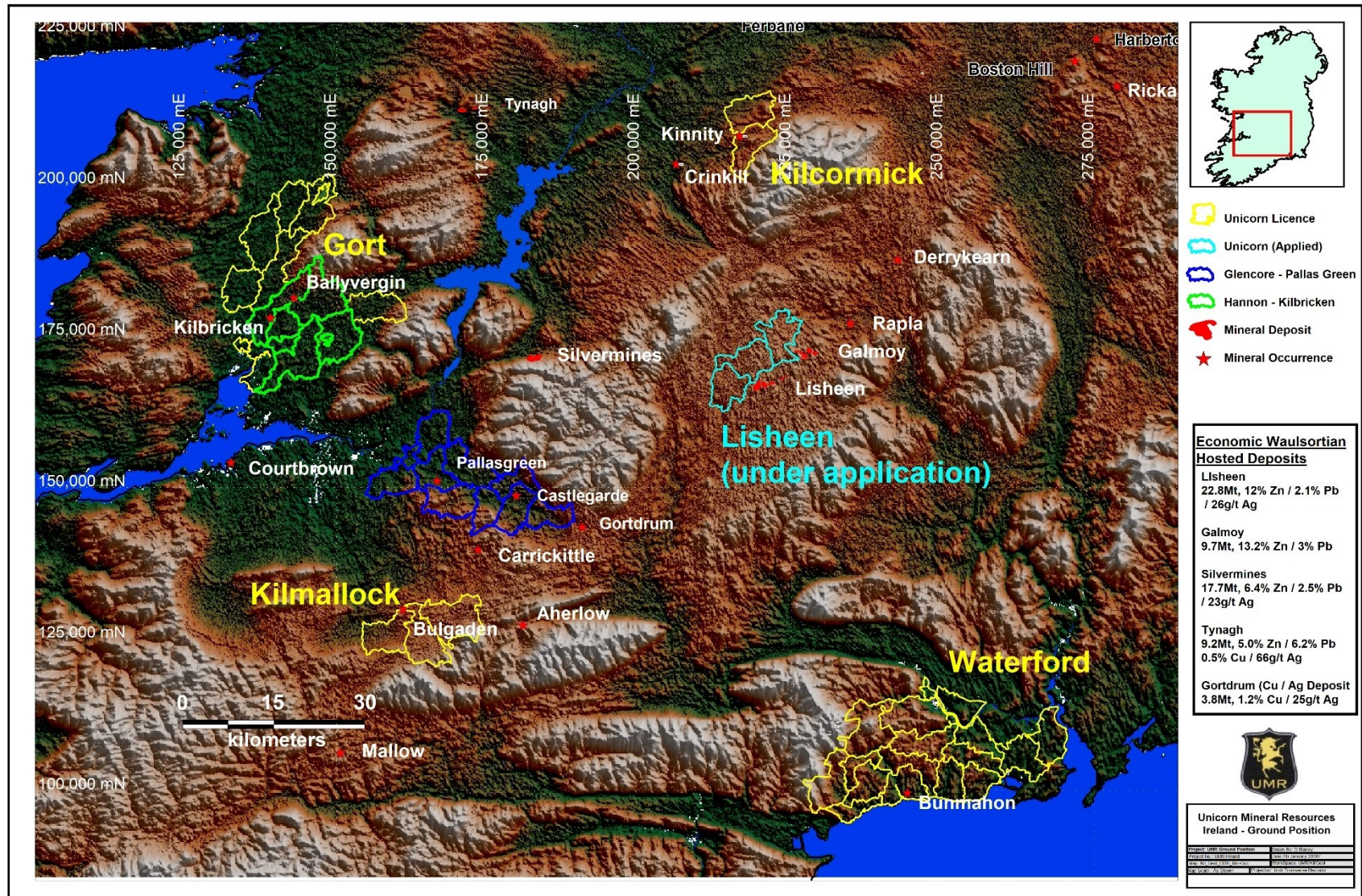
UMR Summary

- ❖ Zinc is at an inflection point demand is exceeding supply, situation is analogous to the 2006 price breakout
- ❖ Ireland is the world's leading zinc province, in terms of tonnes / km².
- ❖ 31 prospecting licences covering a surface area of 1,249km², divided into five contiguous blocks
- ❖ 3 prospecting licences under application contiguous with the Lisheen and Galmoy Deposits along the world famous Rathdowney Trend
- ❖ All of the licence blocks are positioned at highly prospective locations along regional mineralising trends close to known economic deposits.
- ❖ Highly significant zinc and lead sulphide mineralisation and alteration has been discovered on all licence blocks.
- ❖ Drill ready targets in areas with prospective geology and relatively shallow depths.



Unicorn Mineral Resources

Ground Position



Unicorn Mineral Resources

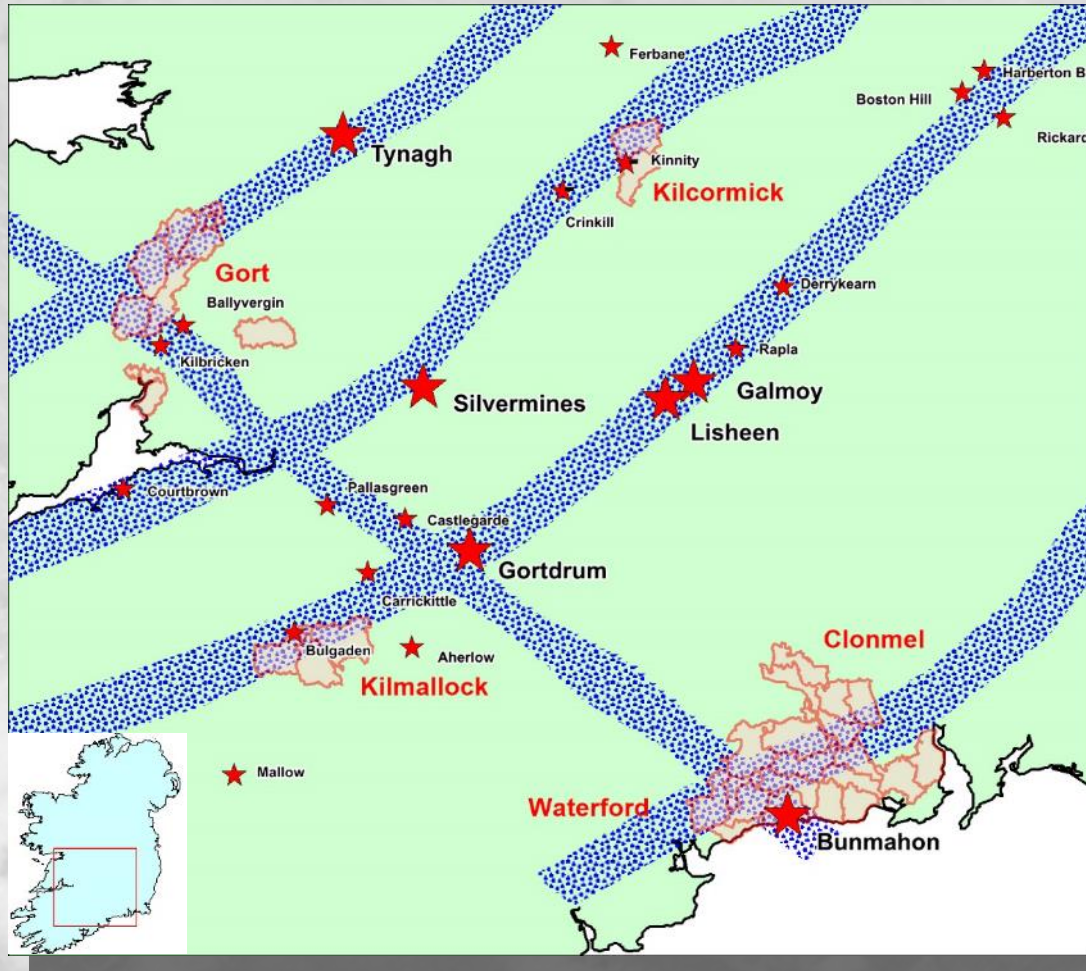
UMR - Prospecting Licence Status

| PL No. | Block | Surface Area (km2) | Issue Date | Report Date | Commitments | Expenditure to date | Balance |
|--------|------------|--------------------|------------|-------------|-------------|---------------------|-------------|
| 2860 | Kilcormick | 36.39 | 04-Jul-11 | 04-May-19 | €30,000 | €0.00 | €30,000.00 |
| 4057 | Kilcormick | 34.00 | 04-Jul-11 | 04-May-19 | €7,500 | €0.00 | €7,500.00 |
| 2895 | Gort | 42.4 | 16-Feb-16 | 16-Jan-20 | €15,000 | €0.00 | €15,000.00 |
| 3863 | Gort | 39.23 | 16-Feb-16 | 16-Jan-20 | €15,000 | €0.00 | €15,000.00 |
| 1952 | Gort | 46.81 | 06-Jul-11 | 06-May-19 | €30,000 | €0.00 | €30,000.00 |
| 3479 | Gort | 27.88 | 06-Jul-11 | 06-May-19 | €30,000 | €0.00 | €30,000.00 |
| 3693 | Gort | 41.36 | 08-Aug-12 | 08-Aug-20 | €20,000 | €0.00 | €20,000.00 |
| 4095 | Gort | 35.09 | 24-May-12 | 24-May-20 | €15,000 | €0.00 | €15,000.00 |
| 3641 | Gort | 59.58 | 26-Feb-18 | 26-Nov-19 | €10,000 | €0.00 | €10,000.00 |
| 405 | Waterford | 46.94 | 20-Mar-15 | 20-Jan-19 | €30,000 | €0.00 | €30,000.00 |
| 735 | Waterford | 43.76 | 20-Mar-15 | 20-Jan-19 | €30,000 | €0.00 | €30,000.00 |
| 2752 | Waterford | 47.06 | 20-Mar-15 | 20-Jan-19 | €30,000 | €0.00 | €30,000.00 |
| 2754 | Waterford | 29.63 | 20-Mar-15 | 20-Jan-19 | €30,000 | €0.00 | €30,000.00 |
| 3194 | Waterford | 49.02 | 20-Mar-15 | 20-Jan-19 | €30,000 | €0.00 | €30,000.00 |
| 3195 | Waterford | 40.87 | 20-Mar-15 | 20-Jan-19 | €30,000 | €0.00 | €30,000.00 |
| 3205 | Waterford | 32.74 | 20-Mar-15 | 20-Jan-19 | €30,000 | €0.00 | €30,000.00 |
| 3206 | Waterford | 38.62 | 20-Mar-15 | 20-Jan-19 | €30,000 | €0.00 | €30,000.00 |
| 3207 | Waterford | 28.46 | 20-Mar-15 | 20-Jan-19 | €30,000 | €0.00 | €30,000.00 |
| 3208 | Waterford | 32.79 | 20-Mar-15 | 20-Jan-19 | €30,000 | €0.00 | €30,000.00 |
| 3323 | Waterford | 50.4 | 05-Mar-15 | 05-Jan-19 | €30,000 | €0.00 | €30,000.00 |
| 3518 | Waterford | 32.86 | 05-Mar-15 | 05-Jan-19 | €30,000 | €0.00 | €30,000.00 |
| 3570 | Waterford | 40.13 | 05-Mar-15 | 05-Jan-19 | €30,000 | €0.00 | €30,000.00 |
| 3571 | Waterford | 36.4 | 20-Mar-15 | 05-Jan-19 | €30,000 | €0.00 | €30,000.00 |
| 3574 | Waterford | 42.01 | 05-Mar-15 | 05-Jan-19 | €30,000 | €0.00 | €30,000.00 |
| 3519 | Waterford | 17.17 | 05-Apr-17 | 04-Mar-19 | €2,500 | €0.00 | €2,500.00 |
| 1945 | Kilmallock | 40.15 | 29-Sep-16 | 29-Jul-20 | €15,000 | €0.00 | €15,000.00 |
| 3249 | Kilmallock | 42.57 | 29-Sep-16 | 29-Jul-20 | €15,000 | €0.00 | €15,000.00 |
| 3582 | Kilmallock | 46.98 | 29-Sep-16 | 29-Jul-20 | €15,000 | €0.00 | €15,000.00 |
| 754 | Lisheen | 35.09 | Under App | | | | |
| 2447 | Lisheen | 31.55 | Under App | | | | |
| 4056 | Lisheen | 35.6 | Under App | | | | |
| Total | | | | | €670,000.00 | €0.00 | €670,000.00 |



Unicorn Mineral Resources

UMR – Ground Position



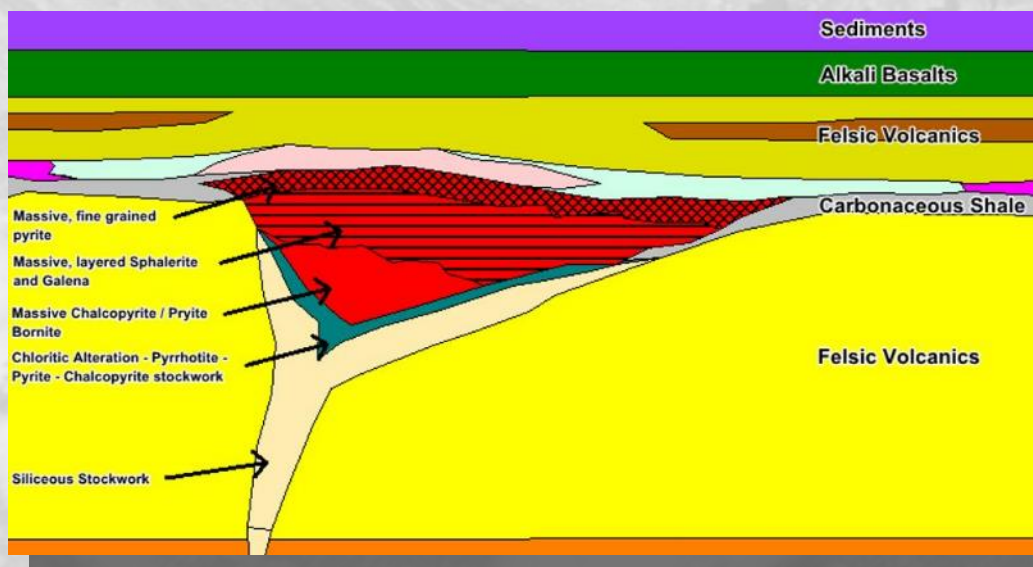
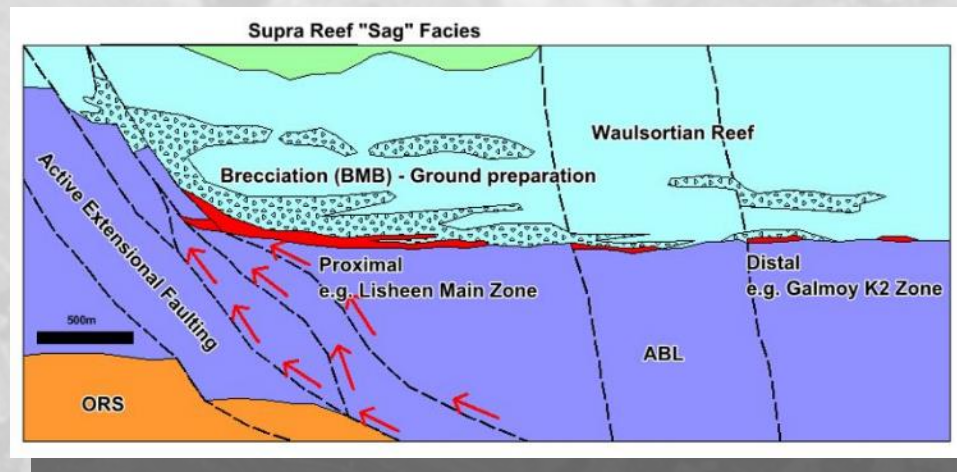
- ❖ Licence Blocks targeted along the major, regional mineralising Trends
- ❖ Targeting shallow (<300m) base of Waulsortian Reef, Massive Sulphide Mineralisation – analogous to Lisheen, Galmoy and Silvermines
- ❖ Significant mineral occurrences on or proximal to the UMR licence blocks
- ❖ Mineralised drillhole intersections on three of the five blocks



Unicorn Mineral Resources

UMR Target Models

- ❖ Carbonate hosted – Zn / Pb / Ag
- ❖ Strongly fault controlled
- ❖ Flat Lying, basal Waulsortian Reef, Stratiform / Stratabound
- ❖ Massive Pyrite, Sphalerite, Galena
- ❖ Multiple lenses “string of pearls” morphology



Waterford Block

- ❖ VHMS - Volcanics / Volcanics & sediments Zn / Pb / Cu / Ag / Au
- ❖ Productive rhyolites (felsic volcanics)
- ❖ Extensional basins
- ❖ Fault control / facies changes
- ❖ Thick massive sulphide bodies Pyrite, Sphalerite, Galena, Chalcopryite, Bornite, +/- Gold
- ❖ Associated feeder / stringer / alteration zones



Unicorn Mineral Resources

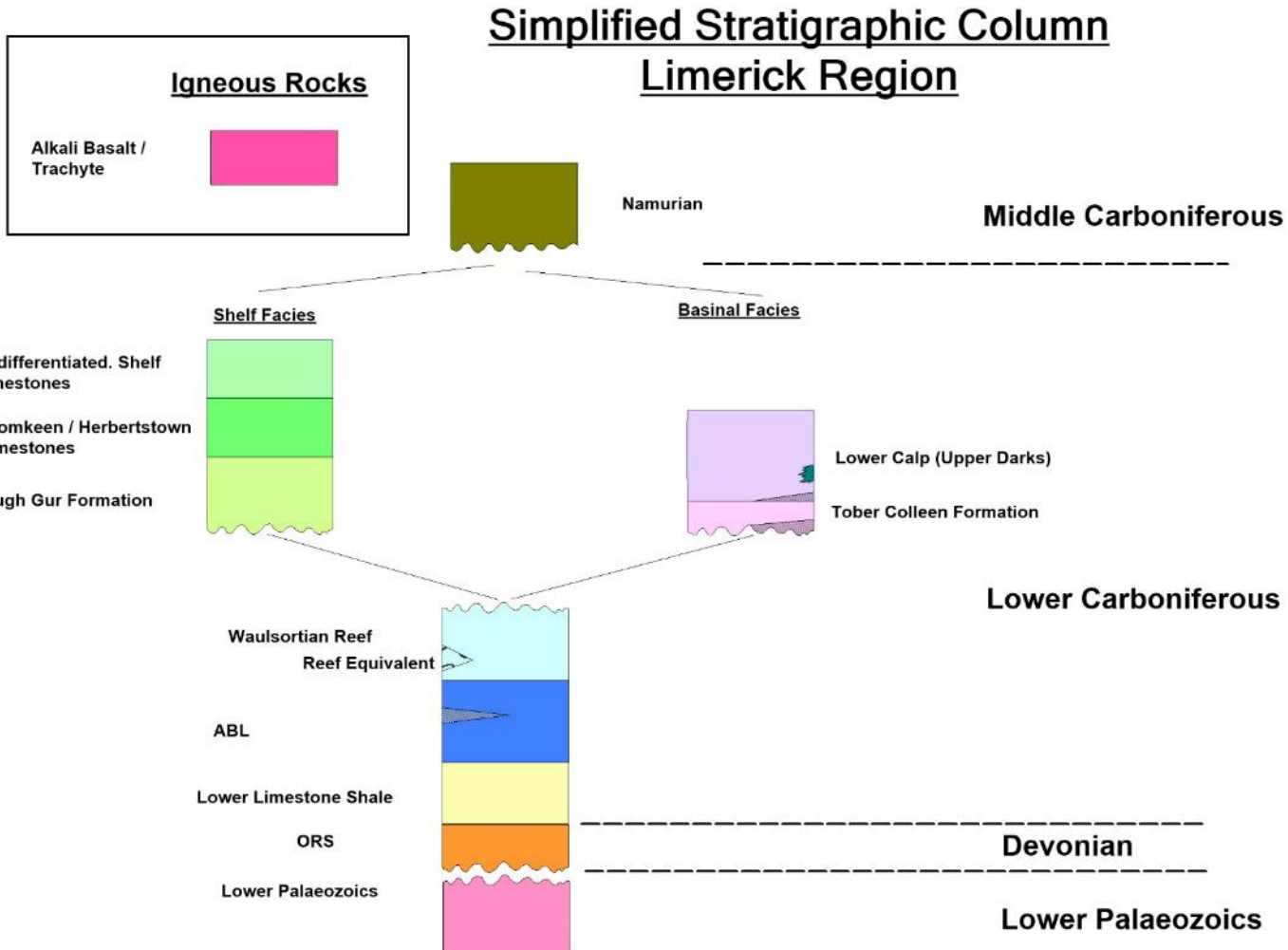
Kilmallock Block

| | |
|---------------------|------------------------------------------------------------------------------------------------------------------------------------------------------------------------------------------------------------------------------------------------------------------------------------------------------------------------------------------------------------------------------------------------------------------------------------------------------------------------------------------------------------------------------------------------------------------------------------------------------------------------------------------------------------------------------------------------------------------------------------------------------------------------------------------------------------------------------------------------------------------------------------------------------------------------------------------------------------------------------------------------------------------------------|
| Block | Three Contiguous Prospecting Licences, Surface Area 129.70km ² |
| Infrastructure | Well developed minor and regional class road network, south of the small town of Kilmallock. Land use is dominated by pasture land for grazing of sheep, cattle and horses. |
| Regional location | Located along the southwestern extension of the Rathdowney Mineralising Trend |
| Strategic Location | 20km South of the Pallas Green Zn / Pb Deposit (The largest undeveloped deposit in Ireland) and 25km southwest from the Gortdrum Cu/Ag Deposit. |
| Target | Base of Waulsortian Reef - Carbonate Hosted, Zinc / Lead Massive Sulphides – relatively shallow c.180 – 300m. |
| Geological Setting | Southern side of the Limerick Basin in a region with an extensive, well developed, Waulsortian Reef host lithology. Structurally complex with a strong northwest-southeast and east-west grain, highly analogous to Pallas Green. Well developed basal Waulsortian Reef breccias, essential ground preparation for carbonate hosted massive sulphide mineralisation. Geology is well constrained by historic, shallow stratigraphic drilling |
| Significant Results | <p>Basal Waulsortian Reef hosted, secondary, oxide deposit was found at Ballycullane. Discovered in the 1970's by soil sampling and follow up drilling. BC3 intersected 1.5m grading 13% Zn; BC4 intersected 5.0m grading 20% Zn; BC5 intersected 3.0m grading 11% Zn and BC6 intersected 3.0m grading 13% Zn</p> <p>Historic Stratigraphic Diamond Drilling has been used to develop a robust geological and structural model.</p> <p>Primary, base of Waulsortian Reef hosted, massive sulphide mineralisation was discovered by Boliden at Bulgaden. Best Results include:</p> <p>3249-14: 6.00m, grading 10.43% Zn / 1.78% Pb 3249-16: 12.00m, grading 4.29% Zn / 0.91% Pb 3249-18: 2.40m, grading 12.76% Zn / 2.0% Pb 3249-19: 5.30m, grading 9.55% Zn / 2.09% Pb and 3.80m grading 14.66% Zn / 4.82% Pb 3249-24: 10.50m, grading 8.34% Zn / 1.52% Pb (including 3.40m grading 20.62% Zn / 3.43% Pb) 3249-25: 4.50m grading 16.53% Zn / 1.25% Pb</p> |



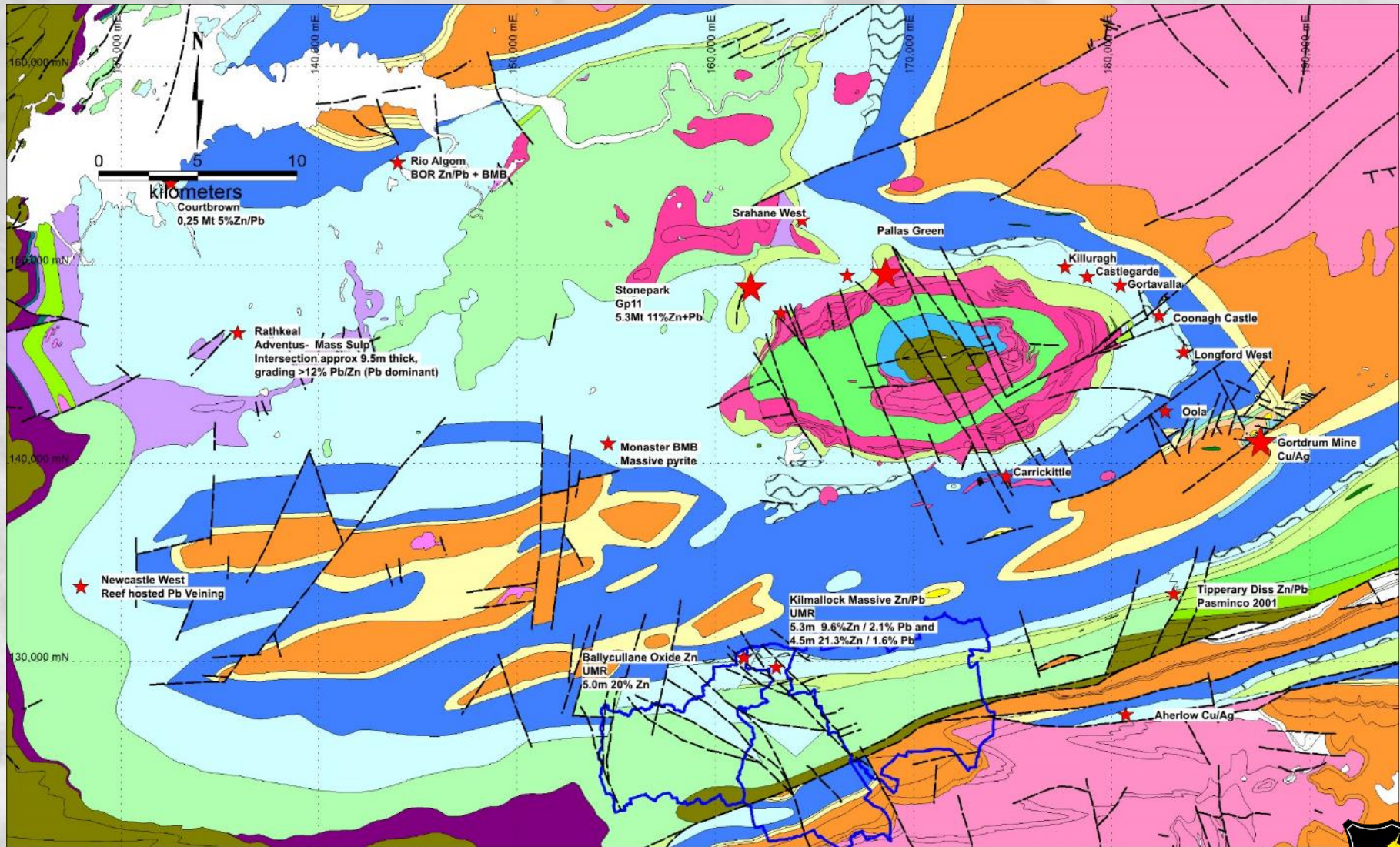
Unicorn Mineral Resources

Kilmallock



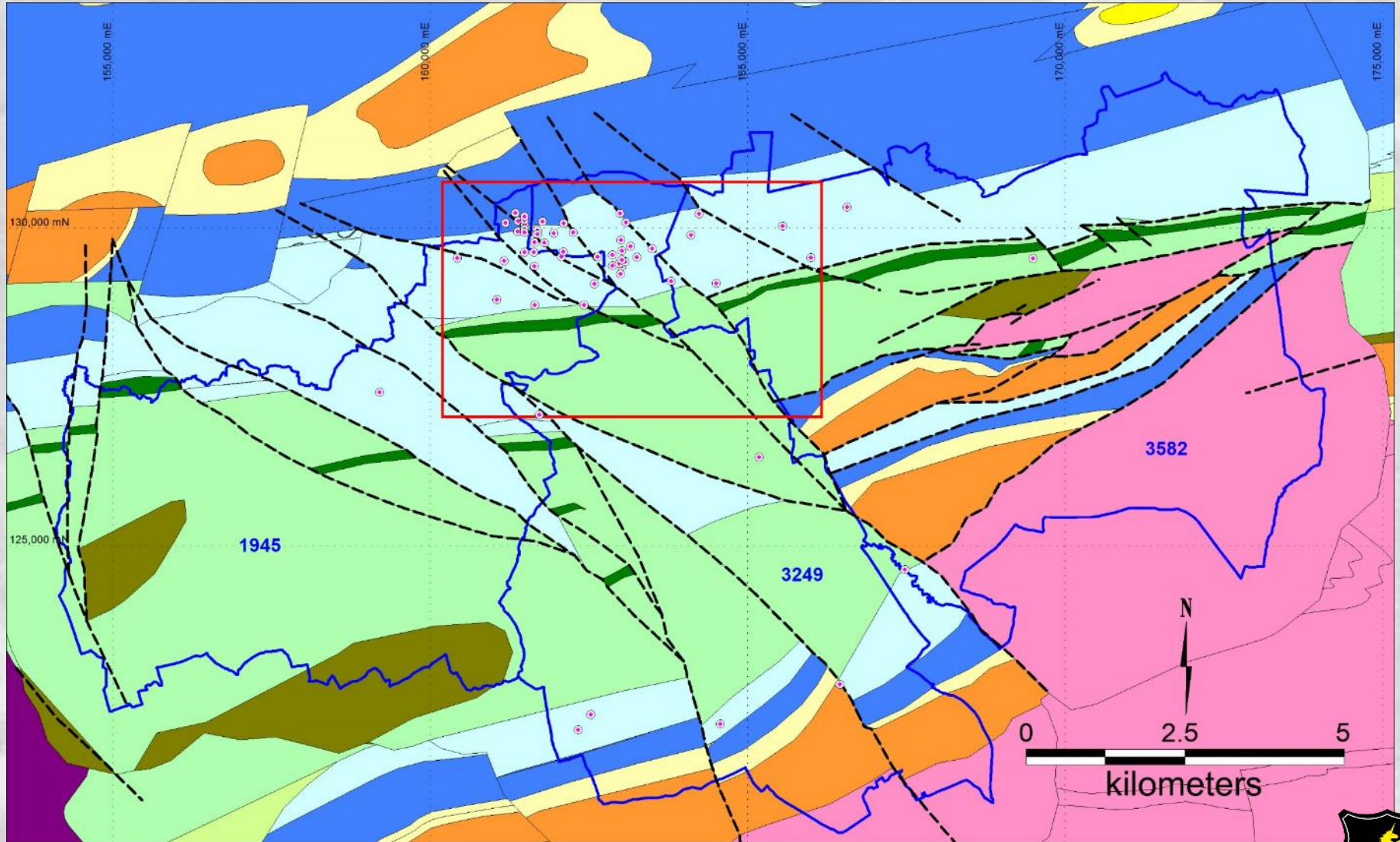
Unicorn Mineral Resources

Kilmallock Block - Limerick Regional Setting



Unicorn Mineral Resources

Kilmallock - Geology / Drilling



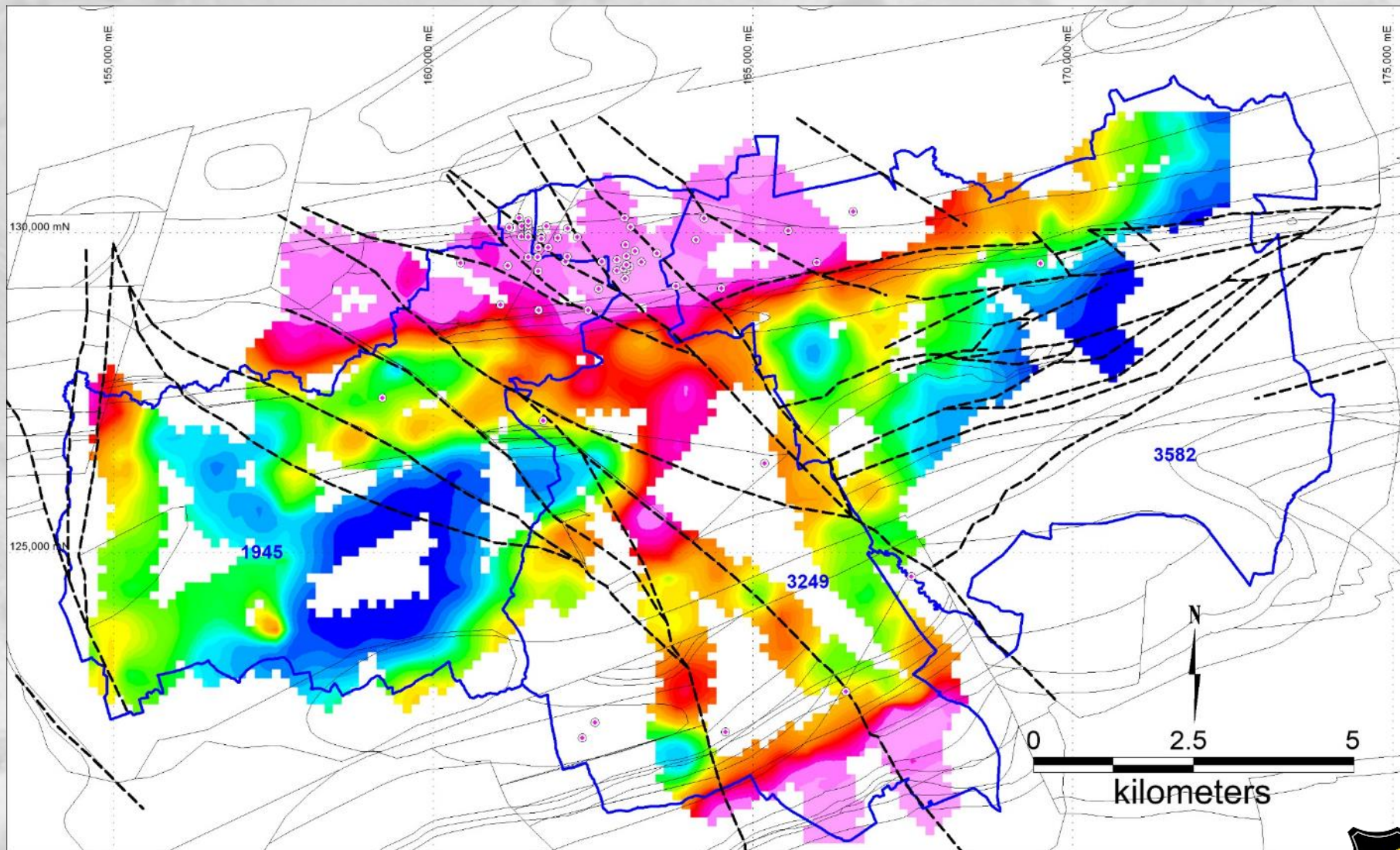
Unicorn Mineral Resources

Kilmallock Topography, DDH, Geology



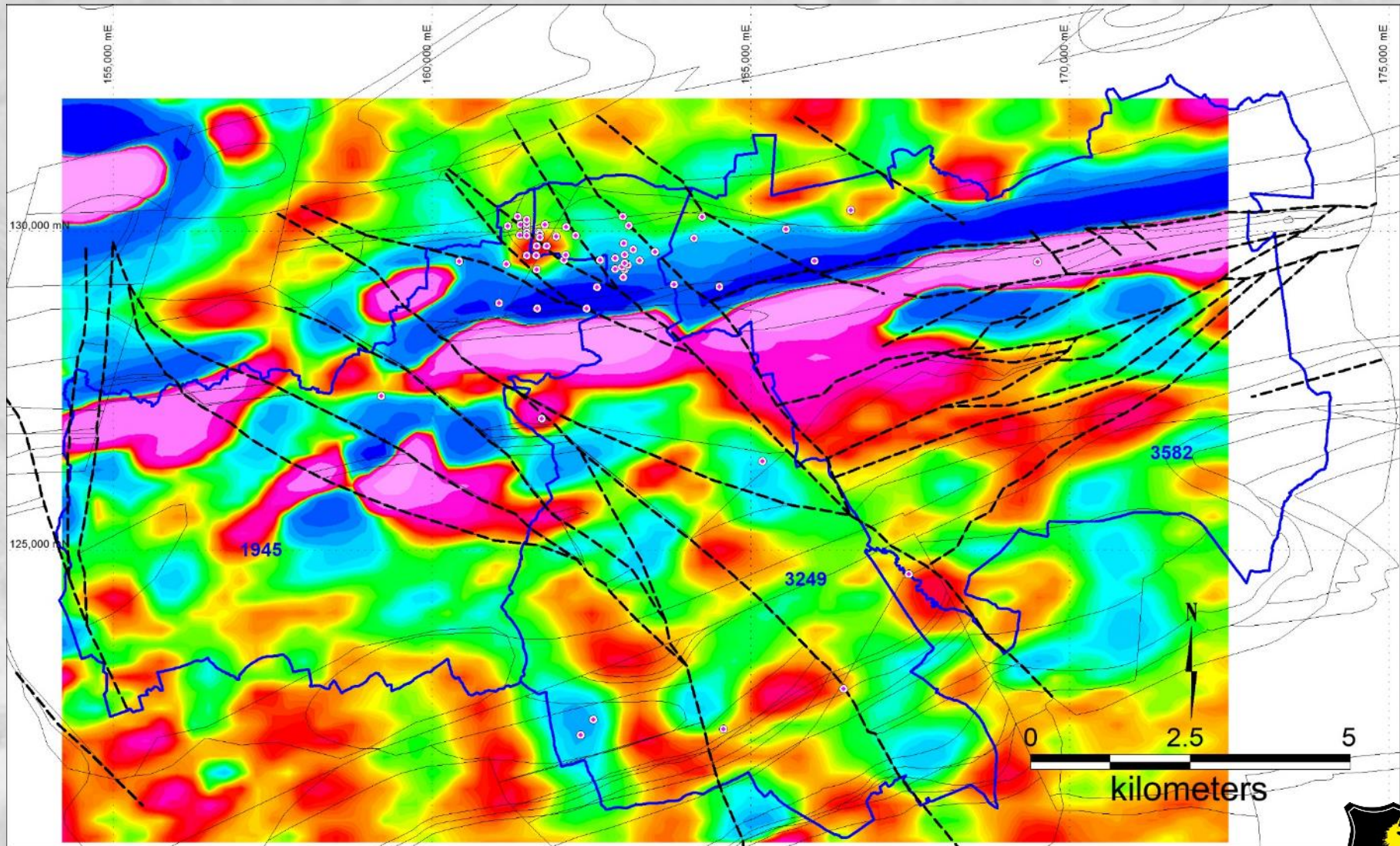
Unicorn Mineral Resources

Kilmallock Roadside Gravity



Unicorn Mineral Resources

Kilmallock – Regional Magnetics



Unicorn Mineral Resources

Kilmallock Block – Intersections

Ballycullane (Oxide Zone)

BC3 1.5m grading 13% Zn

BC4 5.0m grading 20% Zn

BC5 3.0m grading 11% Zn

BC6 3.0m grading 13.% Zn

Bulgaden (Sulphide Zone)

3249-14 6.0m grading 10.43% Zn / 1.78% Pb

3249-16 12.0m grading 4.29% Zn / 0.91% Pb / 23.55g/t Ag

3249-18 2.4m grading 12.76% Zn / 2.0% Pb / 34.4g/t Ag

3249-19 5.3m grading 9.55% Zn / 2.09% Pb / 27.26g/t Ag

3249-19 3.8m grading 14.66% Zn / 4.82% Pb / 133.79g/t Ag

3249-24 10.5m grading 8.34% Zn / 1.52% Pb / 61.98g/t Ag

including 1.2m grading 48.94% Zn / 7.23% Pb / 204g/t Ag

3249-25 4.5m grading 16.53% Zn / 1.25% Pb / 57.12g/t Ag



Unicorn Mineral Resources

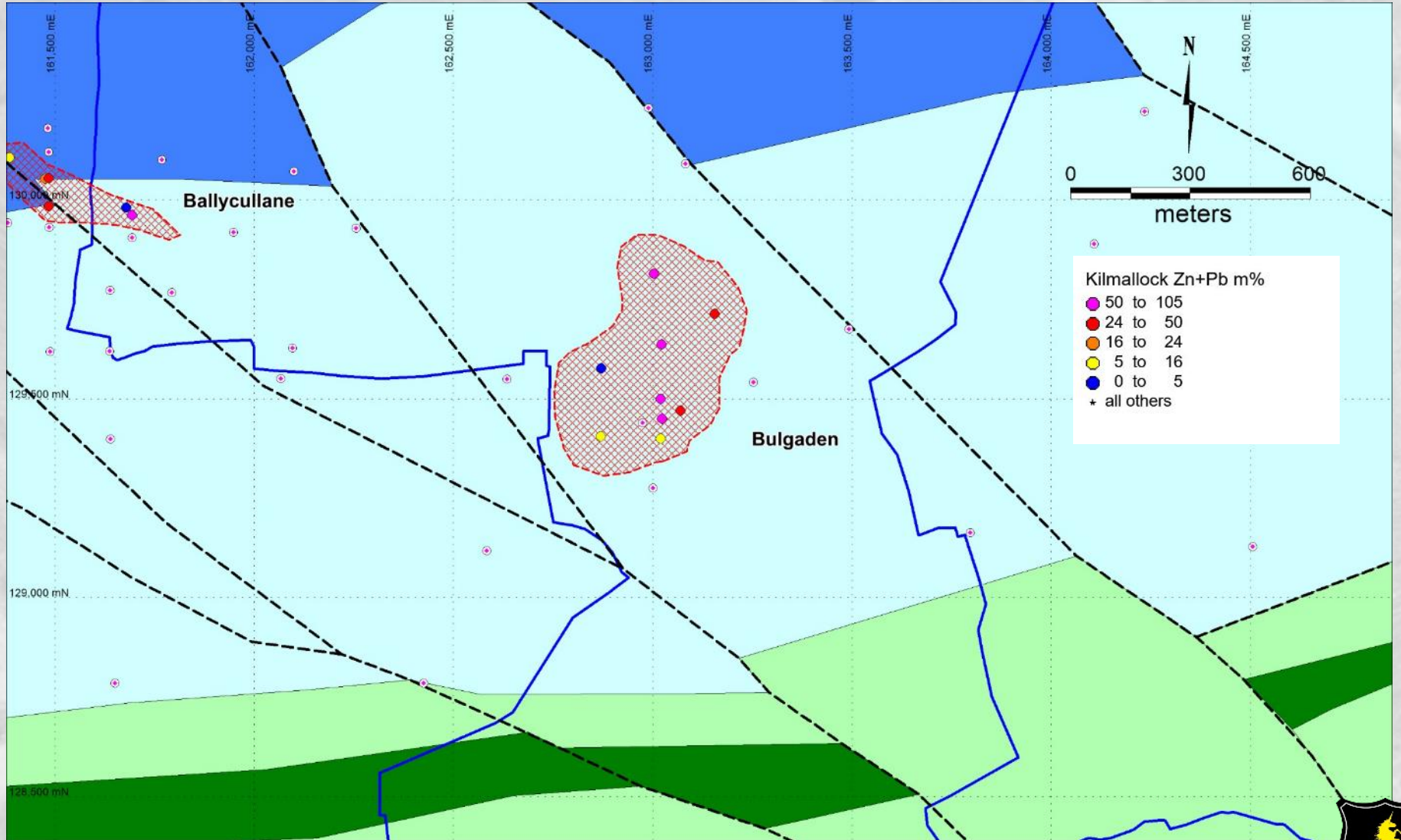
Kilmallock Composites

| Hole_ID | East | North | Thickness | Zn% | Pb % | Zn+Pbm% |
|---------|-----------|-----------|-----------|-------|-------|---------|
| BC-1 | 161385.20 | 130106.40 | 1.5 | 3.5 | | 5.25 |
| BC-3 | 161475.10 | 130053.40 | 1.5 | 13 | | 19.50 |
| BC-4 | 161692.90 | 129961.80 | 5 | 20 | | 100.00 |
| BC-5 | 161483.20 | 130054.00 | 3 | 11 | | 33.00 |
| BC-6 | 161484.30 | 129983.90 | 3 | 13 | | 39.00 |
| 3249-9 | 161678.00 | 129980.00 | 0.05 | 33 | 0.538 | 1.68 |
| 3249-14 | 163022.00 | 129637.00 | 6 | 10.43 | 1.78 | 73.26 |
| 3249-15 | 162871.00 | 129577.00 | 2.3 | 1.06 | 0.75 | 4.16 |
| 3249-16 | 163003.00 | 129814.00 | 12 | 4.29 | 0.91 | 62.40 |
| 3249-18 | 163155.00 | 129714.00 | 2.4 | 12.76 | 2 | 35.42 |
| 3249-19 | 163022.99 | 129450.21 | 6 | 3.06 | 0.91 | 23.82 |
| 3249-19 | 163022.99 | 129450.21 | 5.3 | 9.55 | 2.09 | 61.69 |
| 3249-19 | 163022.99 | 129450.21 | 3.8 | 14.66 | 4.82 | 74.02 |
| 3249-21 | 162869.42 | 129405.85 | 1.5 | 3.56 | 0.68 | 6.36 |
| 3249-23 | 163020.00 | 129400.01 | 3 | 3.61 | 0.76 | 13.11 |
| 3249-24 | 163068.98 | 129470.05 | 10.5 | 8.34 | 1.52 | 103.53 |
| 3249-24 | 163068.98 | 129470.05 | 3 | 9.33 | 1.77 | 33.30 |
| 3249-25 | 163020.00 | 129500.00 | 4.5 | 4.37 | 1 | 24.17 |
| 3249-25 | 163020.00 | 129500.00 | 4.5 | 16.53 | 1.25 | 80.01 |



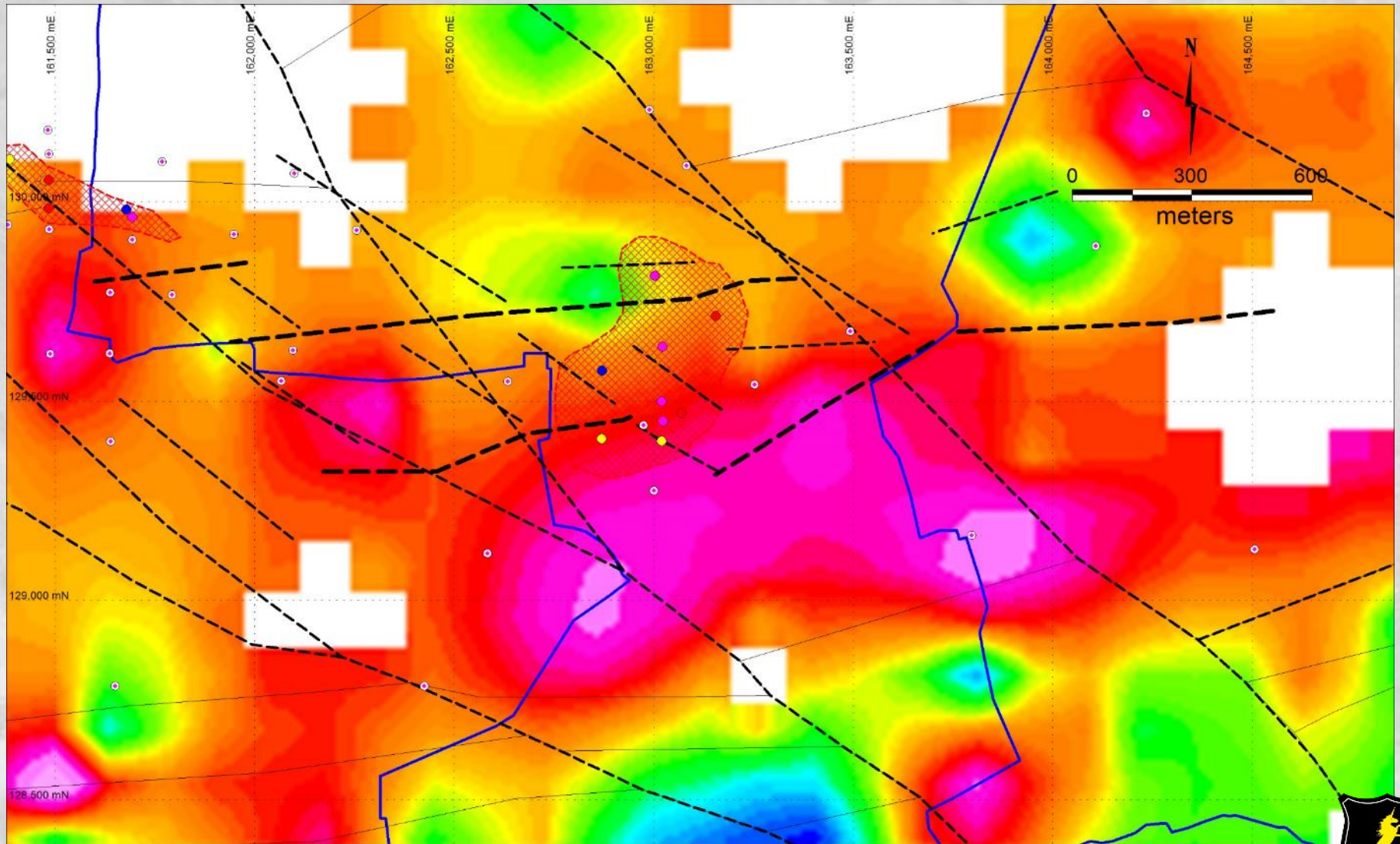
Unicorn Mineral Resources

Kilmallock – Bulgaden / Ballycullane



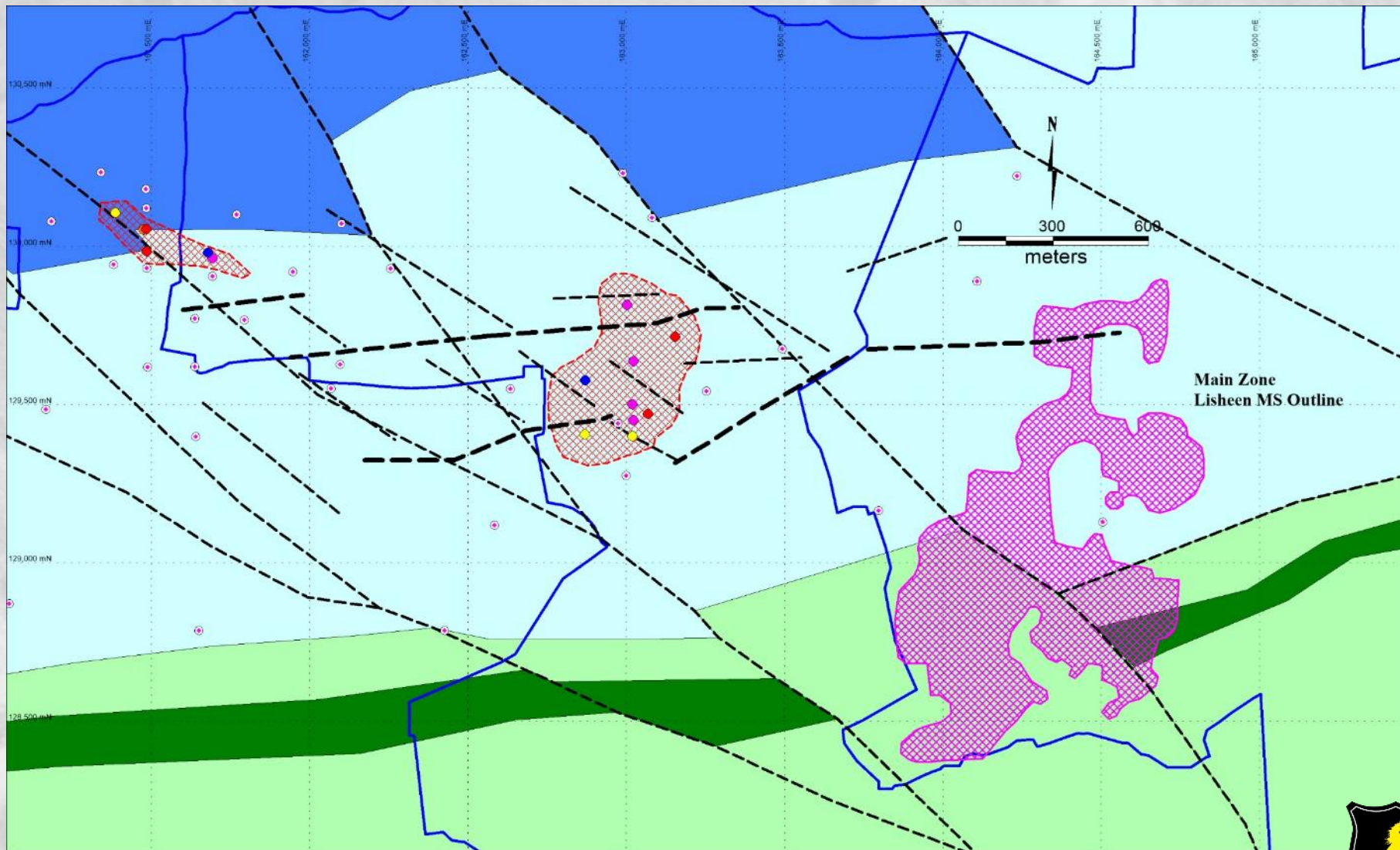
Unicorn Mineral Resources

Kilmallock – Gradient Array IP (Res)



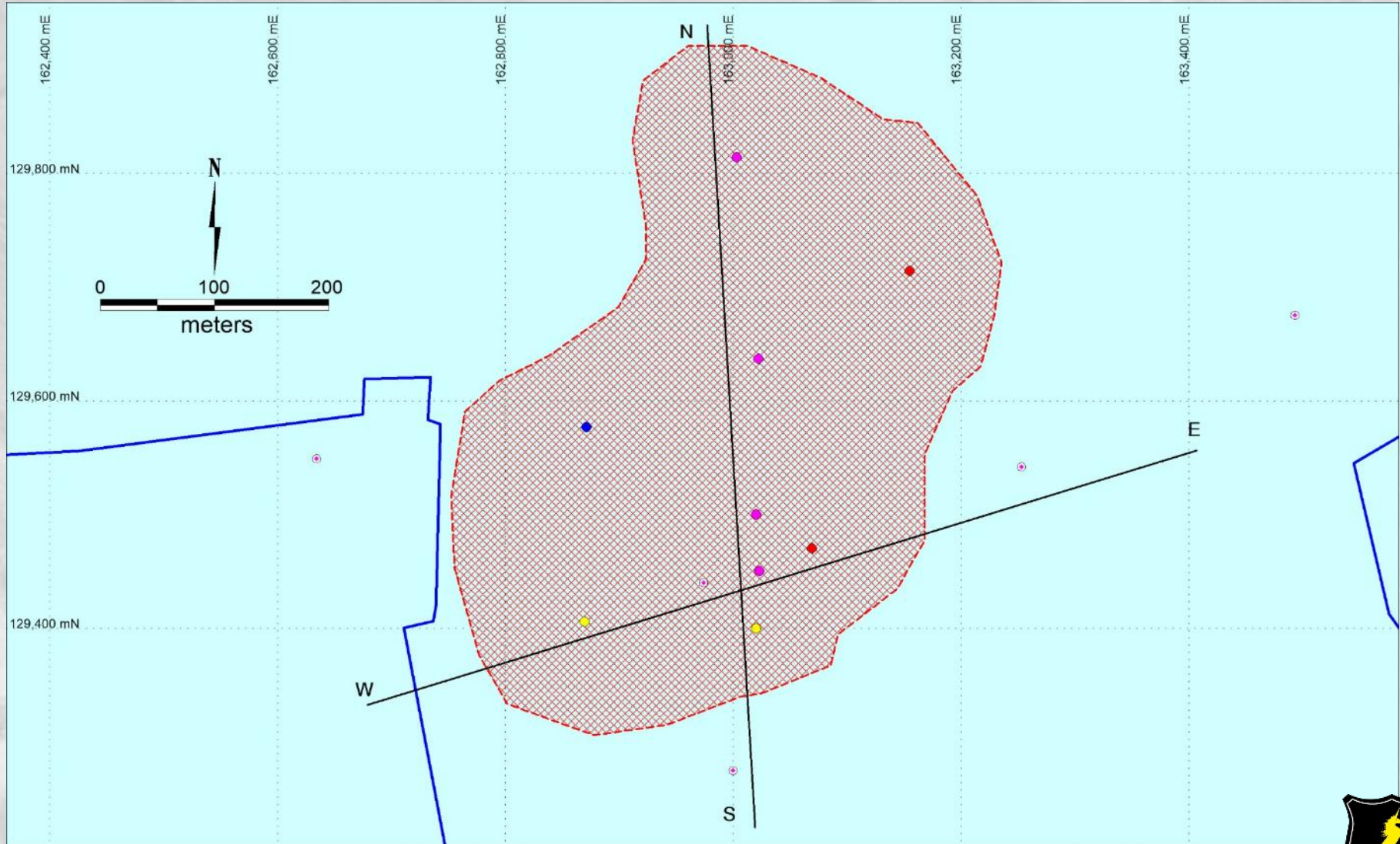
Unicorn Mineral Resources

Kilmallock Target Size Comparison 12Mt



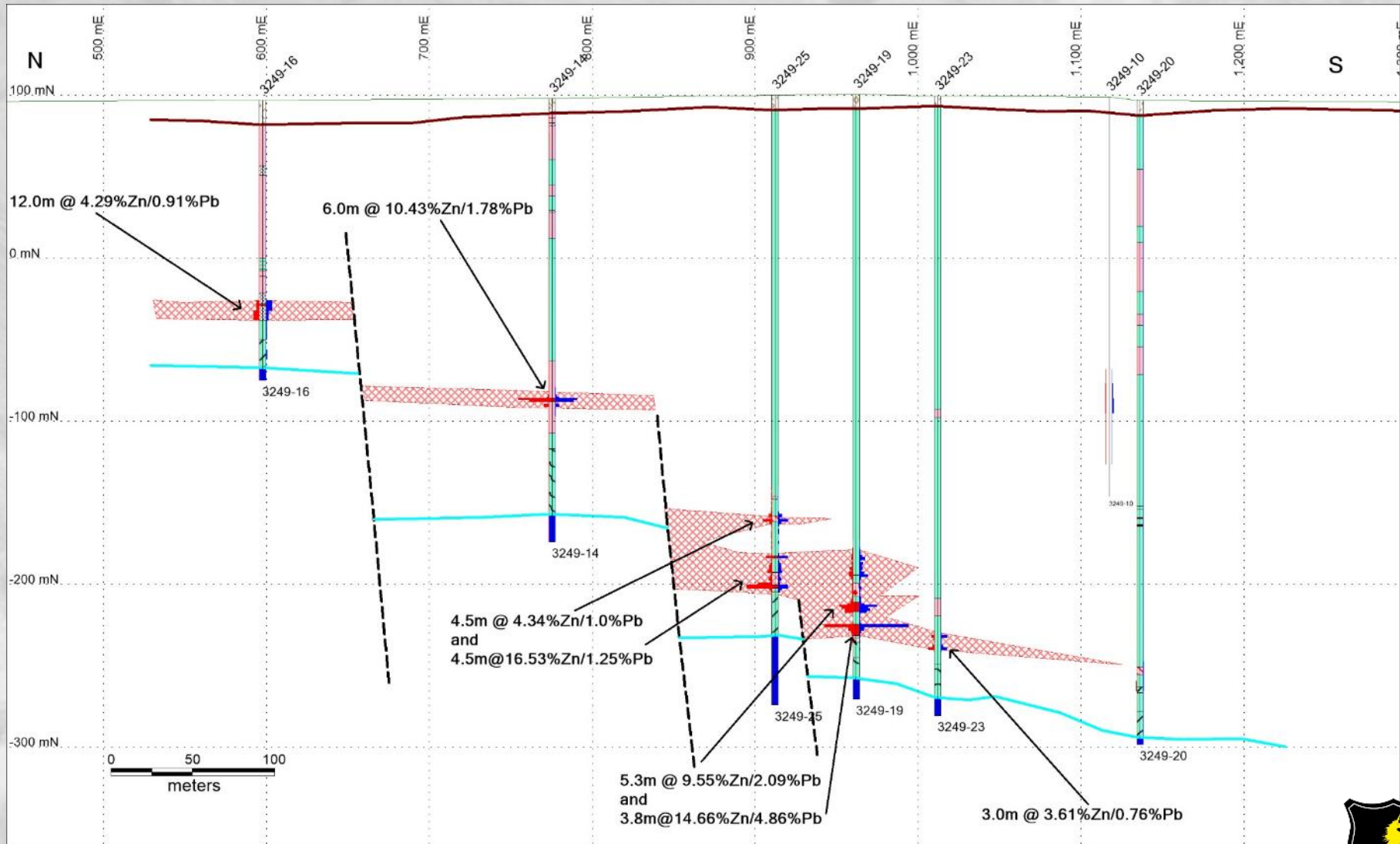
Unicorn Mineral Resources

Kilmallock



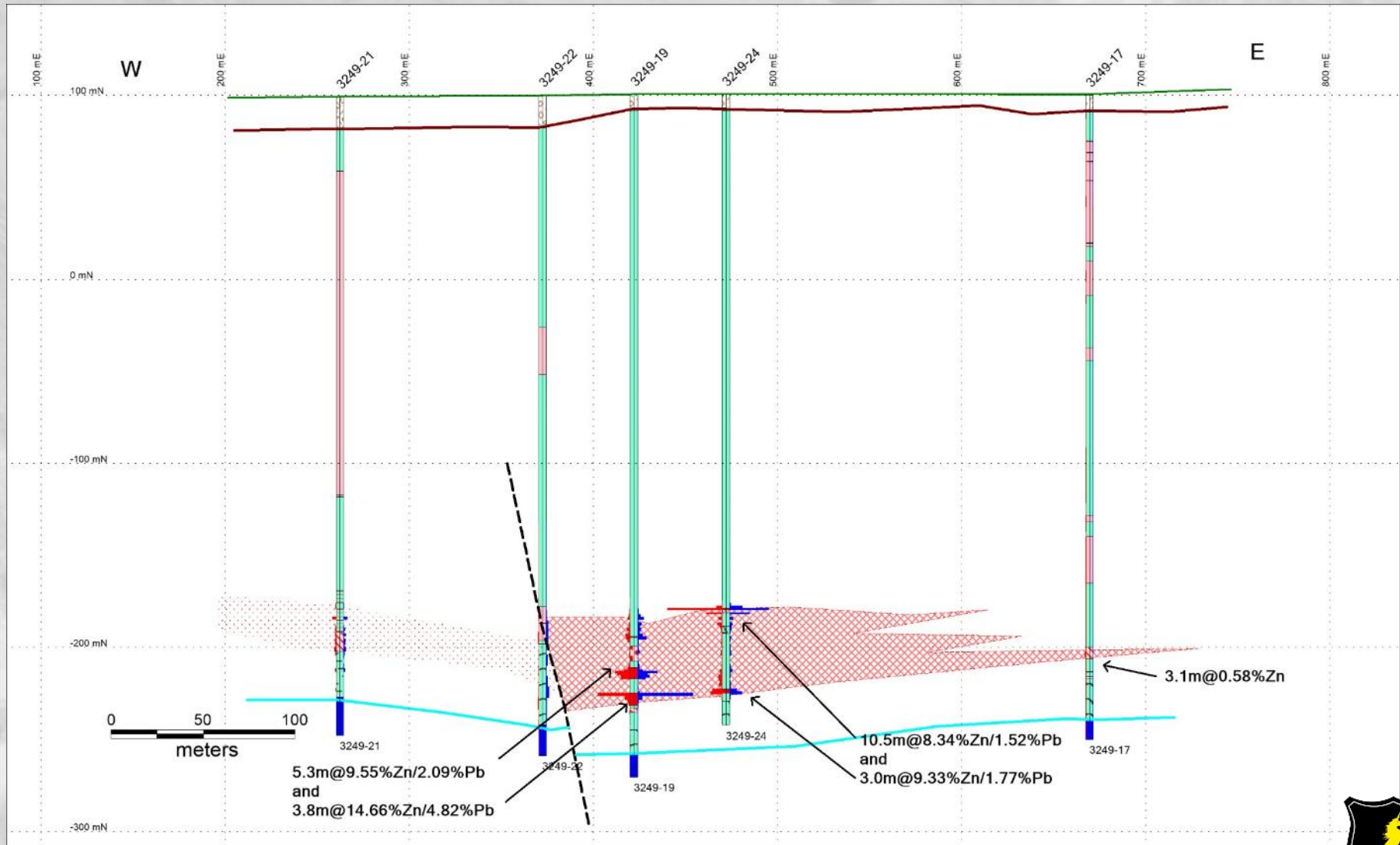
Unicorn Mineral Resources

Kilmallock N-S Section



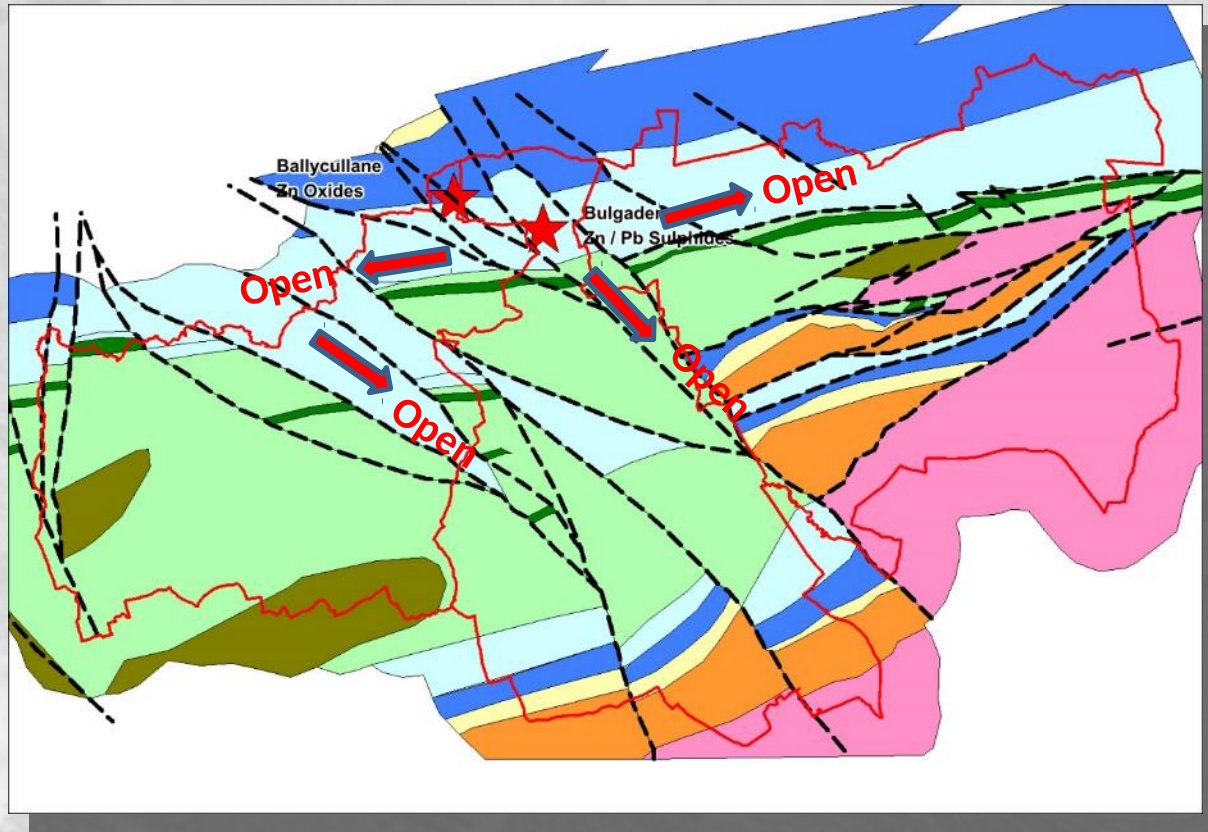
Unicorn Mineral Resources

Kilmallock E-W Section



Unicorn Mineral Resources

Kilmallock Block



- ❖ Area is remarkably untested given the style, grade and thickness of mineralisation
- ❖ Potential to extend and develop known mineralised bodies
- ❖ Potential to discover new mineralised zones
- ❖ Aggressive drilling campaign required to fully assess the potential of the block



Unicorn Mineral Resources

Waterford Block

| | |
|---------------------|-----------------------------------------------------------------------------------------------------------------------------------------------------------------------------------------------------------------------------------------------------------------------------------------------------------------------------------------------------------------------------------------------------------------------------------------------------------------------------------------------------------------------------------------------------------------------------------------------------------------------------------------------------------------------------------------------------------------------------------------------------------------------------------------------------------------------------------------------------------------------------------------------------------------------------------------------------------------------------------------------------------------------------------------------------------------------------------------------------------------------------------------------------------------------------------------------------------------------------------------------------------------------------------------------------------------------------------------------------|
| Block | Sixteen Contiguous Prospecting Licences, Surface Area 608.86km ² |
| Infrastructure | Well developed minor and motorway class road network. South and west of the major regional City of Waterford. Port facilities at Waterford and New Ross, located 15km northeast of the Licence Block. Extensive copper workings and occurrences form part of Copper Coast Geopark. |
| Regional location | Located along the southern extension of the Avoca / Parys Mountain Mineralising Trend. In a region of Ordovician / Silurian aged bimodal volcanics and metasediments. |
| Strategic Location | The historic Bunmahon Copper mine is located within the licence block and outcrops on the coast. Between 1826 and 1879, official records note that c.211,000 tonnes of copper metal was produced from Bunmahon. |
| Target | Volcanogenic Hosted Massive Sulphide deposits, Sediment Hosted Deposits and Shear Hosted Gold deposits |
| Geological Setting | Ordovician aged bimodal (basic - acidic) volcanics, interdigitating with metasediments overlain by Silurian aged sediments. Depositional environment is an Island Arc / Back Arc setting. Located along strike from major mining camps; Avoca and Parys Mountain to the east / northeast and Bathurst (New Brunswick) to the west (pre-Atlantic opening). Clear evidence of large scale active faulting and regional subsidence. Crustal thinning, basin development, high heat flow and alkali basalt extrusives. Nb / Zr plots confirm the prospectivity of the acid volcanics (rhyolites). |
| Significant Results | <p>Mapping has confirmed that the region hosts prospective stratigraphy for the target deposit types.</p> <p>Very little modern exploration has been carried out. The last significant work was carried out by Aquitaine in the early 1980's. Discussions with Aquitaine personnel confirm that the ground was surrendered because of internal company politics and the potential of the Waterford region was untested.</p> <p>UMR identified that the geological model for the region was not fit for purpose and have, in partnership with the Geological Survey of Ireland, recently carried out an Airborne Magnetics, EM and Radiometrics survey. The results of which will be used to more effectively target areas of significant potential.</p> <p>Historic diamond drilling is quite limited, given the scale of the region. The results of historic diamond drilling confirm that there is significant potential for VHMS and SEDEX mineralisation in this region with stringers and lenses of low grade massive sulphides intersected but not followed up.</p> <p>UMR has carried out detailed Lithogeochemical and deep overburden sampling supported by ground geophysics to confirm and extend historic work. The results have developed and refined targets, bringing them to stage where they are ready for a drilling campaign</p> |



Unicorn Mineral Resources

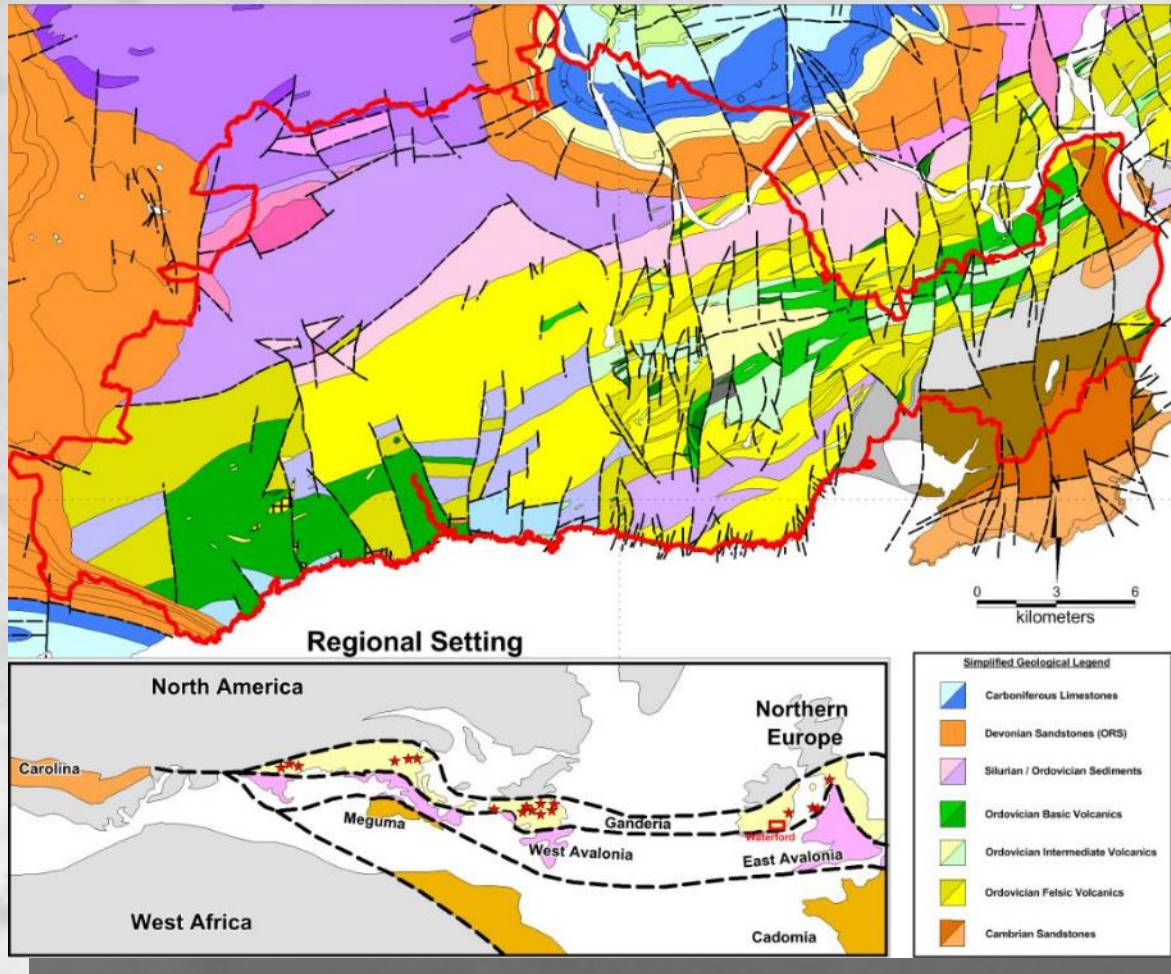
Waterford Block – Targeting Rational

- 1. Located along the Duncannon – Ribband Mineralising Trend.**
- 2. Prospective geology, Ordovician aged bimodal volcanism deposited in an Island Arc / Back Arc setting.**
- 3. Located along strike from major mine camps. Avoca and Parys Mountain deposits to the northeast and Buchans (Newfoundland), Bathurst (New Brunswick) to the west (on the other side of the Atlantic).**
- 4. Clear evidence of large scale active faulting that controlled regional subsidence and basin development.**
- 5. Mineral occurrences of Zn / Pb / Cu and Massive Pyrite hosted within Felsic volcanics.**
- 6. Relatively poorly explored – very little modern exploration, regional geochemistry and some drilling in the late 1970's / early 1980's.**
- 7. Recent airborne geophysical survey completed as part of the Regional Tellus Programme – UMR have part funded.**
- 8. Mapping / Prospecting, litho geochemistry, magnetic susceptibility, DOB, gold panning and gravity surveying has been recently carried out.**



Unicorn Mineral Resources

Waterford Block

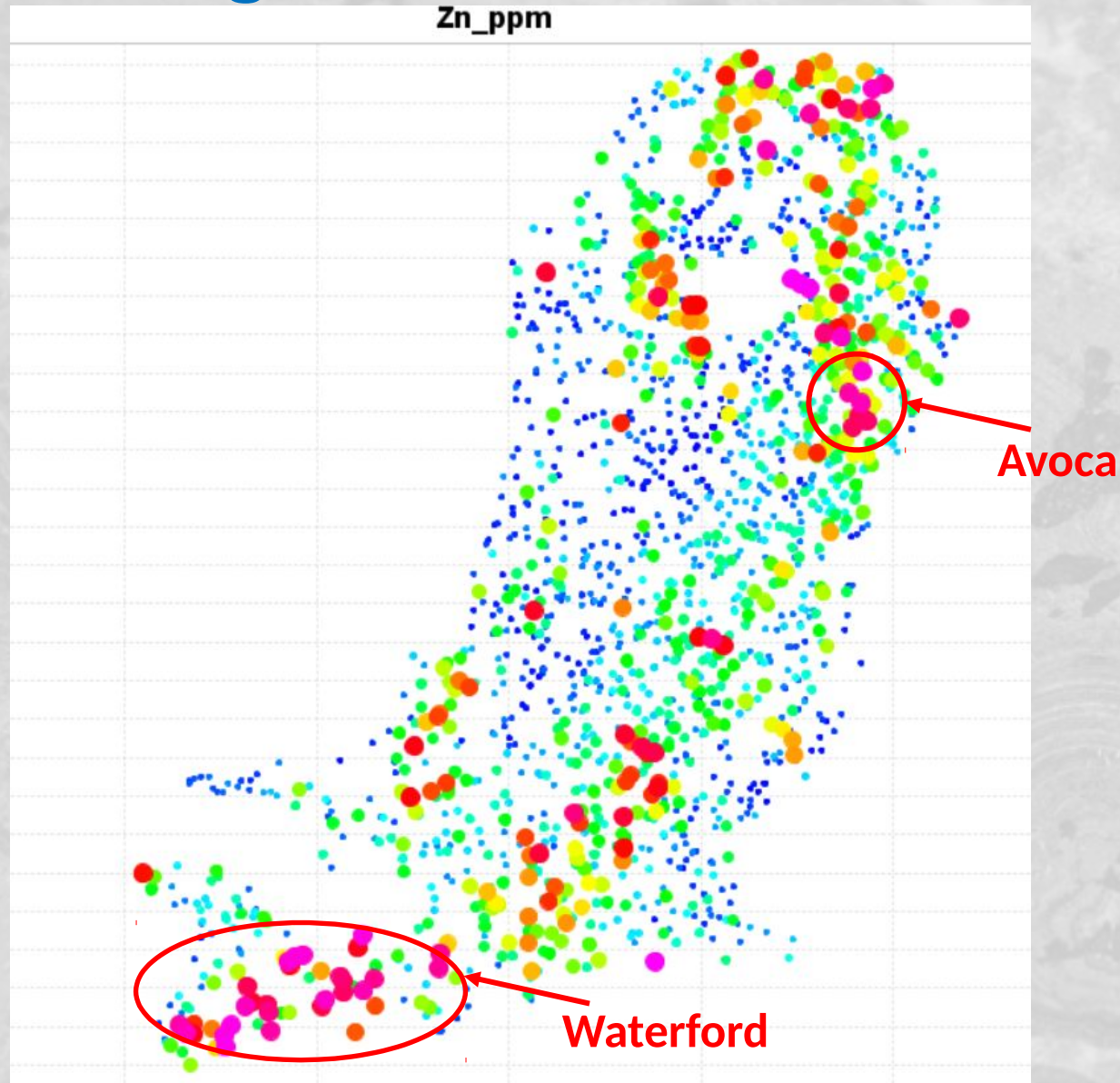


- ❖ Bimodal Ordovician Volcanics deposited in an extensional Arc environment
- ❖ Numerous Zn / Pb / Cu mineral occurrences
- ❖ Along strike from significant VHMS camps to the northeast and across the Atlantic to the west.
- ❖ Poorly explored, due to a variety of non-technical reasons



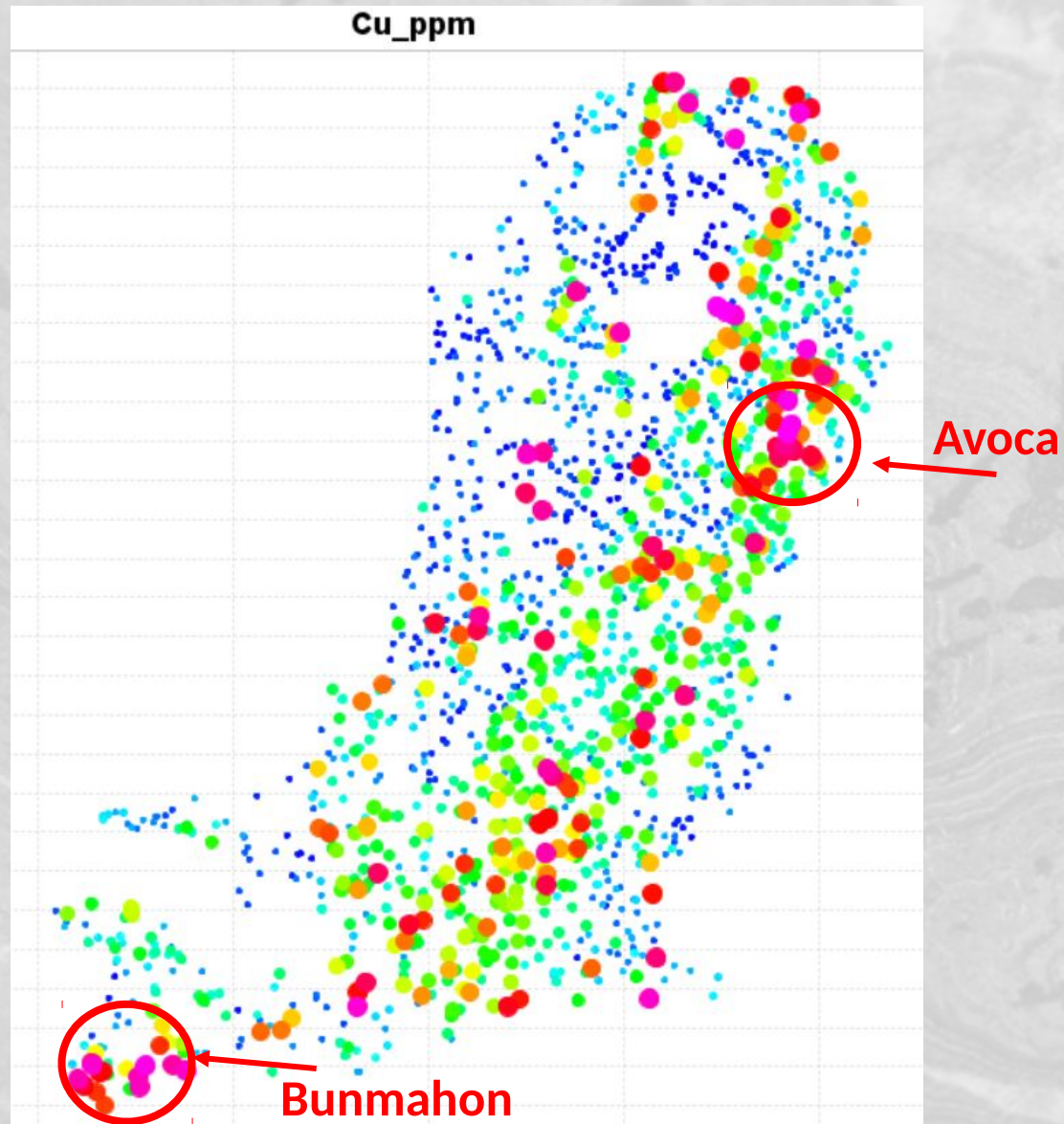
Unicorn Mineral Resources

Waterford – Regional Geochemical Setting Zn



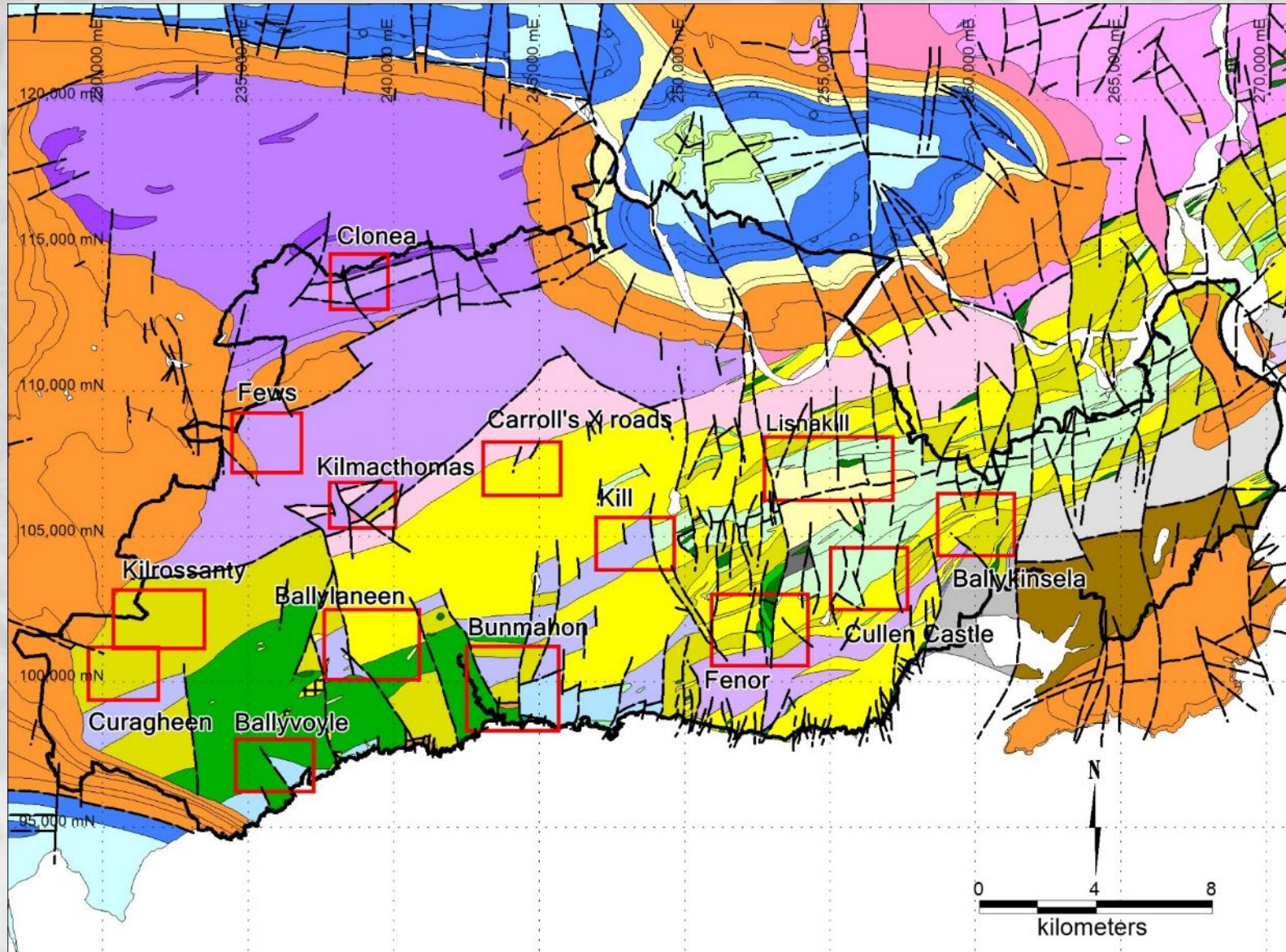
Unicorn Mineral Resources

Waterford – Regional Geochemical Setting Cu



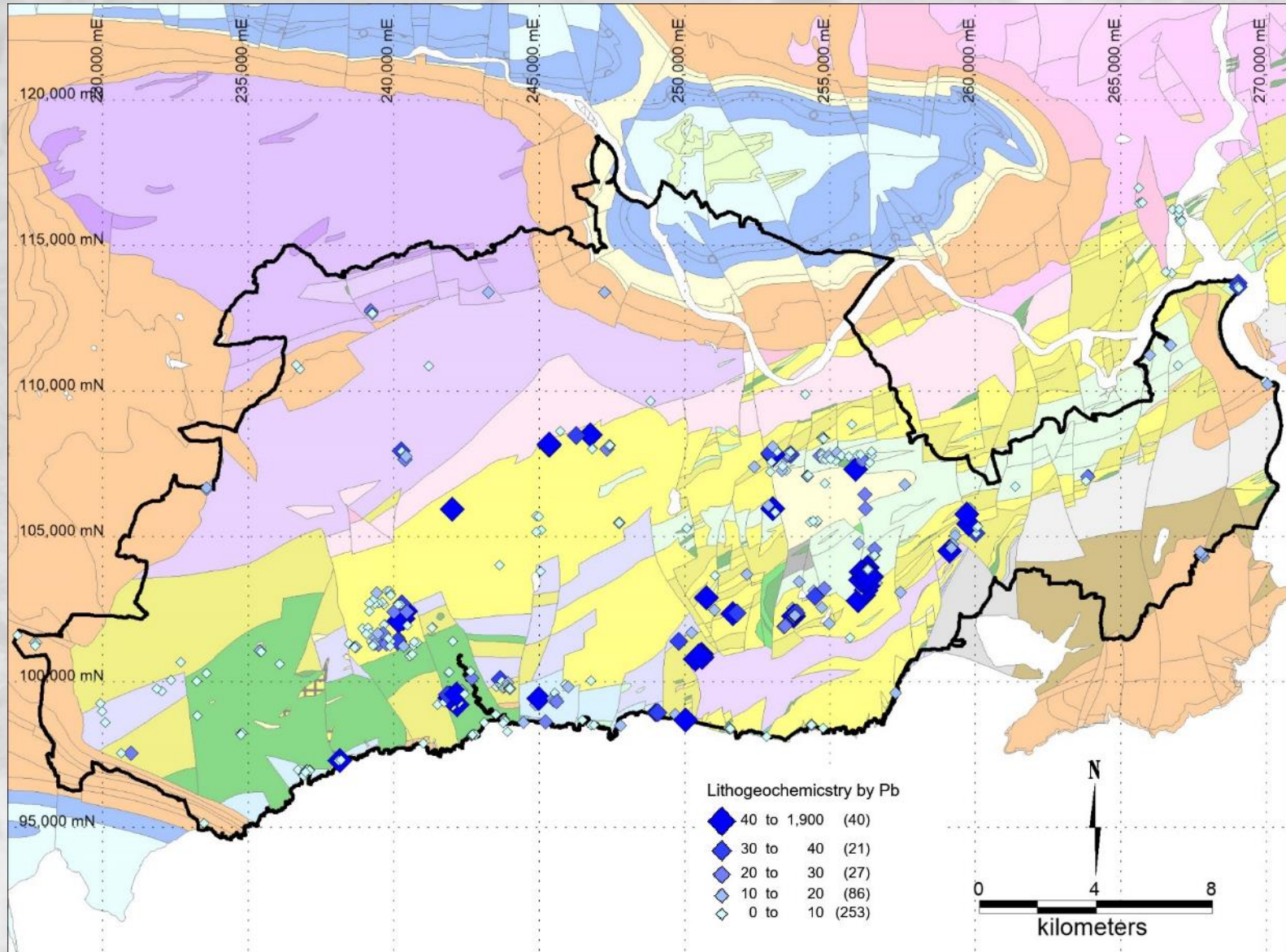
Unicorn Mineral Resources

Waterford Geology / PL's / Target Zones



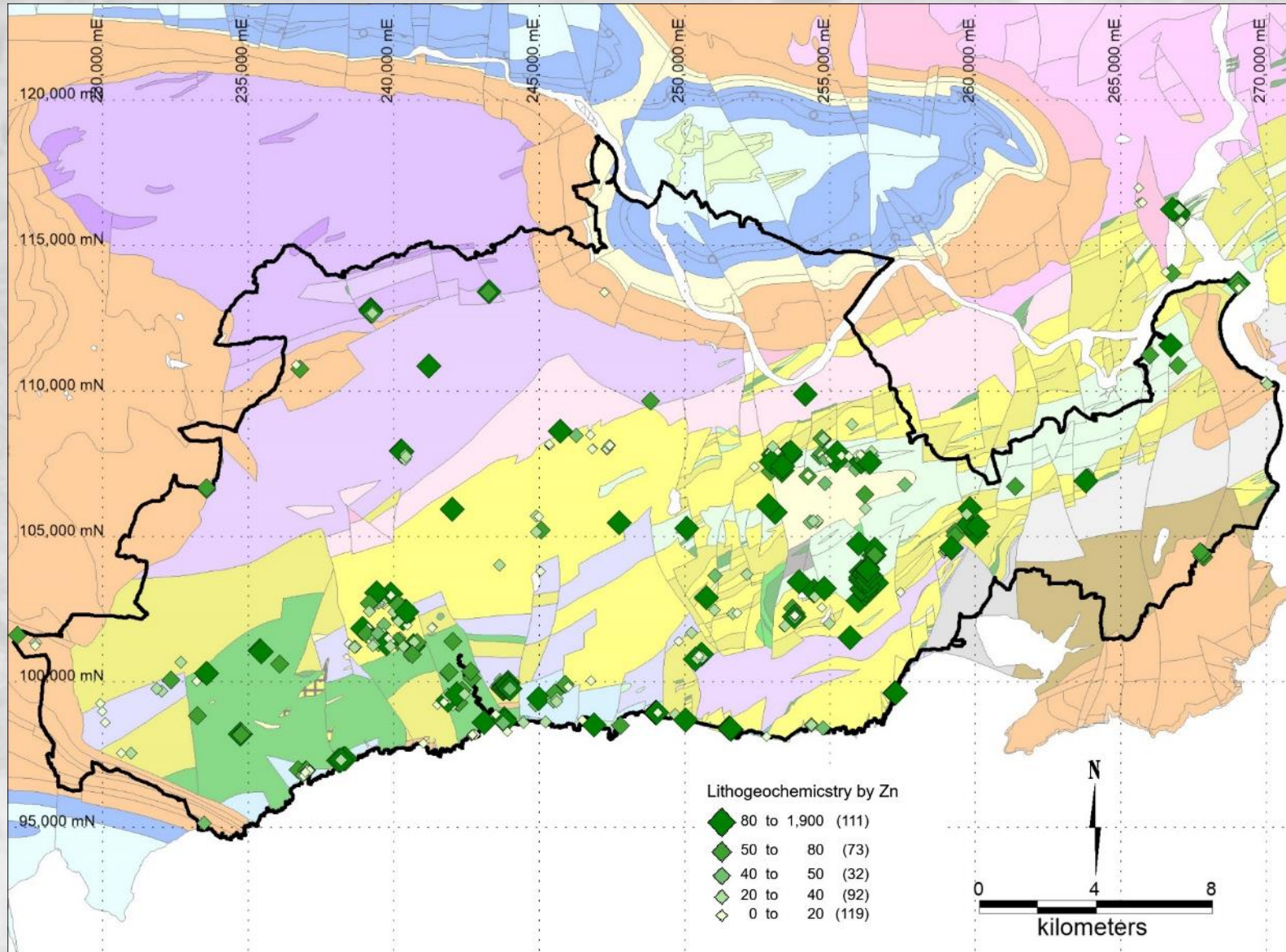
Unicorn Mineral Resources

Waterford Litho geochemistry - Pb



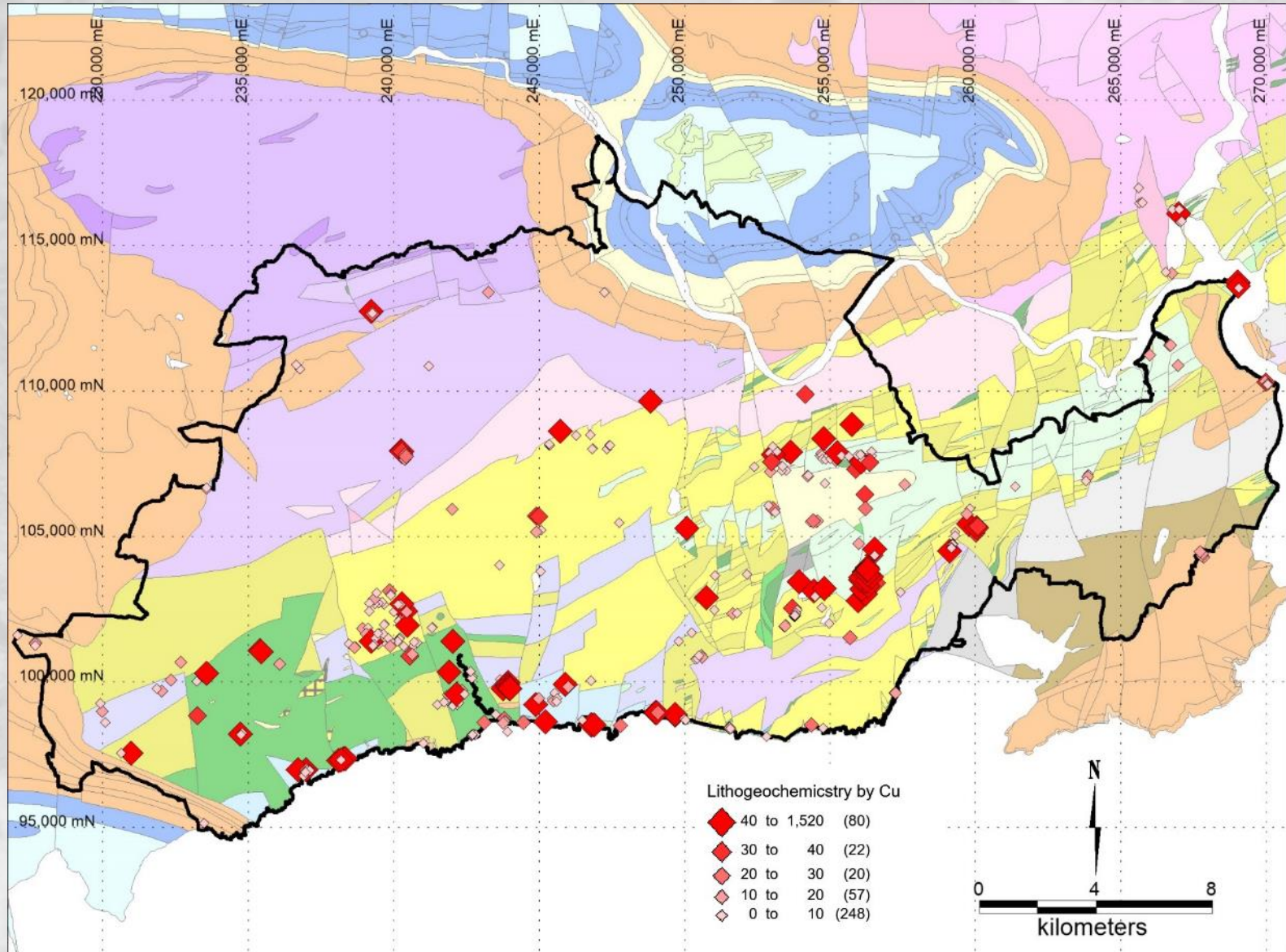
Unicorn Mineral Resources

Waterford Lithochemistry - Zn



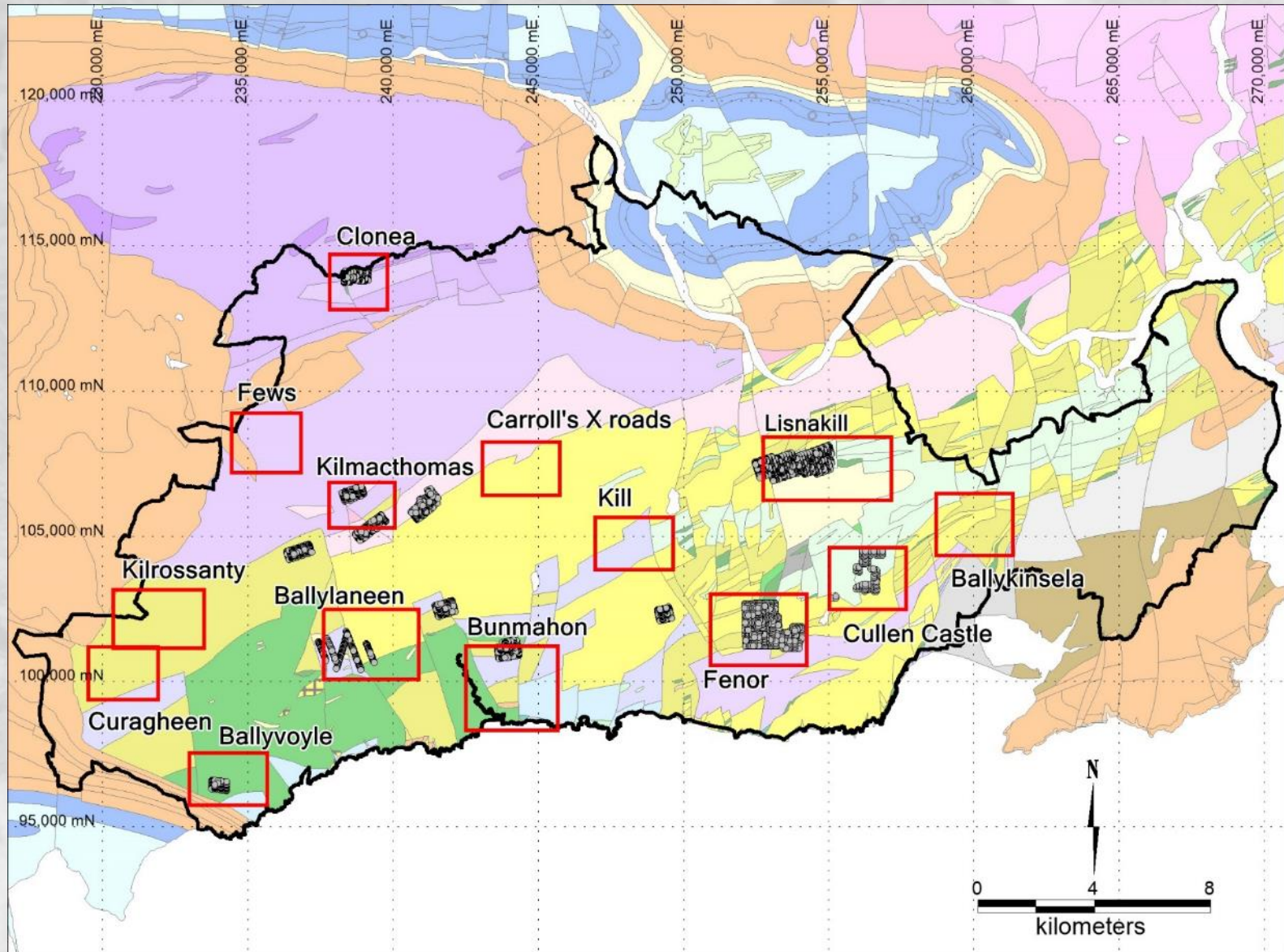
Unicorn Mineral Resources

Waterford Litho geochemistry - Cu



Unicorn Mineral Resources

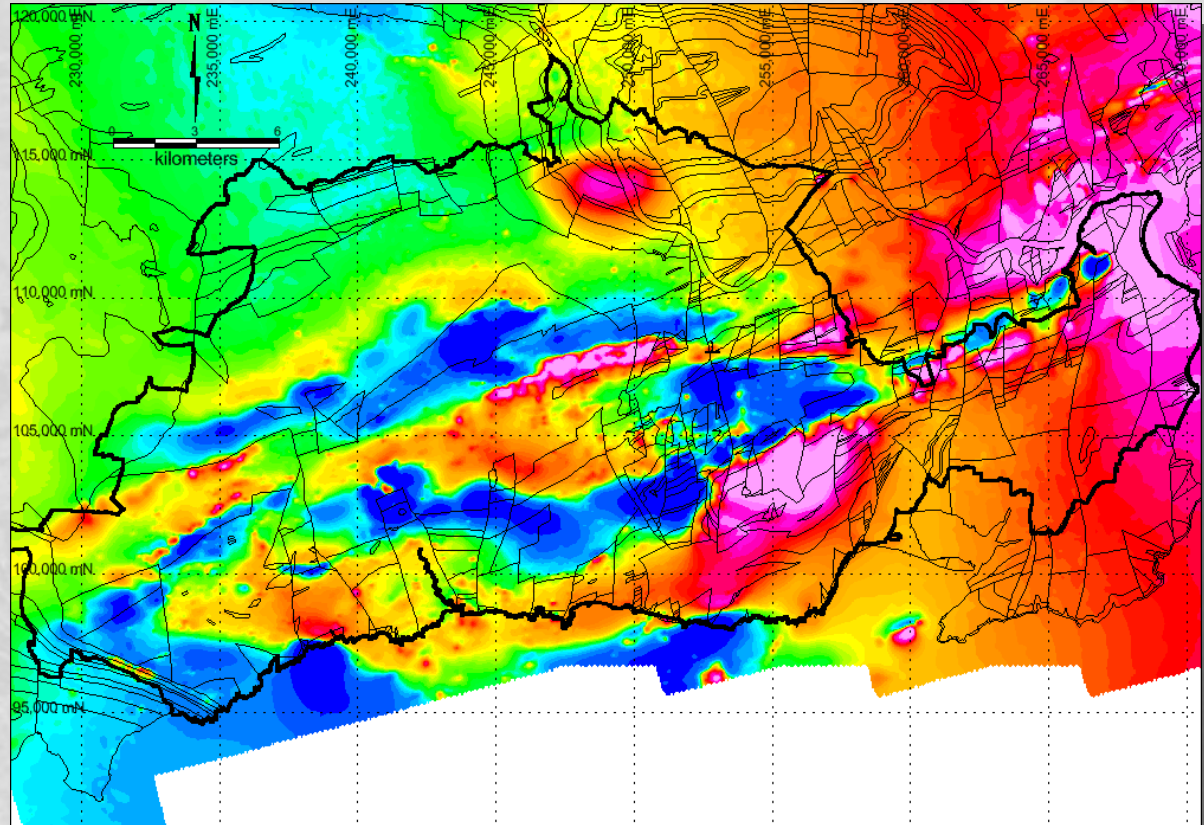
Waterford Deep Overburden Coverage



Unicorn Mineral Resources

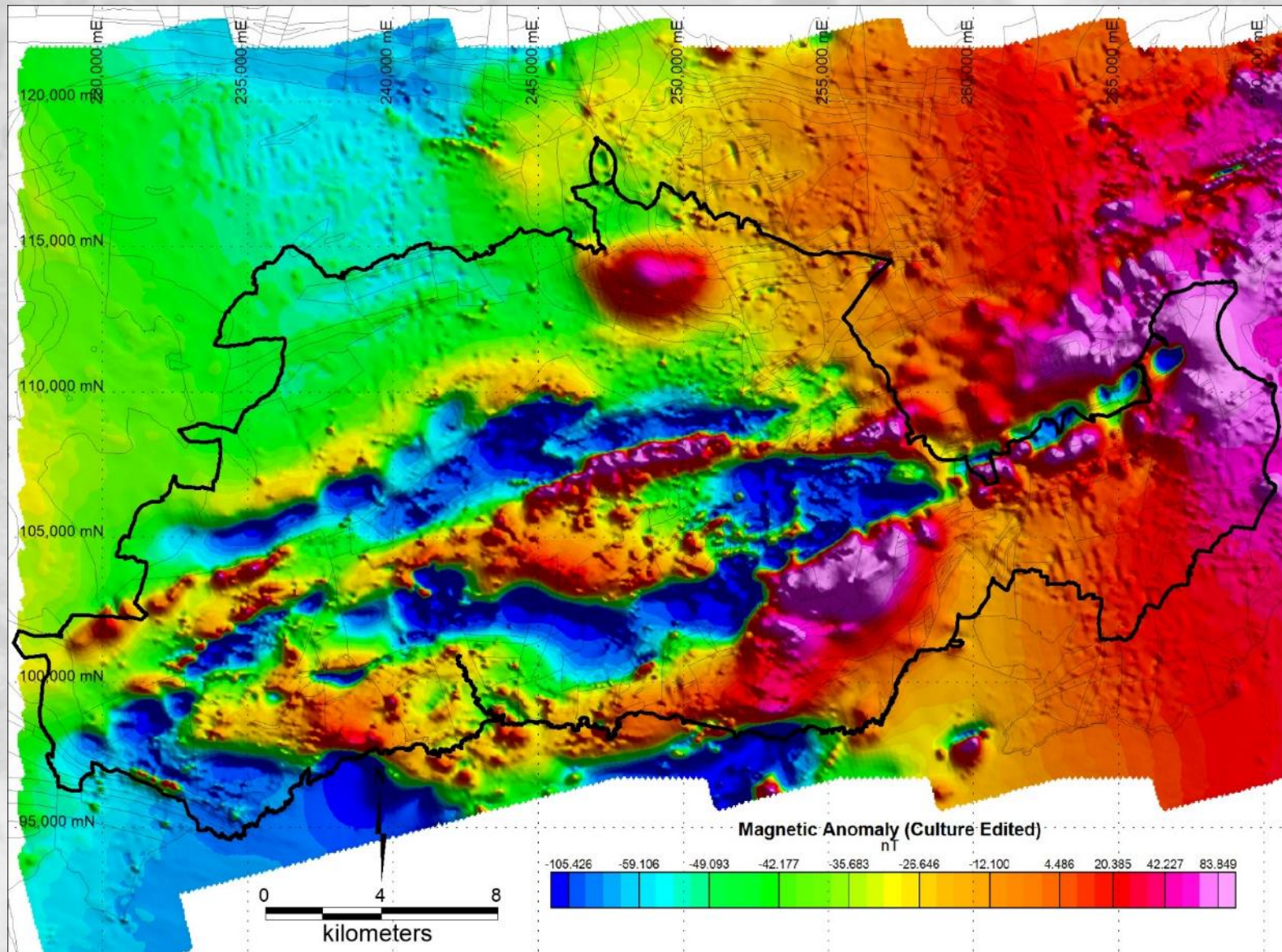
Waterford Block

- ❖ Airborne geophysical survey flown in May / June 2016. UMR / GSI collaboration.
- ❖ Confirms the inaccuracy of the historic geological models – reinterpretation is in progress
- ❖ Geological / Structural contacts defined by the airborne geophysics are being used to more accurately define and refine targets to improve targeting efficiency



Unicorn Mineral Resources

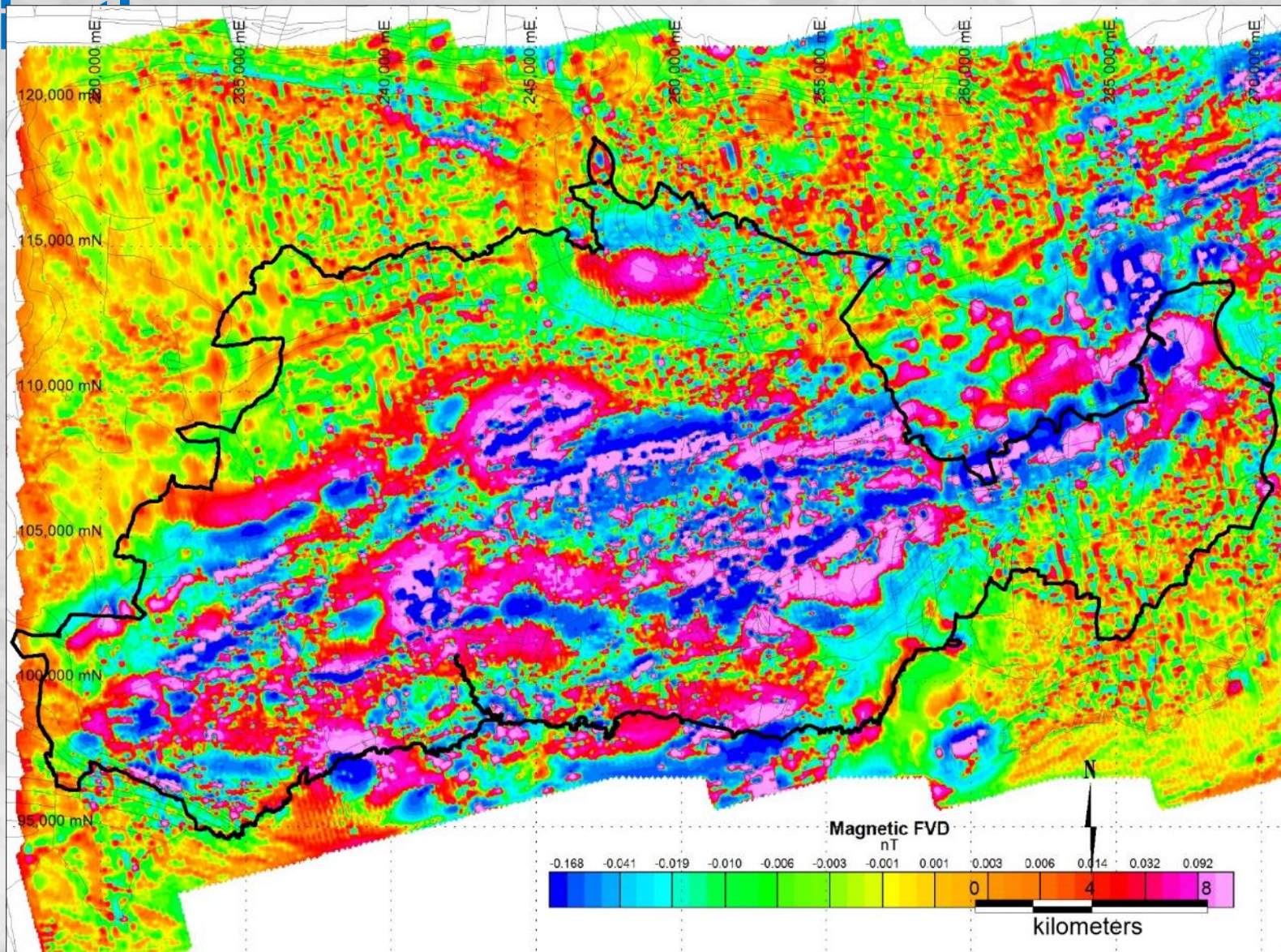
Waterford Airborne Magnetics



Unicorn Mineral Resources

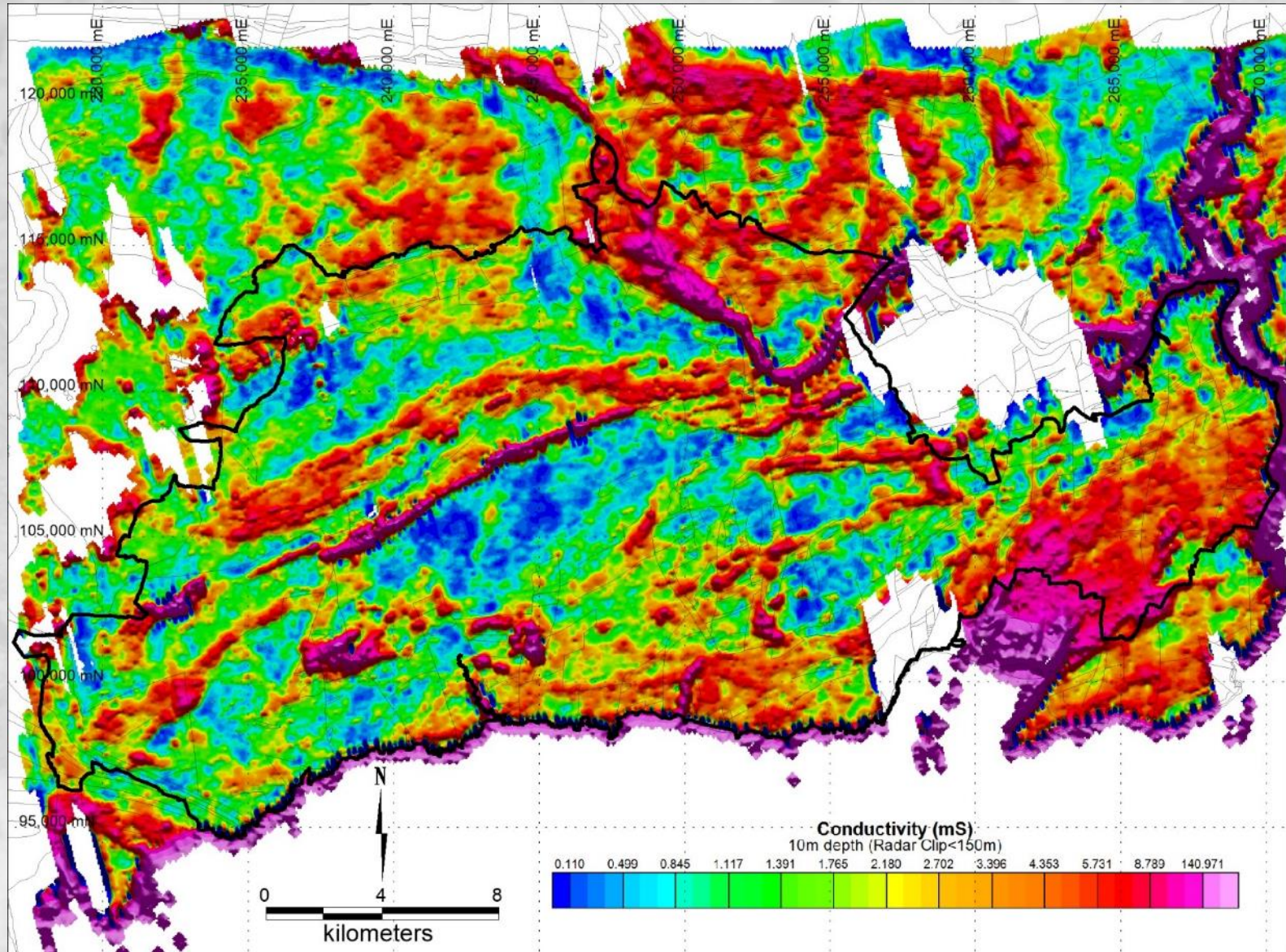
Waterford Magmetics – First Vertical

Derivative



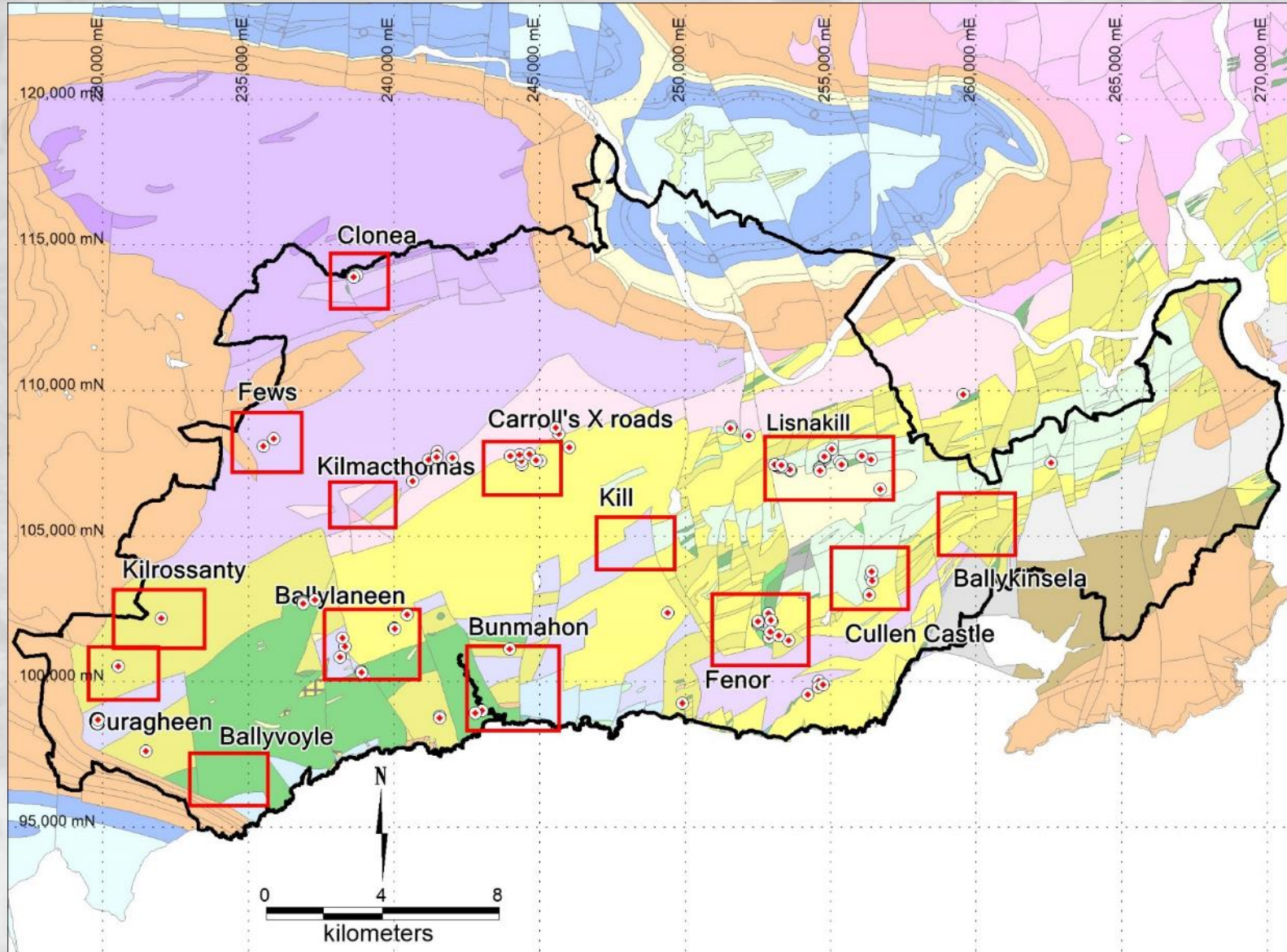
Unicorn Mineral Resources

Waterford EM – 10m Depth Slice



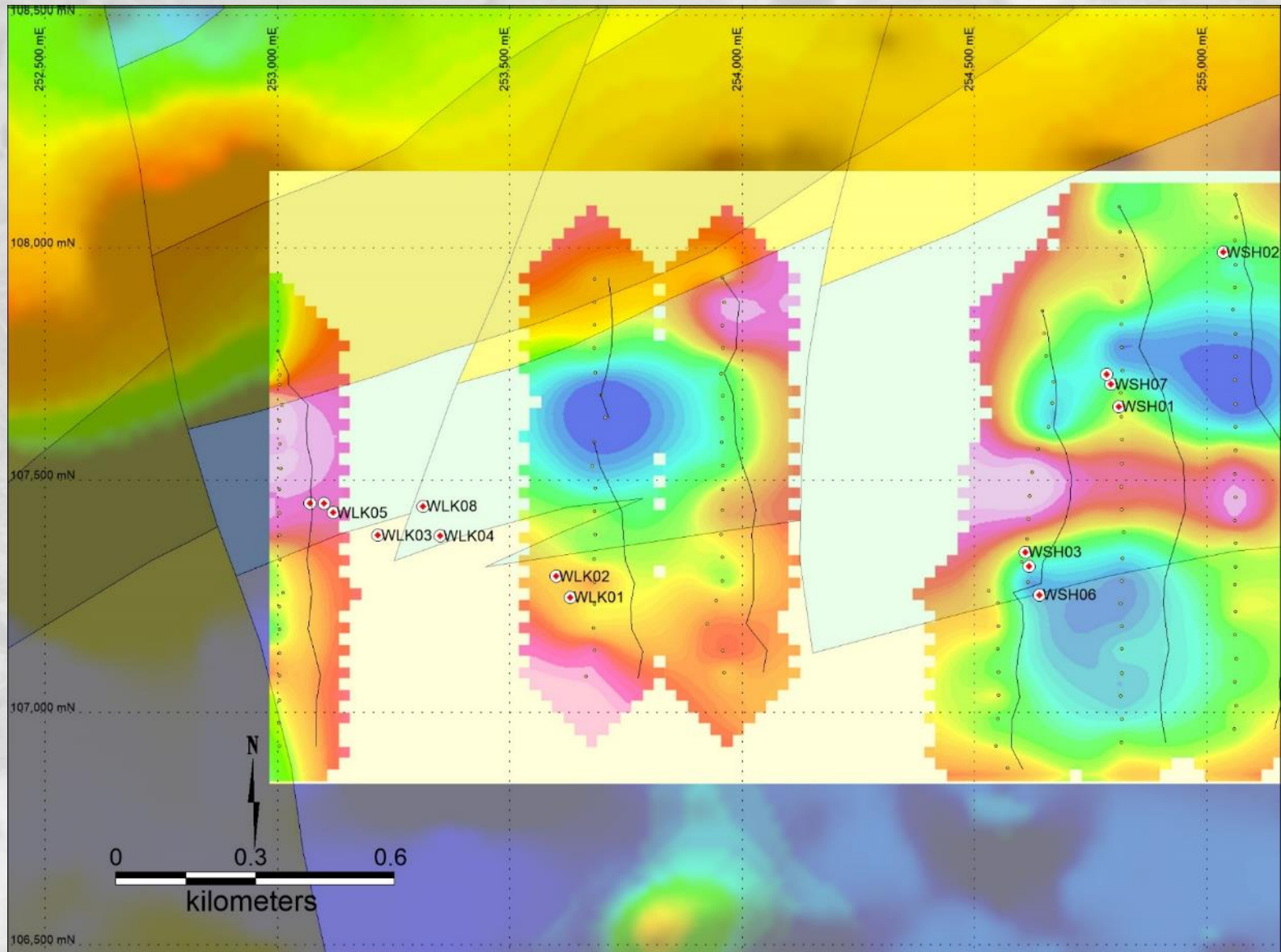
Unicorn Mineral Resources

Waterford Geology / PL's / Target Zones



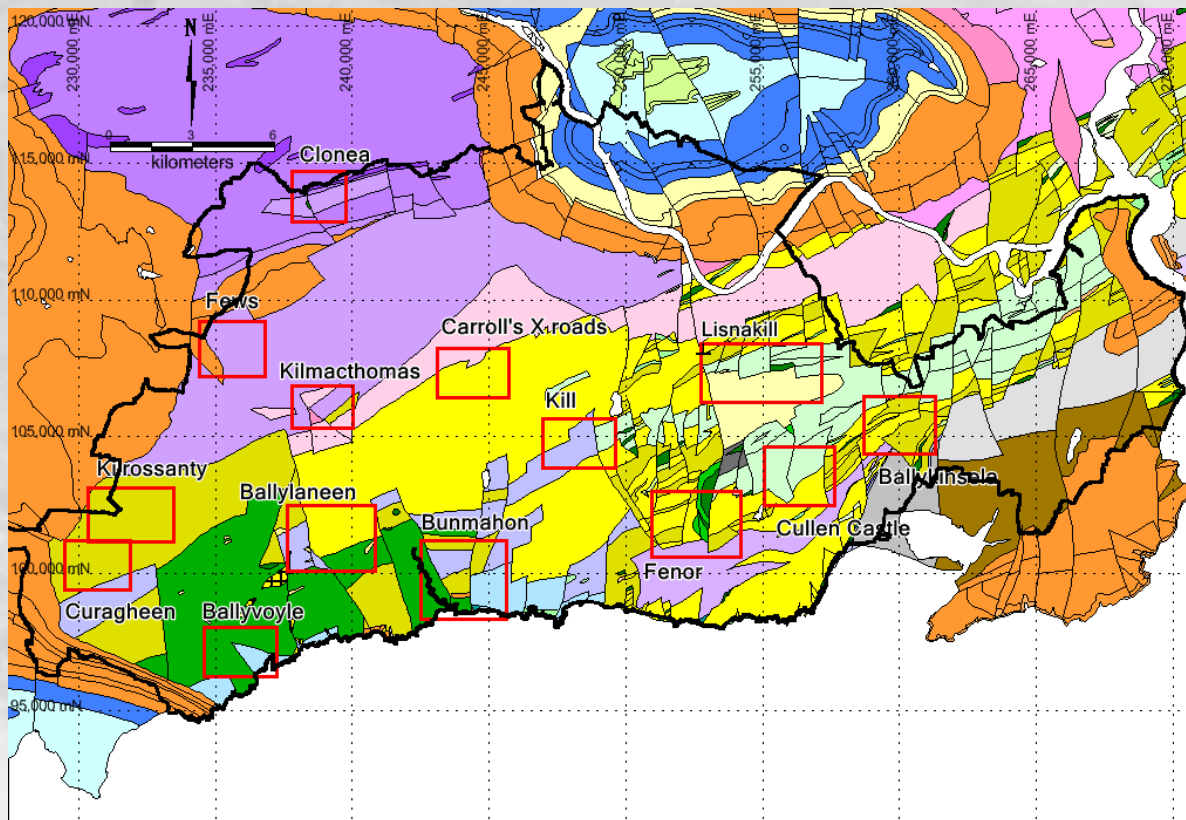
Unicorn Mineral Resources

Waterford - Lisnakill Target Zone



Unicorn Mineral Resources

Waterford Block



- ❖ Preliminary work has identified sixteen target areas for follow up groundwater.
- ❖ This work is ongoing and includes: deep overburden sampling, gravity and electromagnetic surveying.
- ❖ Results from the first few areas tested are encouraging and high quality drill targets are being identified.



Unicorn Mineral Resources

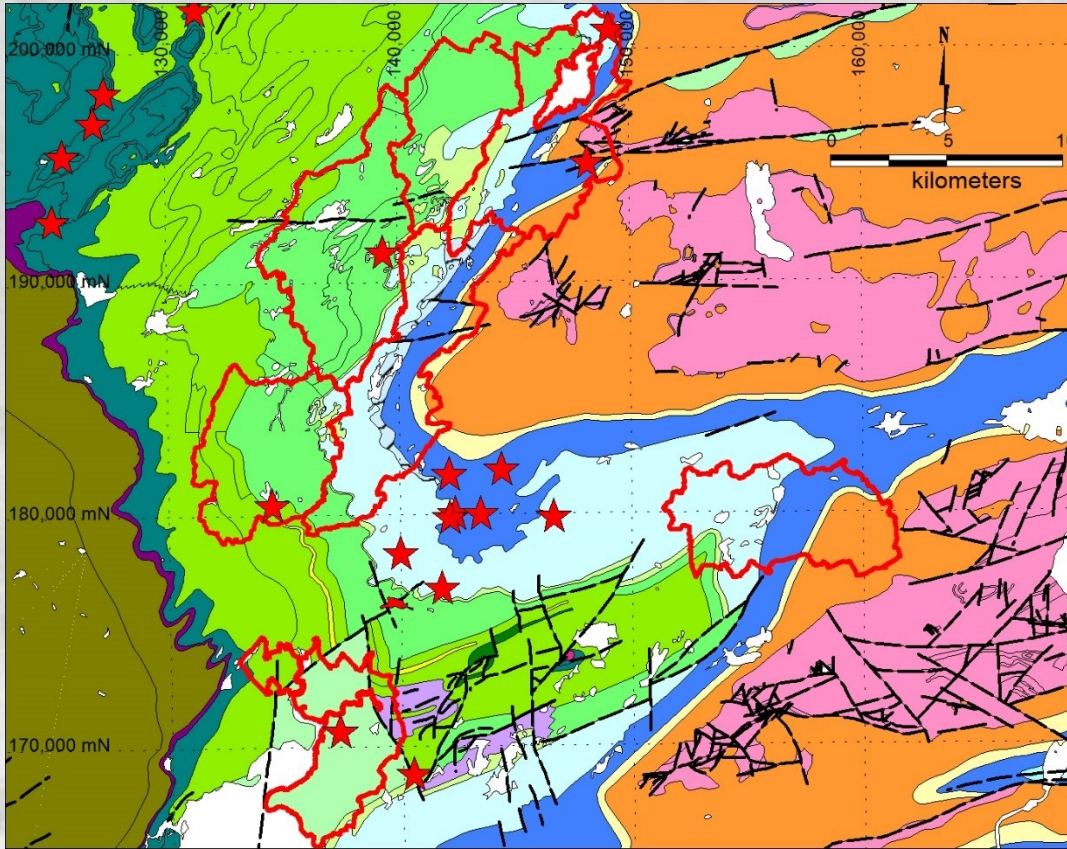
Gort Block

| | |
|---------------------|-----------------------------------------------------------------------------------------------------------------------------------------------------------------------------------------------------------------------------------------------------------------------------------------------------------------------------------------------------------------------------------------------------|
| Block | Seven Non Contiguous Prospecting Licences, Surface Area 292.65km ² |
| Infrastructure | Well developed minor and motorway class road network, north and east of the major regional town of Ennis |
| Regional location | Located at the intersection between the Tynagh-Ballinalck and Limerick Mineralising Trends |
| Strategic Location | 25km Southwest of the Tynagh Deposit and 5km west / northwest from the Kilbricken Deposit. |
| Target | Base of Waulsortian Reef - Carbonate Hosted, Zinc / Lead Massive Sulphides |
| Geological Setting | Western side of the Sleive Barnagh Lower Palaeozoic Inlier and around the margins of the Clare Syncline. Structurally complex with early stage fault movement controlling local shelf / basin margins. |
| Significant Results | <p>Prospecting has discovered lead and copper mineralisation in float and outcrop</p> <p>Mapping has defined major basement faults, with low grade Cu mineralisation that can be traced through the Carbonate Stratigraphy</p> <p>Diamond drilling has intersected Waulsortian Reef hosted massive pyrite, significant faulting with well developed breccias, dolomite and disseminated pyrite.</p> |



Unicorn Mineral Resources

Gort Block



- ❖ Extensive untested Waulsortian Reef on UMR ground
- ❖ Highly significant prospect being drilled by Hannan Metals at Kilbricken, just 5km away.
- ❖ The targets are relatively shallow (<300m).
- ❖ Numerous mineral occurrences across the Clare region developed high in the stratigraphy, can be associated with deeper, high grade, massive sulphides located at the base of the Waulsortian Reef



Unicorn Mineral Resources

Gort Block

- ❖ Ground geophysical surveying is ongoing
- ❖ Target generation is ongoing using new data / models
- ❖ An Airborne Geophysical Survey (Magnetics, EM and Radiometrics) will be flown in the Spring
- ❖ Future Exploration Program will be decided on interpretation of current ground exploration together with results from Airborne Survey



Unicorn Mineral Resources

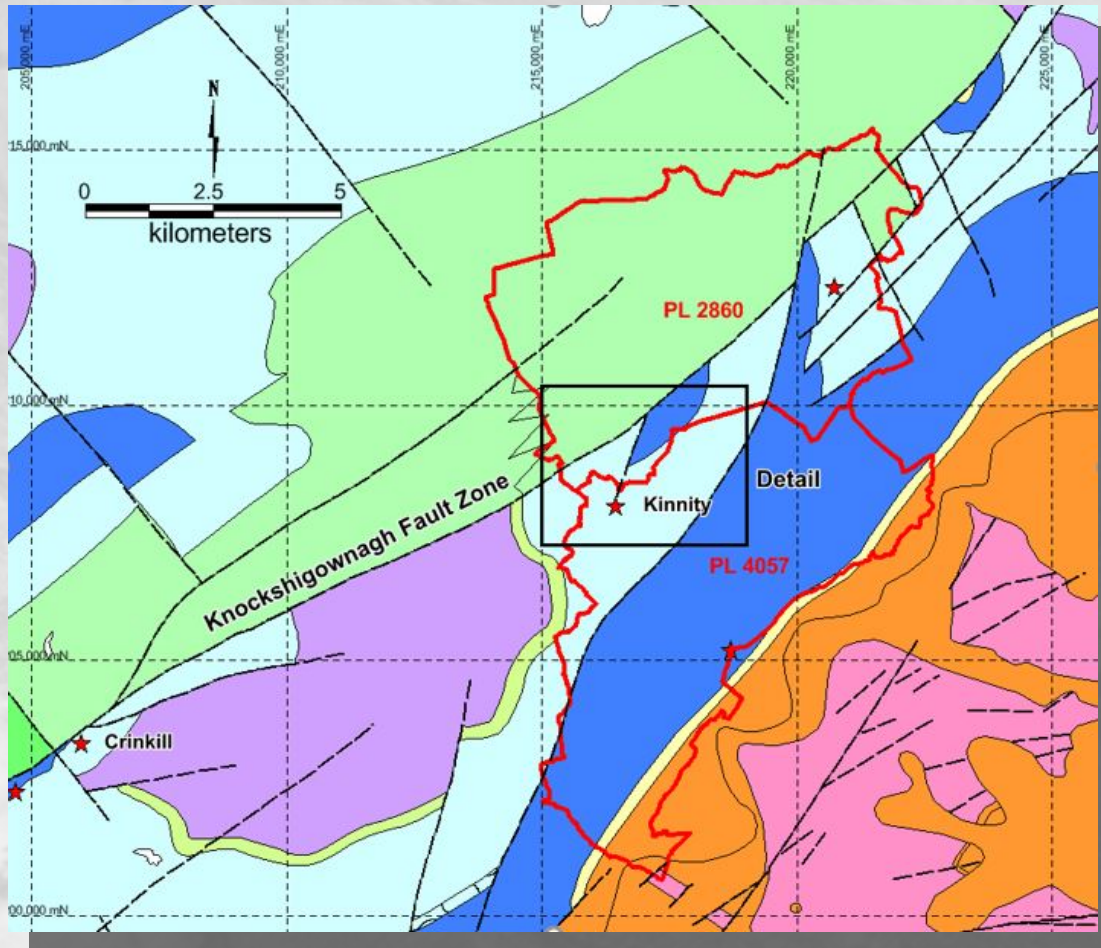
Kilcormick Block

| | |
|---------------------|--------------------------------------------------------------------------------------------------------------------------------------------------------------------------------------------------------------------------------------------------------------------------------------------------------------------------------------------------------------------------------------------------------------------------------------------------------------------------------------------------------------------------------------------------------------------------------------------------------------------------------------------------------------------------------------------------------------------------------------------------------------------------------------------------------------------------------------------------------------------------------------------------------------|
| Block | Two contiguous Prospecting Licences, Surface Area 70.39km ² |
| Infrastructure | Well developed minor and regional class road network, south of the small town of Kilcormick. Land use is dominated by pasture land for grazing of sheep, cattle with minor raise bog. |
| Regional location | Located along the major Navan - Silvermines Mineralising Trend. |
| Strategic Location | 45km northeast of the Silvermines Zn / Pb Deposit and 11km northeast of the Crinkill base of Waulsortian Reef hosted Iron Formation. |
| Target | Waulsortian Reef hosted - Carbonate Hosted, Zinc / Lead Massive Sulphides. The target model in this area is different from the classic, flat lying, stratiform/stratabound model. Drilling has encountered dipping brecciated massive sulphides with a marcasite dominated iron sulphide speciation, it is felt that this mineralisation is more closely related to Mississippi Valley Type carbonate hosted Zn / Pb |
| Geological Setting | The Kilcormick Block is located along the structural hangingwall side of a regional scale, basin controlling fault zone - the Knockshigownagh Fault. This structure controlled the northern boundary of a major basin centred on the Slieve Bloom region and bounded to the south proximal to the Rathdowney Trend. The Knockshigownagh Fault was reversed during Variscan compressional tectonics and now has a reverse throw of up to 900m. The Kilcormick Block is located along the structural hangingwall (southeastern side) of the Knockshigownagh Fault and accordingly the depth to target is relatively shallow, 100 - 300m. Waulsortian Reef is locally well developed, however, structural complexity and facies variations related to depositional environment means it is modelled as pinching out to the northeast. |
| Significant Results | <p>Historic drilling by Arcon / Noranda in the 1990's intersected significant brecciated massive sulphide mineralisation hosted with the Waulsortian Reef at the Kinnity Prospect. The best intersections from this phase of drilling are:</p> <p>K10: 1.75m, grading 5.54% Zn / 0.33% Pb</p> <p>K15: 4.58m, grading 6.40% Zn / 0.29% Pb</p> <p>K16: 2.87m, grading 8.14% Zn / 0.27% Pb and 4.62m grading 9.94% Zn / 0.81% Pb</p> <p>K21: 10.21m, grading 9.45% Zn / 1.12% Pb</p> <p>UMR carried out some drilling, following up on the historic work and testing in hole geophysics, the best hole returned:</p> <p>UMK-001: 6.80m grading 4.23% Zn / 0.25% Pb and 4.30m grading 4.63% Zn / 1.00% Pb</p> <p>UMR has carried out a number of in hole and surface geophysical surveys and have identified a number of targets along strike from the Kinnity Occurrence</p> |



Unicorn Mineral Resources

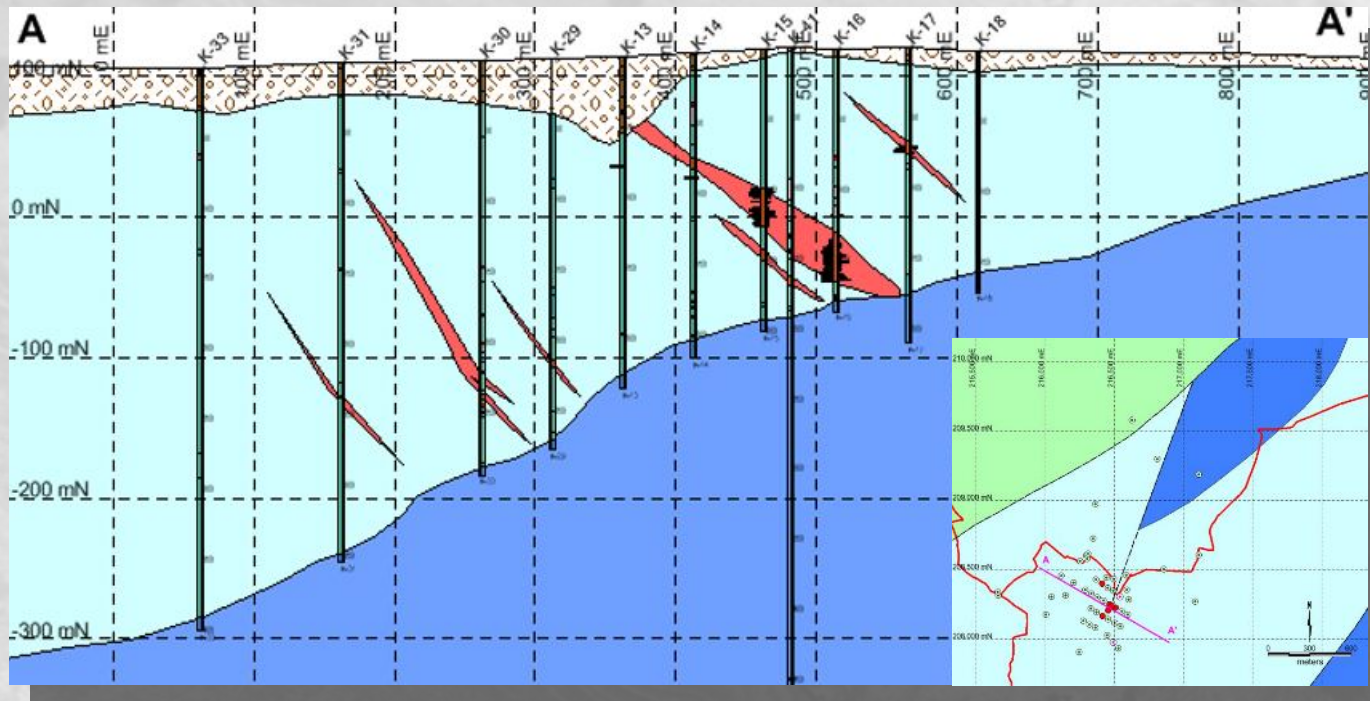
Kilcormick Block



- ❖ Major Caledonian Fault Zone, that is controlling the basin margin
- ❖ Well developed Waulsortian Reef with depositional / structurally controlled facies variation
- ❖ High Grade MVT style massive sulphide occurrences
- ❖ Mineralisation not fully understood and opportunities exist to develop and extend the sulphide body

Unicorn Mineral Resources

Kilcormick Block



- ❖ Multiple Waulsortian Reef hosted, cross cutting, steeply dipping massive sulphide bodies
- ❖ Brecciated, multiphase, Marcasite clasts, rimmed and crosscut by later collomorphic sphalerite and galena
- ❖ Complex structural morphology
- ❖ Mineralisation potentially open along strike to the northeast and southwest.



Unicorn Mineral Resources

Kilcormick Block



- ❖ Geological complex area, complex structural history, controls not well understood
- ❖ Well developed host lithology
- ❖ High Grade MVT style massive sulphide mineralisation intersected by drilling
- ❖ Further drilling is warranted

Unicorn Mineral Resources

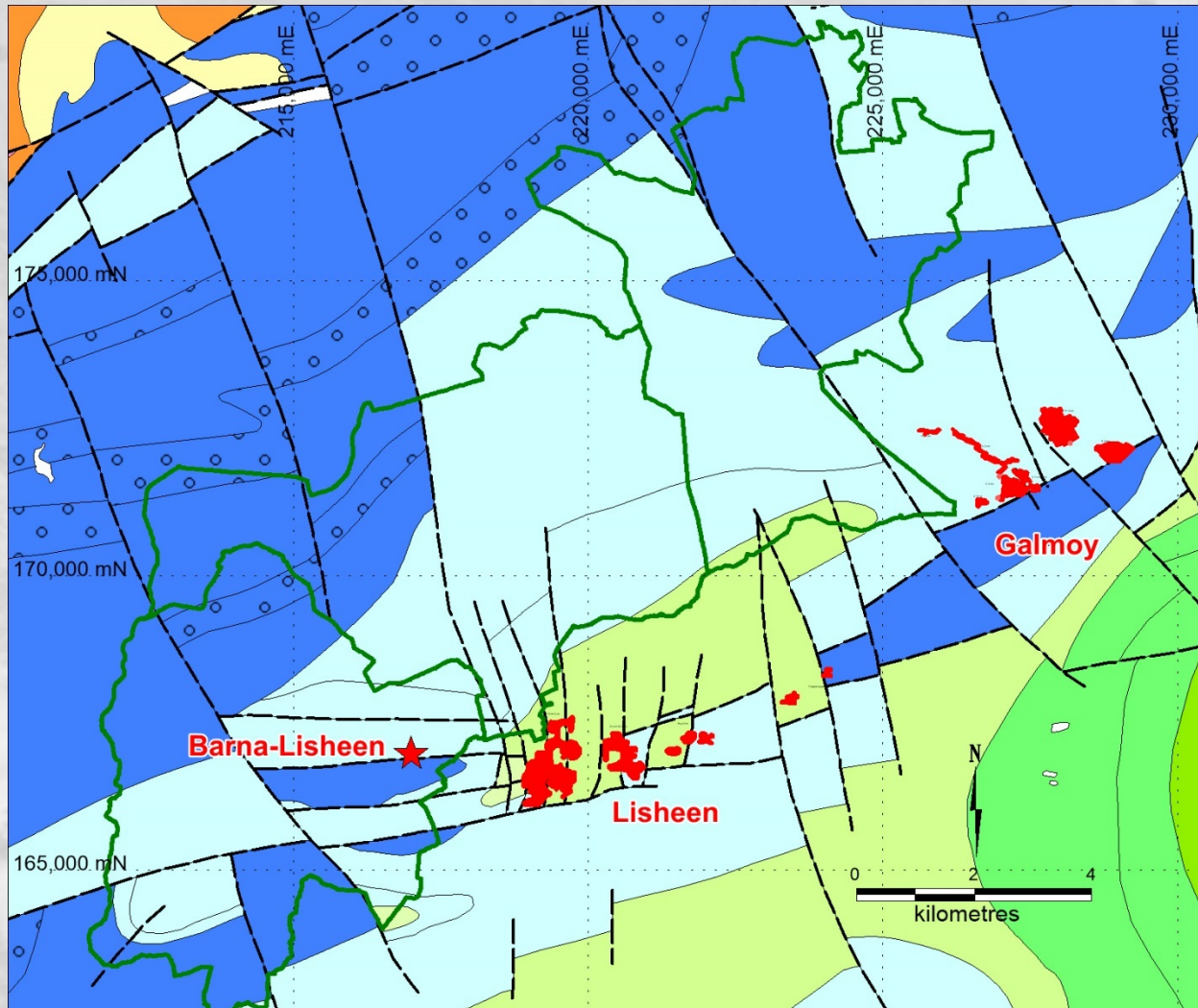
Lisheen Block (Under Application)

| | |
|---------------------|-----------------------------------------------------------------------------------------------------------------------------------------------------------------------------------------------------------------------------------------------------------------------------------------------------------------------------------------------------------------------------------------------------------------------------------------------------------------------------------------------------------------------------------------------------------------------------------------------------------------------------------------------------------------------------------------------------------------------------------------------------------------------------------------------------------|
| Block | Three contiguous Prospecting Licences, Surface Area 102.24km ² |
| Infrastructure | Well developed minor and regional class road network, south of the small town of Kilcormick. Land use is dominated by pasture land for grazing of sheep, cattle with minor raised bog. |
| Regional location | Located along the world famous, highly prospective Rathdowney Mineralising Trend. |
| Strategic Location | Adjacent to the Lisheen and Galmoy Zn / Pb Deposits |
| Target | Base of Waulsortian Reef - Carbonate Hosted, Zinc / Lead Massive Sulphides |
| Geological Setting | Located along the Rathdowney Trend immediately north of the Lisheen and Galmoy deposits occupying a strategic location around both of these deposits. The licences are underlain by well developed and regional dolomitised Waulsortian Reef that dips gently to the south. The area is cross-cut by Caledonian faults orientated ENE-WSW and NW-SE. Extensions of the main controlling fault systems at both the Lisheen and Galmoy deposits can be traced onto these licences. Historic exploration was focused upon the immediate mine areas at both deposits, there is significant opportunity to explore for additional deposits in the 5 – 10Mt range and the imminent reopening of the Galmoy mine mean that there is potential to develop a mining centre being fed by numerous smaller deposits. |
| Significant Results | <p>Recent Mining has taken place immediately adjacent to these licences.</p> <p>Lisheen 22Mt 12% Zn / 2% Pb - Located immediately to the south of the Block</p> <p>Galmoy 9Mt 135 Zn / 2% Pb - Located immediately to the east of the Block</p> <p>Barna Lisheen – significant mineral occurrence located on the licence Block c.1km northwest of the Lisheen Main Zone Lens. Base of Reef breccia hosted massive sulphides dominated by sphalerite and galena – highly prospective and undeveloped. The presence of Barna Lisheen supports the potential for other satellite deposits across this belt</p> <p>Early stage evaluation must be completed ASAP to develop an exploration strategy for the block</p> |



Unicorn Mineral Resources

Lisheen Block (Under Application)



- ❖ Located along the Rathdowney Trend
- ❖ Well developed Waulsortian Reef with depositional / structurally controlled facies variation
- ❖ High Grade Irish Type massive sulphide occurrences
- ❖ Region is not fully explored and opportunities exist to discover additional massive sulphide deposits



Unicorn Mineral Resources

UMR Conclusion

- ❖ UMR has an enviable ground position with significant base metal mineralisation on four out of five exploration blocks
- ❖ Poorly defined and delineated high grade Waulsortian Reef hosted mineralisation at Kilmallock in the Limerick province is an outstanding opportunity. An Airborne survey will be carried out on this block in 2018
- ❖ The three prospecting licences under application on the Lisheen Block are contiguous with the Lisheen and Galmoy Deposits along the world famous Rathdowney Trend. There is existing mineralisation on the licences and this block is an undoubted high quality addition to UMR's portfolio of prospective ground
- ❖ The Waterford Block is an exciting opportunity and the airborne survey has allowed us to develop new geological models and exploration targets, we are at the phase where drilling is required.
- ❖ The massive zinc and lead sulphide mineralisation at Kilcormick must be tested and the targets to the northeast are obvious starting points.
- ❖ The Gort Block is adjacent to Hannan Metals "Kilbricken Copper/Zinc Ore body.

