

# Unicorn Mineral Resources

## Investor Presentation July 2022

Opportunity to invest in the  
Emerging Zinc Province in Ireland  
“The Limerick Basin”



# Disclaimer

This presentation does not constitute or form part of any offer for sale or solicitation of any offer to buy or subscribe for any securities in Unicorn Mineral Resources Ltd. nor shall it or any part of it form the basis of, or be relied on in connection with, or act as any inducement to enter into, any contract or commitment whatsoever. No reliance may be placed for any purpose whatsoever on the information or opinions contained in this presentation or on any other document or oral statement or on the completeness, accuracy or fairness of any such information and/or opinions. No undertaking, representation, warranty or other assurance, express or implied, is made or given by or on behalf of Unicorn Mineral Resources or any of their respective directors, employees or advisers, as to the accuracy or completeness of the information or opinions contained in this presentation, and (save in the case of fraud) no responsibility or liability is accepted by any of them for any such information or opinions or for any errors, omissions, misstatements, negligence or otherwise contained or referred to in this presentation. The contents of this presentation have not been approved by an authorized person within the meaning of the Financial Services and Markets Act 2000.

This presentation is not a prospectus within the meaning of the Prospectus (Directive 2003/71/EC) Regulations 2005 of Ireland and therefore has not been approved by the Irish Financial Services Regulatory Authorities being the competent authority for the purposes of Directive 2003/71/EC in Ireland. This presentation is not an offering document for the purposes of section 49 of the Investment Funds, Companies and Miscellaneous Provisions Act 2005 of Ireland.

This Presentation has been prepared by the Directors of Mineral Resources and is being issued solely to and directed at persons who have professional experience in matters relating to investments falling within Article 19(1)(a) of the Financial Services and Markets Act 2000 (Financial Promotion) Order 2005 (as amended the "FPO") or (b) high net worth entities and other persons to whom the presentation may otherwise lawfully be communicated, falling within Article 49(1)(a) of the FPO (all such persons together being referred to as "Relevant Persons"). In consideration of the receipt of the presentation each recipient warrants and represents that he or it is a person falling within that description. Delivery of this information to any other person or reproduction, in whole or in part, without the prior consent of Unicorn Mineral Resources is prohibited.

This information is being supplied to you, in whole or in part, for information purposes only and not for any other purpose. In particular, the distribution of this document in jurisdictions other than United Kingdom or Ireland may be restricted by law and persons into whose domain this document comes should inform themselves about, and observe, any such restrictions. Any failure to comply with these restrictions may constitute a violation of laws of any such other jurisdictions.



# Unicorn Mineral Resources

## Ireland – A Global Zinc Destination

❖ One of the world's most fertile geological terrain for Zinc (tonnes/km<sup>2</sup>)

❖ Large, high grade zinc / lead mines:

<b>Navan</b>	approximately 111Mt (7.9% Zn / 1.9% Pb)
<b>Lisheen</b>	approximately 22.4Mt (11.63% Zn / 1.96% Pb)
<b>Galmoy</b>	approximately 9.7Mt (12.5% Zn / 2.9% Pb)
<b>Silvermines</b>	approximately 18Mt (5%Zn/4% Pb)
<b>Tynagh</b>	approximately 11Mt (5% Zn/ 6% Pb)

❖ Ireland is ranked number one for zinc per square kilometre in the world

❖ Stable, mining friendly government with a low corporate tax regime and highly educated workforce

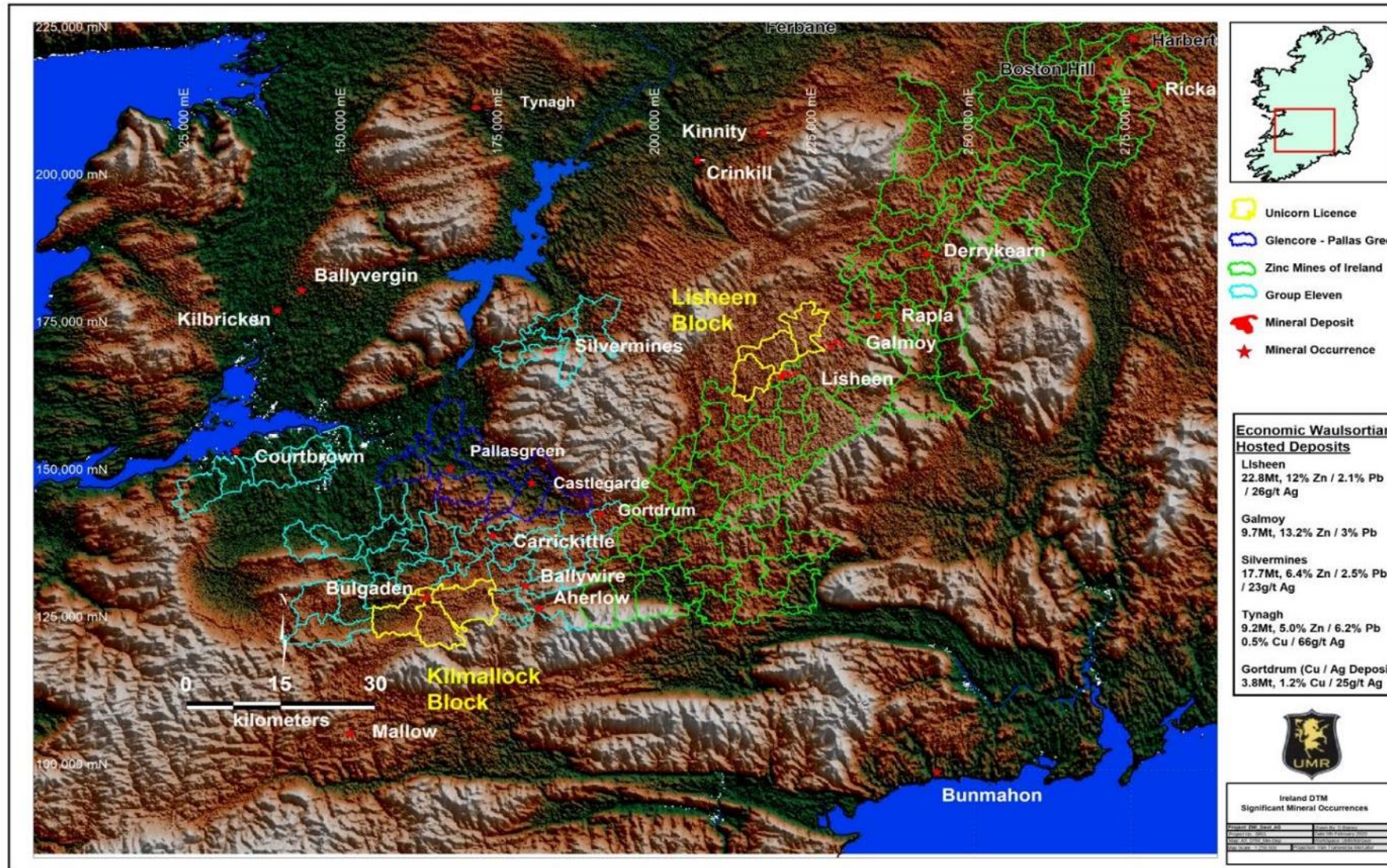
❖ Highly developed transport and power infrastructure, part of the European Union





# Unicorn Mineral Resources

## The Irish Midlands- Limerick Basin





# Unicorn Mineral Resources

- ❖ Unicorn Mineral Resources Plc is (“Company”) an Irish Exploration company, founded in 2010 by Richard O’Shea, Dave Blaney and John O’Connor, who have a combined 85 years experience of working in the exploration and mining sector in Ireland, in both quoted and private companies.
- ❖ The Company’s business is to explore for zinc in Ireland and has worked on several license blocks since 2010. The Company’s current focus is on the highly prospective Limerick Basin.
- ❖ The Company’s flagship project is the Kilmallock block, which is drill ready.
- ❖ The Company has Approx 18.5 million shares in issue and options outstanding over a further 3.6 million shares exercisable at 5p a share. (22.1 Million shares fully diluted).
- ❖ In addition, the Company has Approx 10.7 million warrants outstanding at an exercise price of 10p each.
- ❖ The Company intends to raise a minimum of £750,000 through the issue of new shares through a listing on the Standard Market of the London Stock Exchange. Shares are expected to be listed at £0.10 each and none of the existing or new warrants will be listed. Listing is expected in July 2022.
- ❖ It is intended that proceeds of this fundraise will be used to fund an exploration program at Unicorn’s Kilmallock block of licences and other working capital requirements.
- ❖ It is intended that Phase 1 of this exploration will include 2000 Metres of drilling (6 Drillholes) in target areas of the Kilmallock licence block.



# Unicorn Mineral Resources

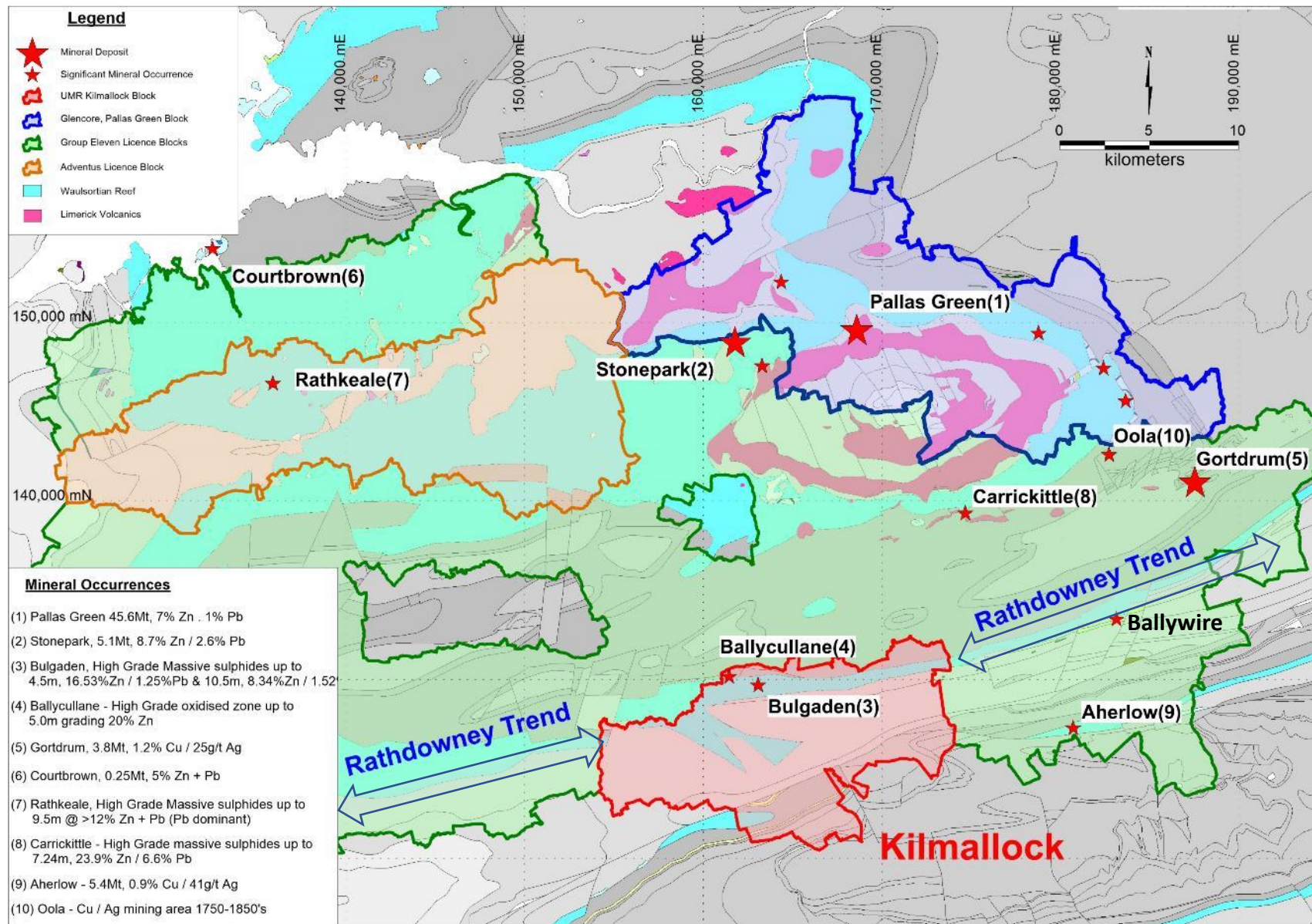
## Kilmallock Block –Executive Summary

- ❖ The Kilmallock Block is located in the Limerick Province, a new and relatively under-explored quadrant of the world class Zn/Pb district, the Irish Midlands Orefield.
- ❖ The Limerick Province hosts a number of recently discovered and undeveloped Zn / Pb deposits, including Glencore's giant Pallas Green deposit (>45 Mt 7% Zn / 1% Pb) and Group Eleven/ Arkle's Stonepark Deposit (5.1 Mt 8.7% Zn 2.6% Pb).
- ❖ Kilmallock is located along a Southwestern extension of the regionally important mineralising trend known as the Rathdowney Trend, which contains the Galmoy and Lisheen deposits.
- ❖ The main ore host of the Irish Midlands Orefield, Waulsortian Reef, is extensively developed across the Kilmallock Block.
- ❖ High grade Zn / Pb, massive sulphide mineralisation has been intersected by recent drilling on the Kilmallock Block at relatively shallow depths (180- 300m).
- ❖ The mineralisation discovered to date is strongly analogous to Pallas Green and Lisheen, which was located at the base of the Waulsortian, hosted by breccias, and controlled by NW-SE and E-W faults.
- ❖ Block is under-explored and mineralisation is open, with potential for additional resources.





# Unicorn Mineral Resources

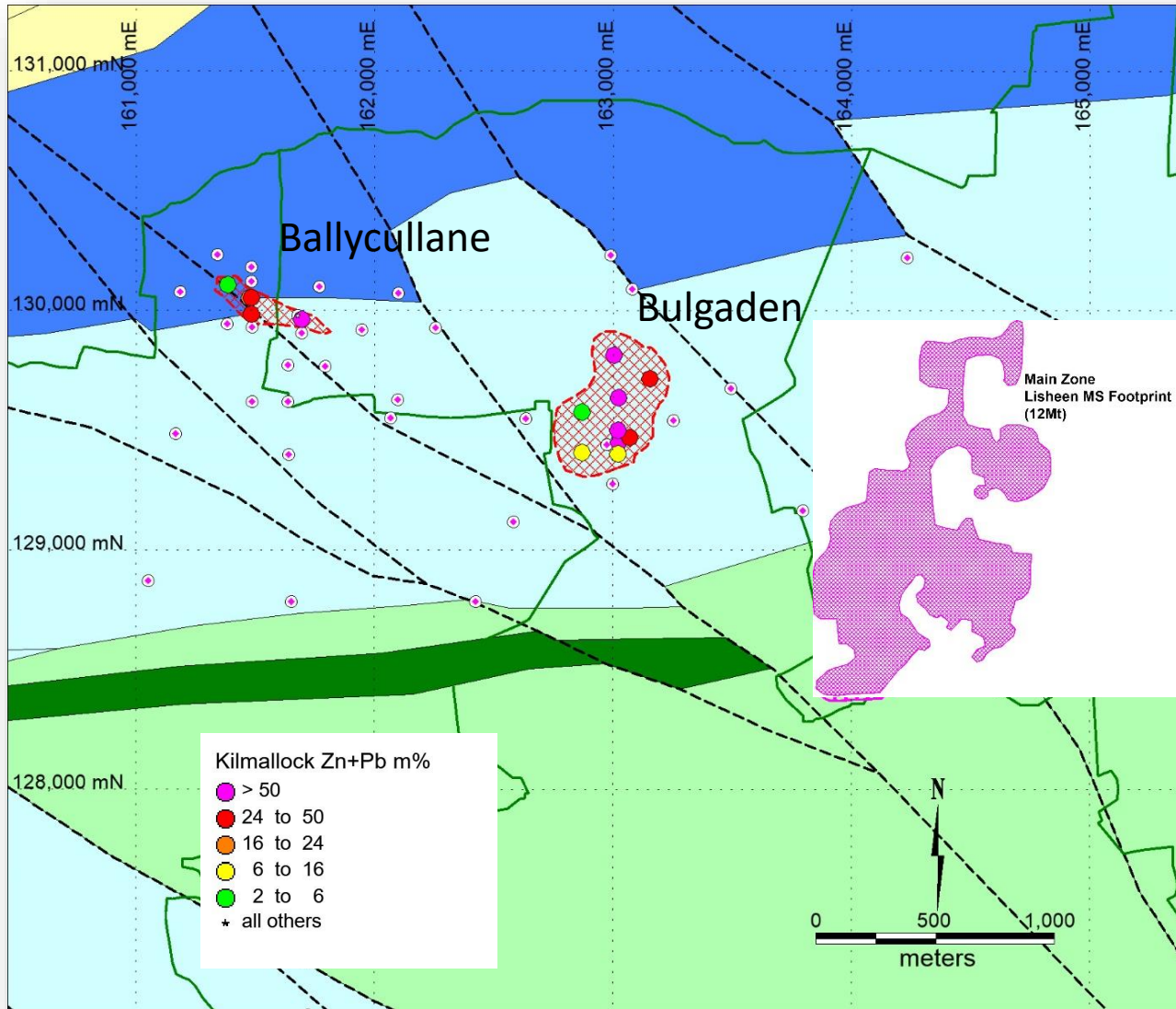


- ❖ Current Projects in the “Limerick Basin”.
- ❖ Unicorn’s Kilmallock Block is located 20km south of Glencore’s “Pallas Green” discovery and Group Eleven / Arkle’s “Stonepark” discovery.
- ❖ The Kilmallock Block is also located approximately 10km SW of the recent successful high grade drilling programmes by Group Eleven at both it’s “Carrickittle” and “Ballywire” projects.



# Unicorn Mineral Resources

## Kilmallock Target Size Comparison with Main Zone Lisheen (12Mt)



- ❖ Shows the footprint of the sulphides defined to date.
- ❖ Footprint of the Lisheen Main Zone (12Mt) included for scale / comparison
- ❖ Mineralisation is analogous to Lisheen - stratiform, stratabound and flat lying.
- ❖ Ballycullane Zone – Oxide deposit
- ❖ Bulgaden - Primary sulphides. Not delineated or constrained – potentially open in all directions





# Unicorn Mineral Resources

## Unicorn Kilmallock Block – Historic Drill Intersections

### Ballycullane (Oxide Zone) Zinc / Lead Grades

Hole ID	From (m)	To (m)	<sup>1</sup> Interval (m)	Zn (%)	Pb (%)	<sup>2</sup> Ag (g/t)
BC 3	16.764	22.86	6.10	9.90	1.00	N/A
BC 4	7.3152	15.24	7.92	17.70	0.48	N/A
BC 5	9.144	24.384	15.24	6.80	0.83	N/A
BC 6	15.24	18.288	3.05	12.90	0.12	N/A

1. True thicknesses are interpreted as 70-95% of stated intervals.
2. Silver was not analysed

### Bulgaden (Sulphide Zone) Zinc, Lead and Silver Grades

Hole ID	From (m)	To (m)	<sup>1, 2</sup> Interval (m)	Zn (%)	Pb (%)	Ag (g/t)
3249-14	183	189	6	10.43	1.78	N/A
3249-16	123	135	12	4.29	0.91	23.55
3249-18	192.6	195	2.4	12.76	2.00	34.40
3249-19	290	296	6	3.06	0.91	10.75
3249-19	312.5	317.8	5.3	9.55	2.09	27.26
3249-20	325.2	329	3.8	14.66	4.83	133.79
3249-24	278	288.5	10.5	8.34	1.52	61.98
Inc.	279.1	280.3	1.2	48.94	7.23	204.00
3249-25	299	303.5	4.5	16.53	1.25	57.12

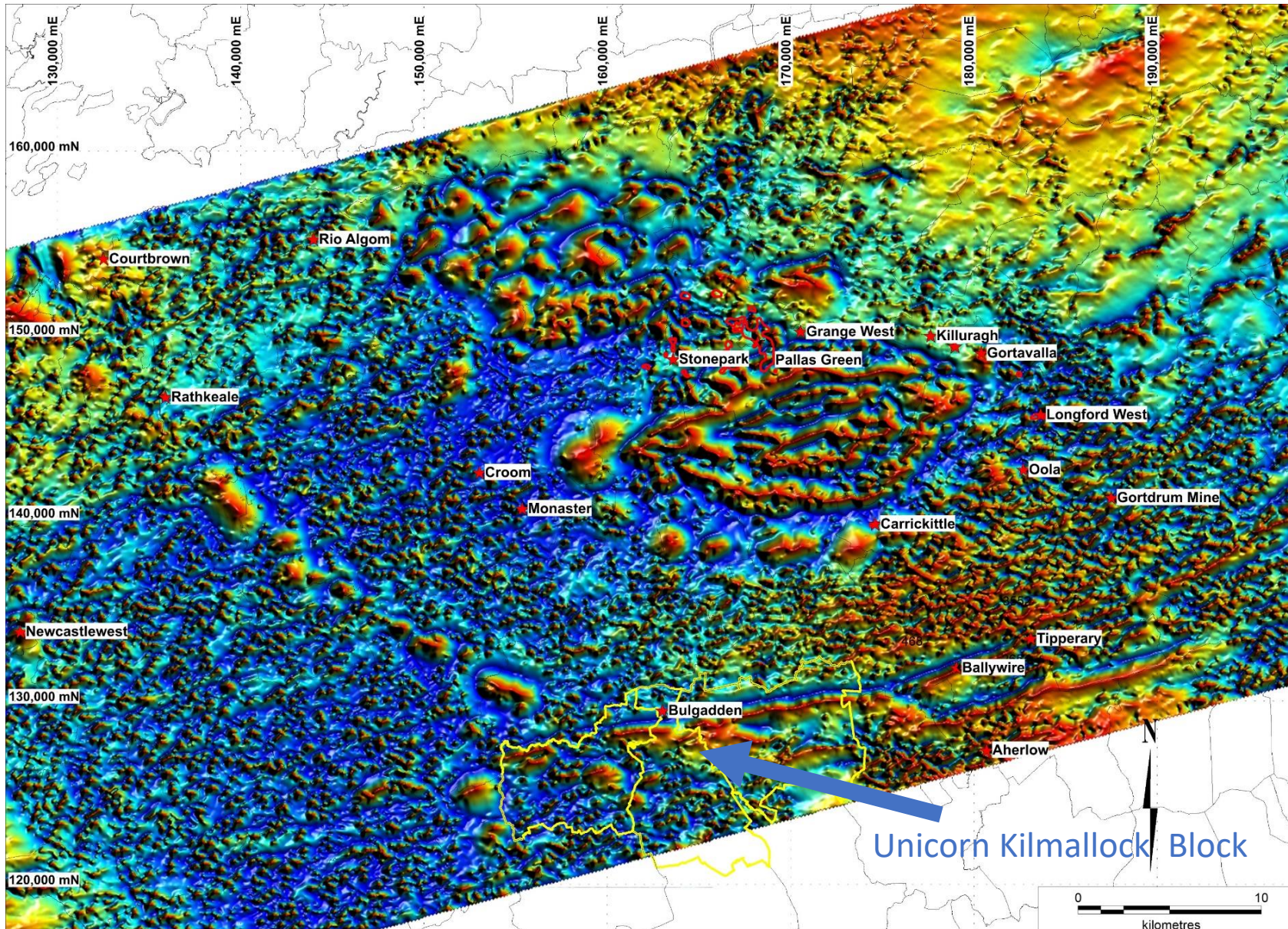
1. True thicknesses are interpreted as 70-95% of stated intervals.
2. Intervals use 1% zinc cut off value.





# Unicorn Mineral Resources

## Limerick – TELLUS Airborne Magnetics Results Oct 2019



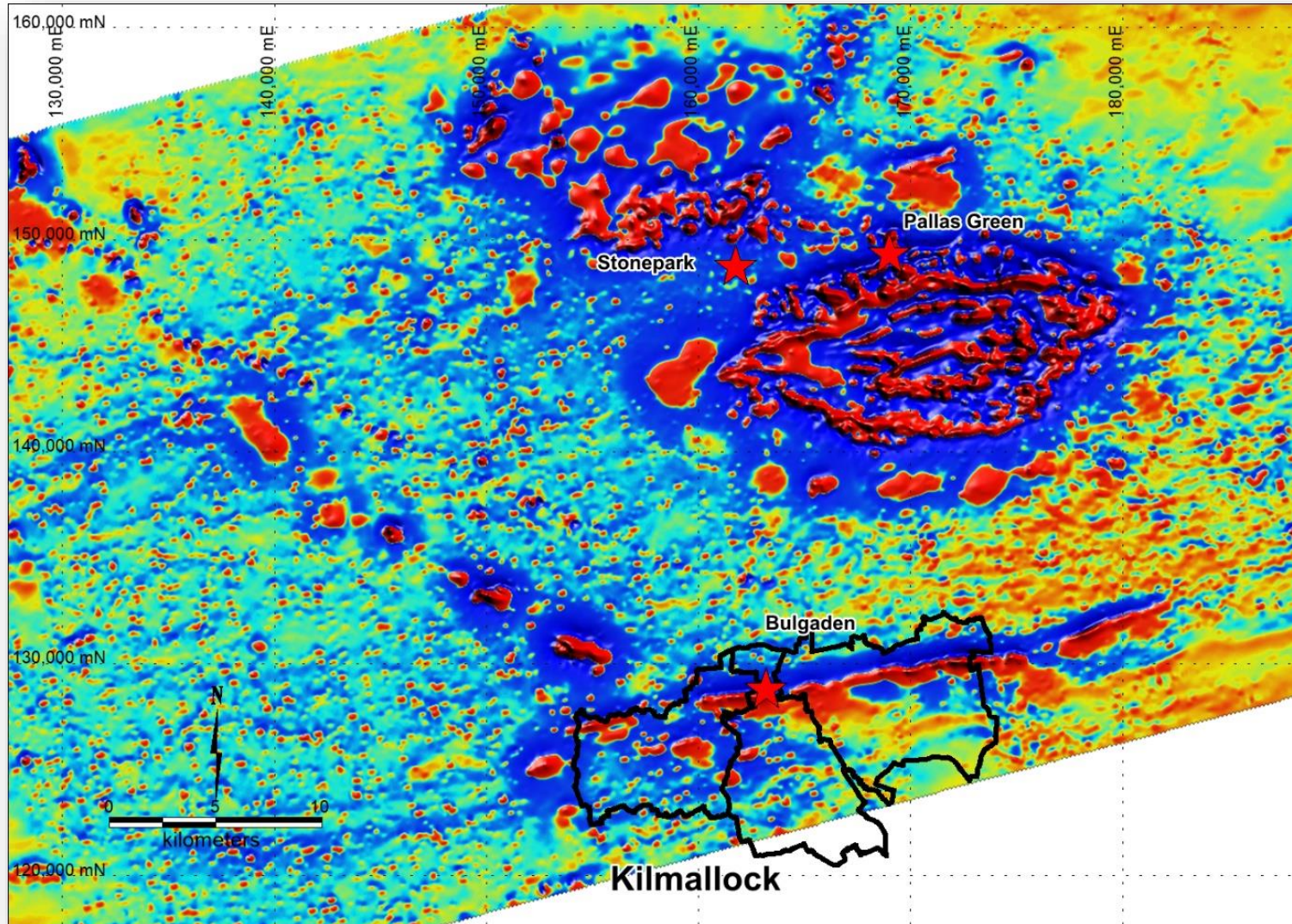
- ❖ Between 2018 and 2019, a 25,577 line-km Frequency Domane Electromagnetics, magnetics and gamma- ray spectrometer airborne survey was conducted over southwest Ireland.
- ❖ Part of the survey covered most of the three licences that comprise the Kilmallock Block
- ❖ The survey was flown by Sander Geophysics Ltd (SGL) from Ottawa, Canada, with a line spacing of 200 m, an altitude of 60 m, and a flight orientation of 165/345°.





# Unicorn Mineral Resources

## Kilmallock – TELLUS Airborne Magnetics



- ❖ **Highly-magnetic Knockroe Volcanic Formation, which are strike ENE-WSW across the north parts of the PLAs**
- ❖ **Sub-crop of this formation is offset by a series of NW-SE striking faults in the area to the south of the Bulgaden and Ballycullane mineralized zones**
- ❖ **Note the coincidence of main deposits with high magnetics – Knockroe Volcanics**
- ❖ **Note incidence of breaks (faulting / facies changes) along ENE- WSW trending high magnetic terminating at Bulgaden**



# Unicorn Mineral Resources

## Kilmallock Block – Summary

- ❖ From a regional geological perspective, the Kilmallock Block is located along the southwestern extension of the Rathdowney Trend
- ❖ The Kilmallock Block is located in the Limerick Province, where exciting discoveries have been made at **Pallas Green** (Glencore) and **Stonepark** (Group Eleven / Arkle) and **Carrickittle** and **Ballywire** (Group Eleven).
- ❖ There is extensive development of the main host lithology, the Waulsortian Reef, and the target depths are shallow (<300m). There is a strong northwest – southeast structural control, a characteristic of the Limerick province and analogous to Pallas Green, Stonepark and Carrickittle.
- ❖ There are currently two discrete zones of high grade sulphide mineralisation, Ballycullane (secondary - oxides) and Bulgaden (primary – sulphides). The directors believe there is excellent potential for additional zones of sulphide mineralisation.
- ❖ The directors believe, mineralisation in the Bulgaden Zone has excellent potential for extension and development. It is believed that the grades and thicknesses intersected to date compare favourably with Lisheen, Galmoy and Pallas Green.





# Unicorn Mineral Resources

## Corporate Overview

Highly experienced Board and Management – Strong Technical Base



### Directors

#### **Paddy Doherty – Chairman**

Mr Doherty is a founding partner, Chairman and Managing Director of the Electro Automation Group. The Group was founded in 1984 and has developed various interests in Design, Commissioning and Maintenance, which primarily include Car Parking Equipment, Automatic Gates and Doors, Security Equipment, Access Controls, Tolling and one off Design Projects. The Group has interests in Ireland, Northern Ireland, England and Germany.

#### **Richard O'Shea – CEO**

Over 25 years experience in Exploration Companies including CEO of AIM listed Ovoca Gold

#### **John O'Connor – CFO**

Over 25 years experience in Exploration Companies including CFO of AIM listed Ovoca Gold

#### **Dave Blaney P.Geo – COO**

34 Years experience in the exploration industry with a particular focus on the Irish Midlands Orefield. Discovered the Pallas Green deposit



# Unicorn Mineral Resources

## Kilmallock Block

Block	Three Contiguous Prospecting Licences, Surface Area <b>137.16 km<sup>2</sup></b>
Infrastructure	Well developed minor and regional class road network, south of the small town of Kilmallock. Land use is dominated by pasture land for grazing of sheep, cattle and horses.
Regional location	Located along the southwestern extension of the Rathdowney Mineralising Trend
Strategic Location	20km South of the Pallas Green Zn / Pb Deposit (Currently the largest undeveloped deposit in Ireland at 44Mt @ 8% Pb/Zn ) and 25km southwest from the Gortdrum Cu/Ag Deposit.
Target	Base of Waulsortian Reef - Carbonate Hosted, Zinc / Lead Massive Sulphides – relatively shallow.
Geological Setting	Southern side of the Limerick Basin in a region with an extensive, well developed, Waulsortian Reef host lithology. Structurally complex with a strong northwest-southeast and east-west grain, highly similar to Pallas Green. Well developed basal Waulsortian Reef breccias, essential ground preparation for carbonate hosted massive sulphide mineralisation. Geology is well constrained by historic, shallow stratigraphic drilling.
Significant Results	<p>Historic Stratigraphic Diamond Drilling has been used to develop a robust geological and structural model.</p> <p>Primary, base of Waulsortian Reef hosted, massive sulphide mineralisation was discovered by Boliden at Bulgaden. Best Results include:</p> <p><b>3249-14: 6.00m, grading 10.43% Zn / 1.78% Pb</b>  <b>3249-16: 12.00m, grading 4.29% Zn / 0.91% Pb</b>  <b>3249-18: 2.40m, grading 12.76% Zn / 2.0% Pb</b>  <b>3249-19: 5.30m, grading 9.55% Zn / 2.09% Pb and 6m grading 3.06% Zn / 0.9% Pb</b>  <b>3249-20: 3.8m, grading 14.66% Zn / 4.83% Pb</b>  <b>3249-24: 10.50m, grading 8.34% Zn / 1.52% Pb (including 1.2m grading 48.94% Zn / 7.23% Pb)</b>  <b>3249-25: 4.50m grading 16.53% Zn / 1.25% Pb</b></p> <p>Results from An Airborne Geophysical Survey (Magnetics, EM and Radiometrics) has been released in October 2019 and has enhanced the prospectivity of this licence area.</p>





# Unicorn Mineral Resources

## Lisheen Block

Block	Three contiguous Prospecting Licences, Surface Area <b>102.64km<sup>2</sup></b>
Infrastructure	Well developed minor and regional class road network, south of the small town of Kilcormick. Land use is dominated by pasture land for grazing of sheep, cattle with minor raised bog.
Regional location	Located along the world famous, highly prospective Rathdowney Mineralising Trend.
Strategic Location	Adjacent to the Lisheen and Galmoy Zn / Pb Deposits
Target	Base of Waulsortian Reef - Carbonate Hosted, Zinc / Lead Massive Sulphides
Geological Setting	Located along the Rathdowney Trend immediately north of the Lisheen and Galmoy deposits occupying a strategic location around both of these deposits. The licences are underlain by well developed and regional dolomitised Waulsortian Reef that dips gently to the south. The area is cross-cut by Caledonian faults orientated ENE-WSW and NW-SE. Extensions of the main controlling fault systems at both the Lisheen and Galmoy deposits can be traced onto these licences. Historic exploration was focused upon the immediate mine areas at both deposits. The directors' believe there is significant opportunity to explore for additional deposits in the 5 – 10Mt range and the imminent reopening of the Galmoy mine mean that there is potential to develop a mining centre being fed by numerous smaller deposits.
Significant Results	<p><b>Recent Mining has taken place immediately adjacent to these licences.</b></p> <p><b>Lisheen : 16.7Mt @ 14.1Zn / 2.4Pb - Located immediately to the south of the Block</b></p> <p><b>Galmoy : 8.96Mt @ 12.7Zn / 1.8Pb - Located immediately to the east of the Block</b></p> <p><b>Barna Lisheen – significant mineral occurrence located on the licence Block c.1km northwest of the Lisheen Main Zone Lens. The directors' believe that the base of Reef breccia hosts massive sulphides dominated by sphalerite and galena – highly prospective and undeveloped. They also believe that the presence of Barna Lisheen supports the potential for other satellite deposits across this belt. Drill hole No. 20 had an intersection of 7.30m @ 7.38% Zn / 0.18%Pb Inc. 2.1mtr @ 13% Zn</b></p> <p>Hence, early stage evaluation must be completed ASAP to develop an exploration strategy for the block</p>



# Unicorn Mineral Resources

## Supporting Information

<https://www.groupelevenresources.com/news/>

<https://adventusmining.com/news/122537>

<http://unicornmineralresources.com/>

<http://www.kitcometals.com/>

<https://www.gsi.ie/en-ie/data-and-maps/Pages/default.aspx>





# Unicorn Mineral Resources

## Contacts

Corporate Contact

Richard O Shea CEO

Email : [ros@eircom.net](mailto:ros@eircom.net)

Mobile : +353 87 2560397

Technical Contact

Dave Blaney Geologist COO

Email : [blaneyd@brg.ie](mailto:blaneyd@brg.ie)

Mobile : +353 87 2796487

<http://unicornmineralresources.com/>